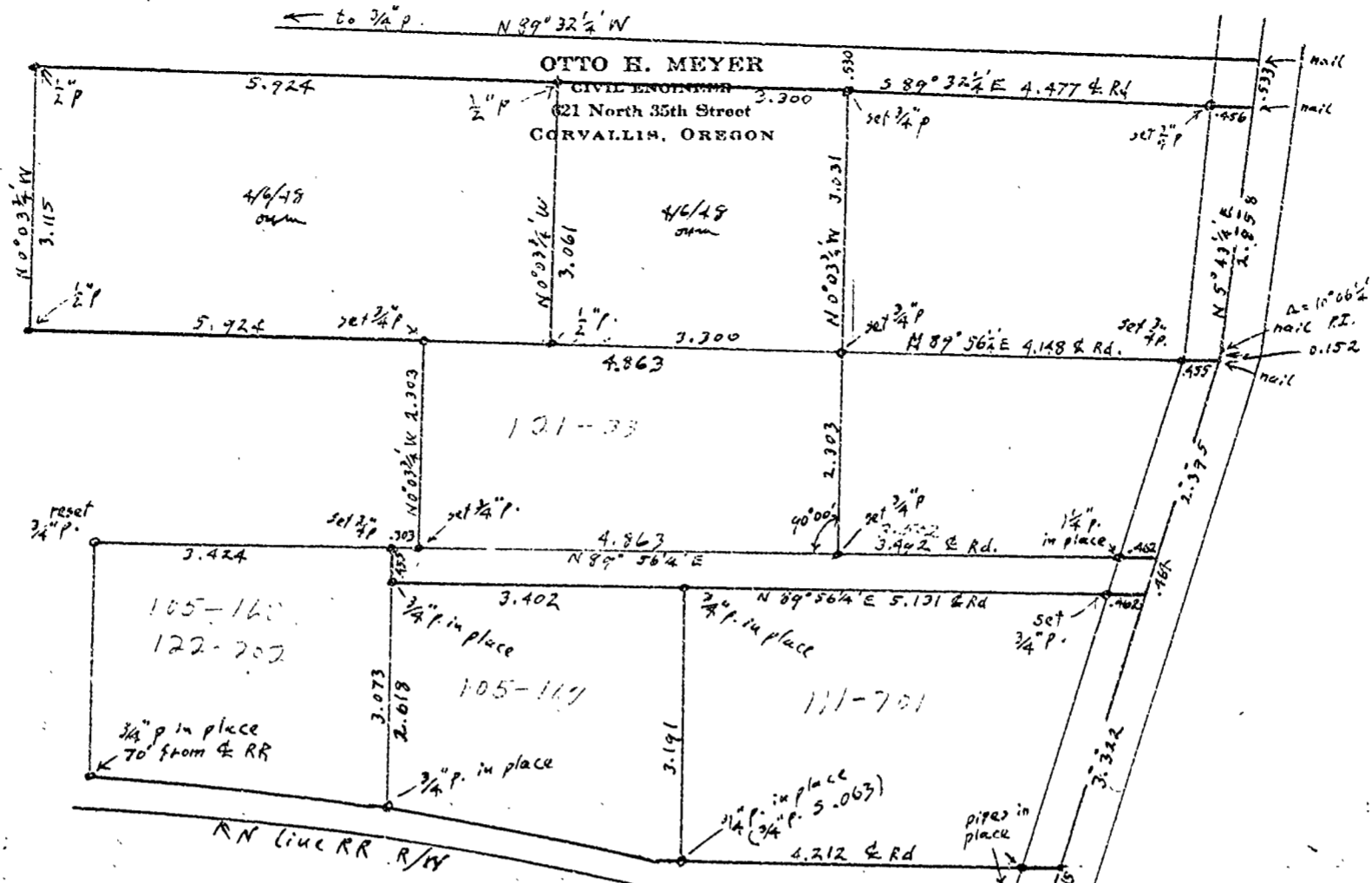


C.S. 277



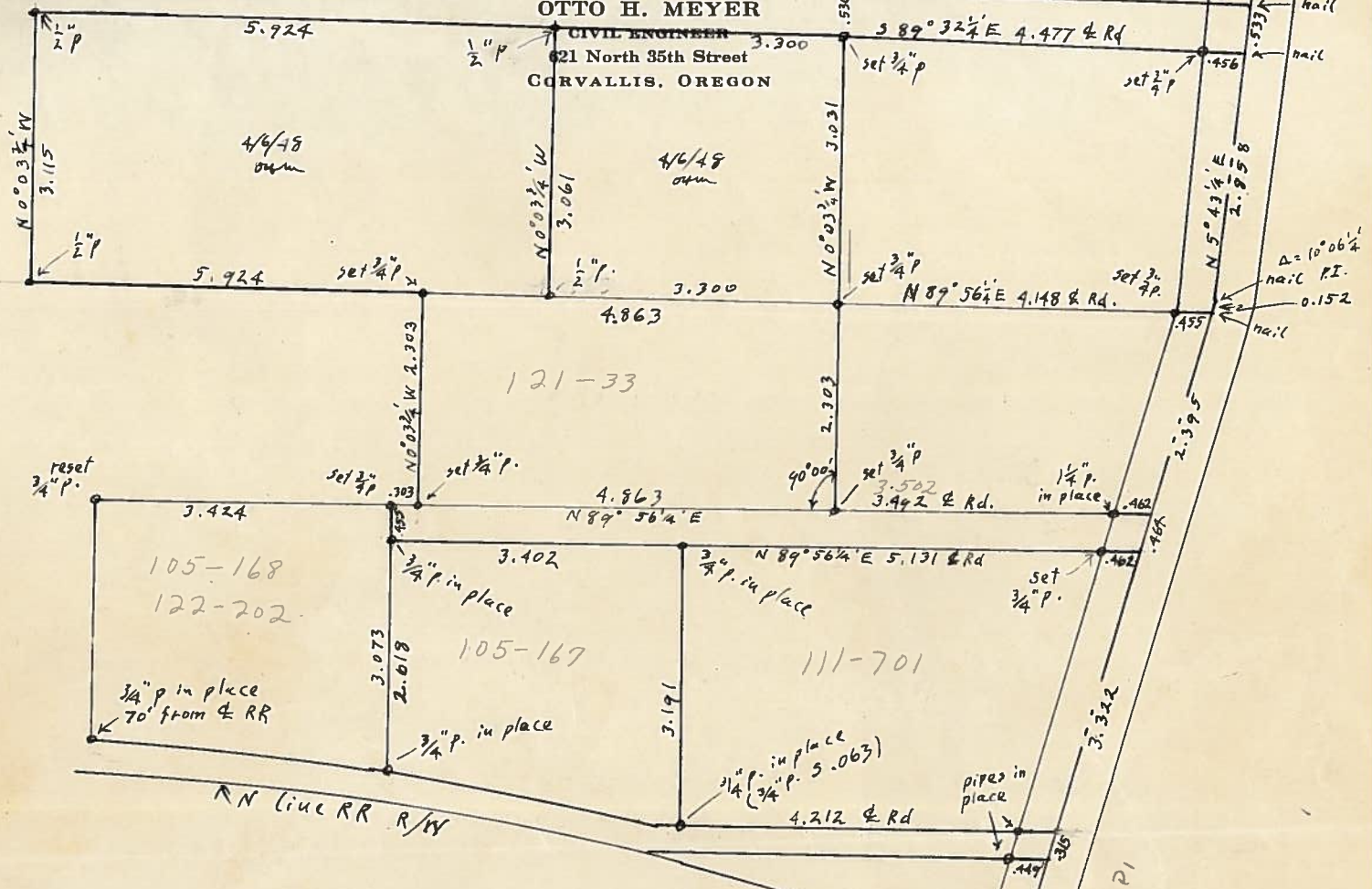
1964

Nail, 7.72 ch. S 89° 55' W
from S.E. corner J. Quinn Thornton
D.L.C. 37, T 10413, R 344 W.

C.S. 277 GALLOWAY

to 3/4" p. N 89° 32 1/2' W

OTTO H. MEYER
CIVIL ENGINEER
621 North 35th Street
CORVALLIS, OREGON



1" = 2 ch.
Nov. 12, 1947



11-3-6

1964

↑ nail, 7.72 ch. S 89° 55' W
from S.E. corner J. Quinn Thornton
D.L.C. 37, T 10 & 11 S, R 3 & 4 W.