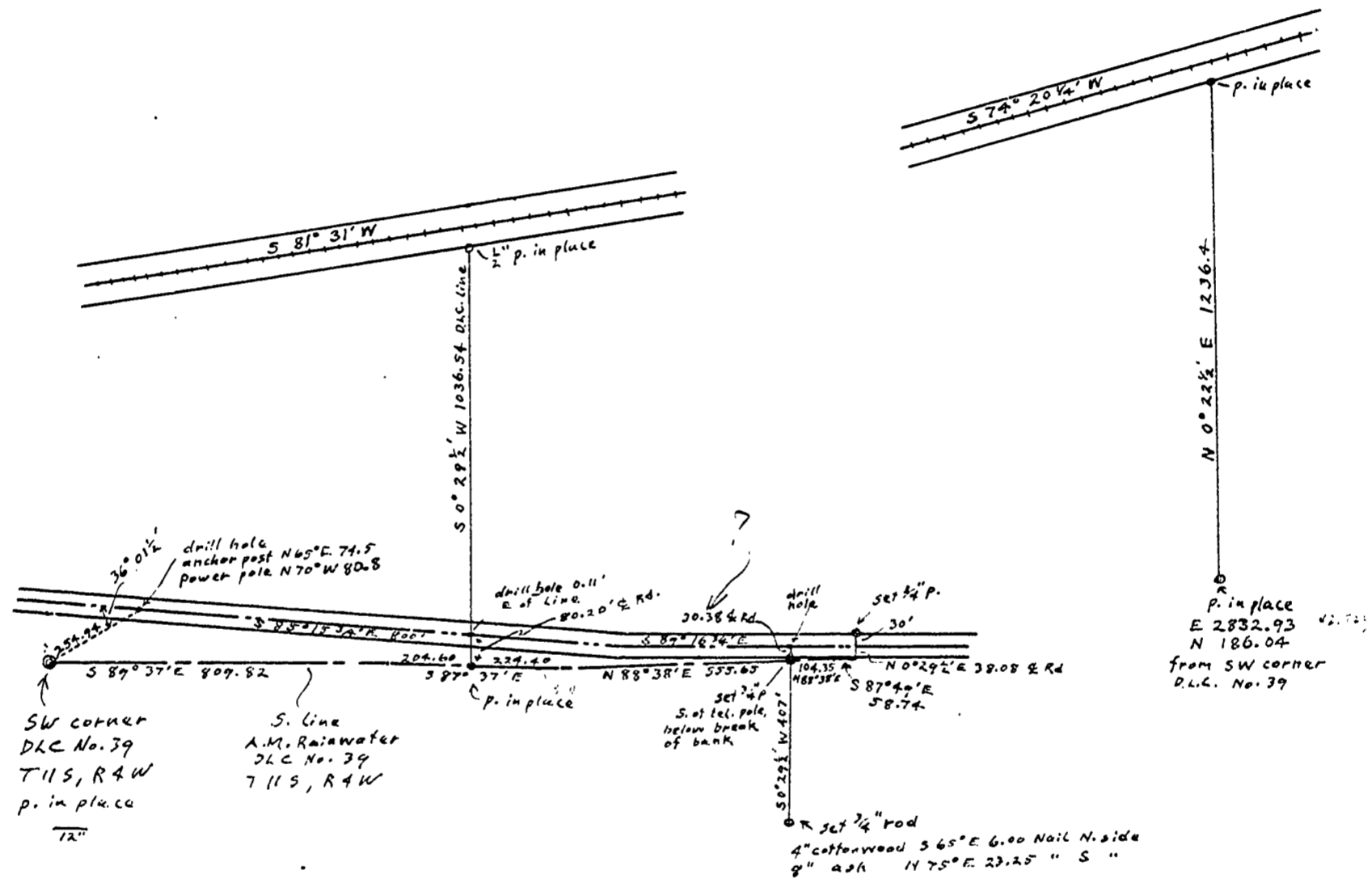


OTTO H. MEYER  
 CIVIL ENGINEER  
 621 North 35th Street  
 CORVALLIS, OREGON

Aug. 11, 1948

2040



1" = 400'

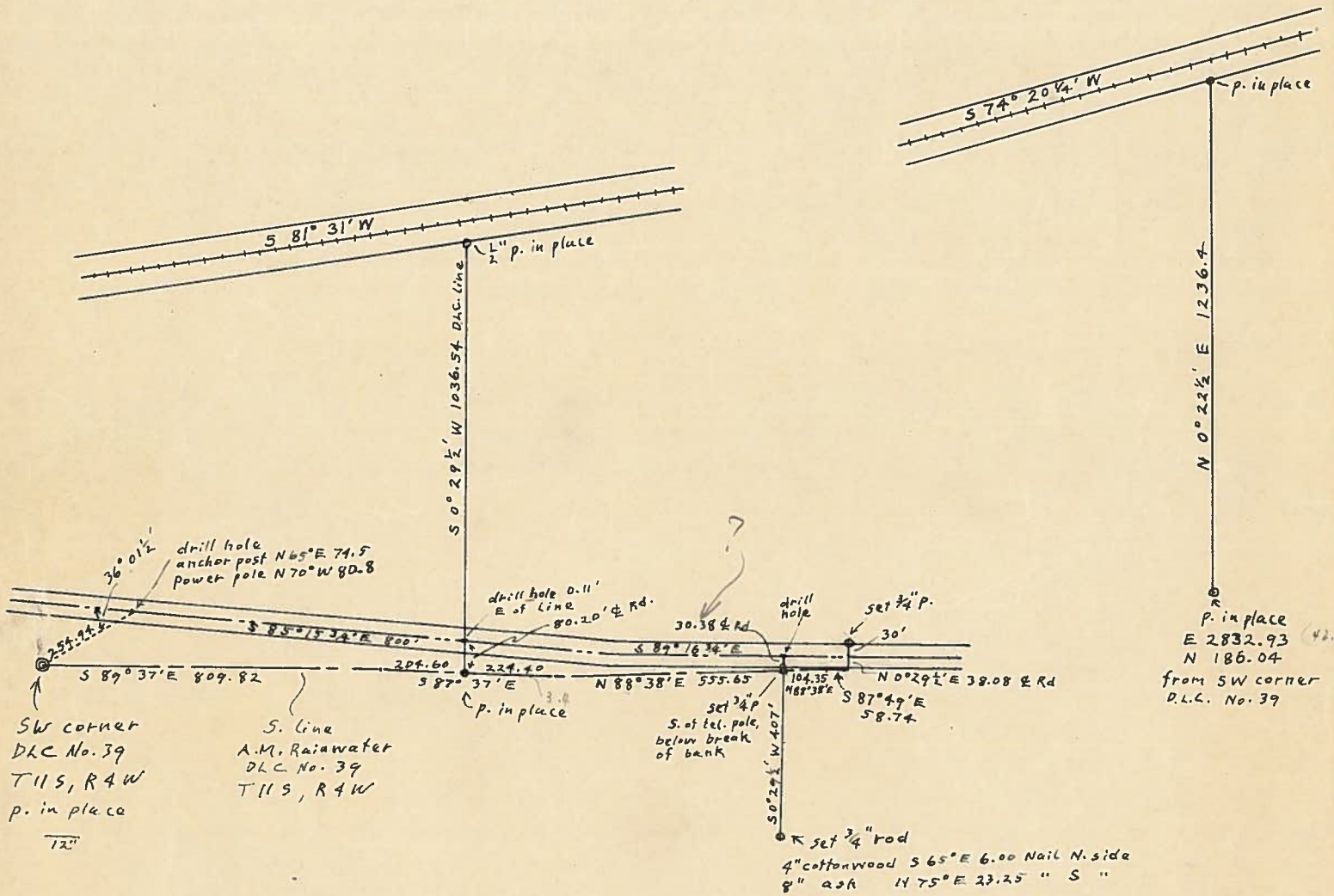
100.35 = 1.32



OTTO H. MEYER  
 CIVIL ENGINEER  
 621 North 35th Street  
 CORVALLIS, OREGON

Aug. 11, 1948

2040



1" = 400'

104.35 = 1.58

