

C.S. # 2052

Hardcopy 10-4#8

also see notes in file

F.B. 91-59

Book 91
10-4

THE UNIVERSITY OF CHICAGO

LIBRARY

PHYSICS

No. 2000

2052 County Survey 205
 Beg. at 1 1/4" pipe on S. line of
 Drury R. Hodges Cl. 48 T11-4
 N. 24° 48' W - 153' 400'
 - 1° 20' 400.0'
 - 1° 30' 400.0'
 - 2° 400.0'
 - 1° 15' 400.0'
 339.2

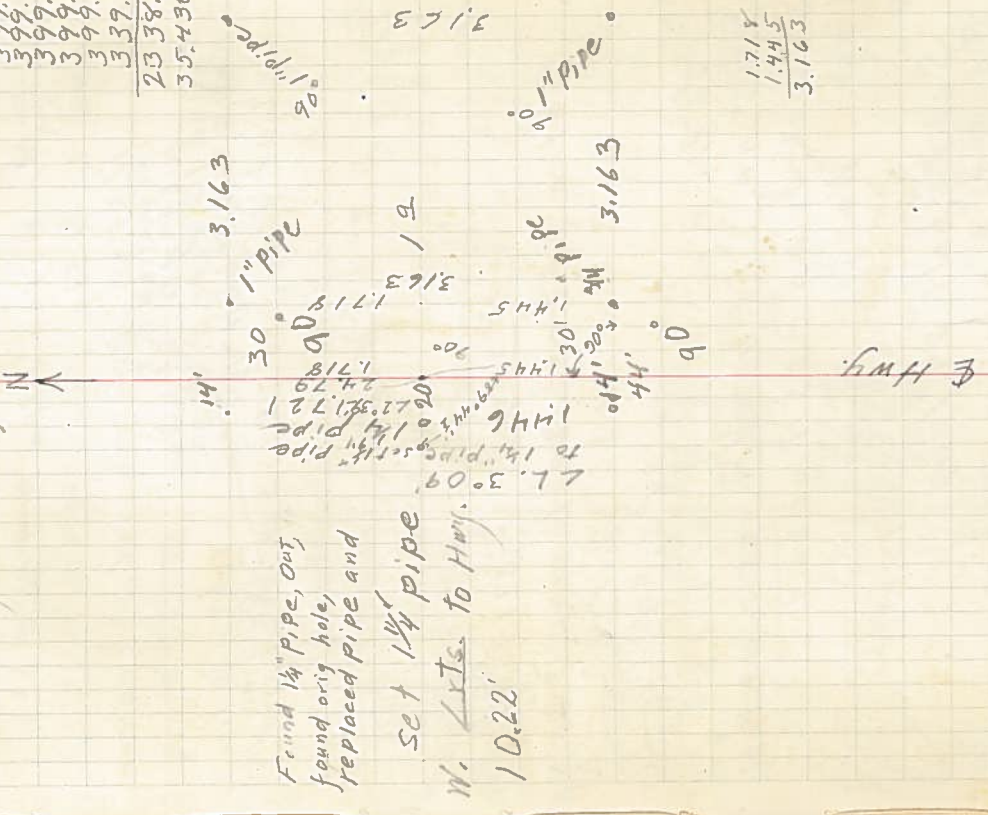
To a point ~~1 1/4~~ ^{now} to 1 1/4" pipe, 19.5' & 30'
 Wiggled in from Pt. at School to P.S.

30' - 5/8" I. rod

Oct. 19, 1948

For Donald Reynolds
 on Chas. M. Benedict's
 in Drury R. Hodges Cl. 48

399.78
 399.89
 399.86
 399.76
 399.90
 339.20
 2338.39
 35.430



Found 1 1/4" pipe, out,
 found orig. hole,
 replaced pipe and
 set 1 1/4" pipe
 W. Lts. to Hwy.
 10.22'

1.718
 1.445
 3.163