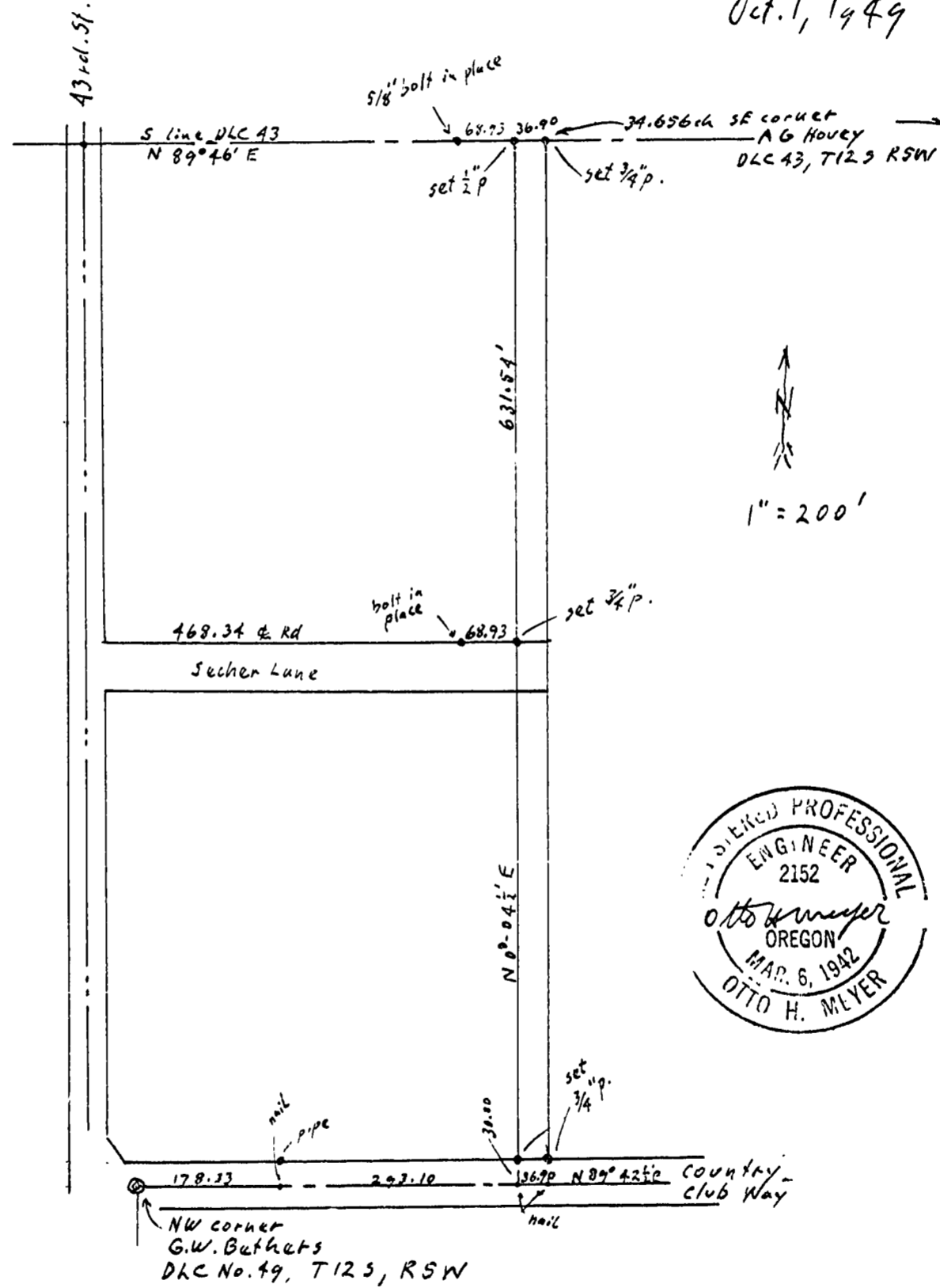


OTTO H. MEYER
CIVIL ENGINEER
621 North 35th Street
CORVALLIS, OREGON

2140

Oct. 1, 1949



OTTO H. MEYER
 CIVIL ENGINEER
 621 North 85th Street
 CORVALLIS, OREGON

2140

Oct. 1, 1949

43rd St.

S line DLC 43
 N 89° 46' E

5/8" bolt in place

set 1/2" p.

set 3/4" p.

34.656 ch SE corner
 AG HOVEY
 DLC 43, T125 RSW

631.64'



1" = 200'

468.34 @ Rd

bolt in place

set 3/4" p.

Secher Lane

N 0° 04' E



nailed pipe

178.33

293.10

30.00

set 1/2" p.

136.70

N 89° 42' E

Country Club Way

NW corner
 G.W. Bethets
 DLC No. 49, T125, RSW