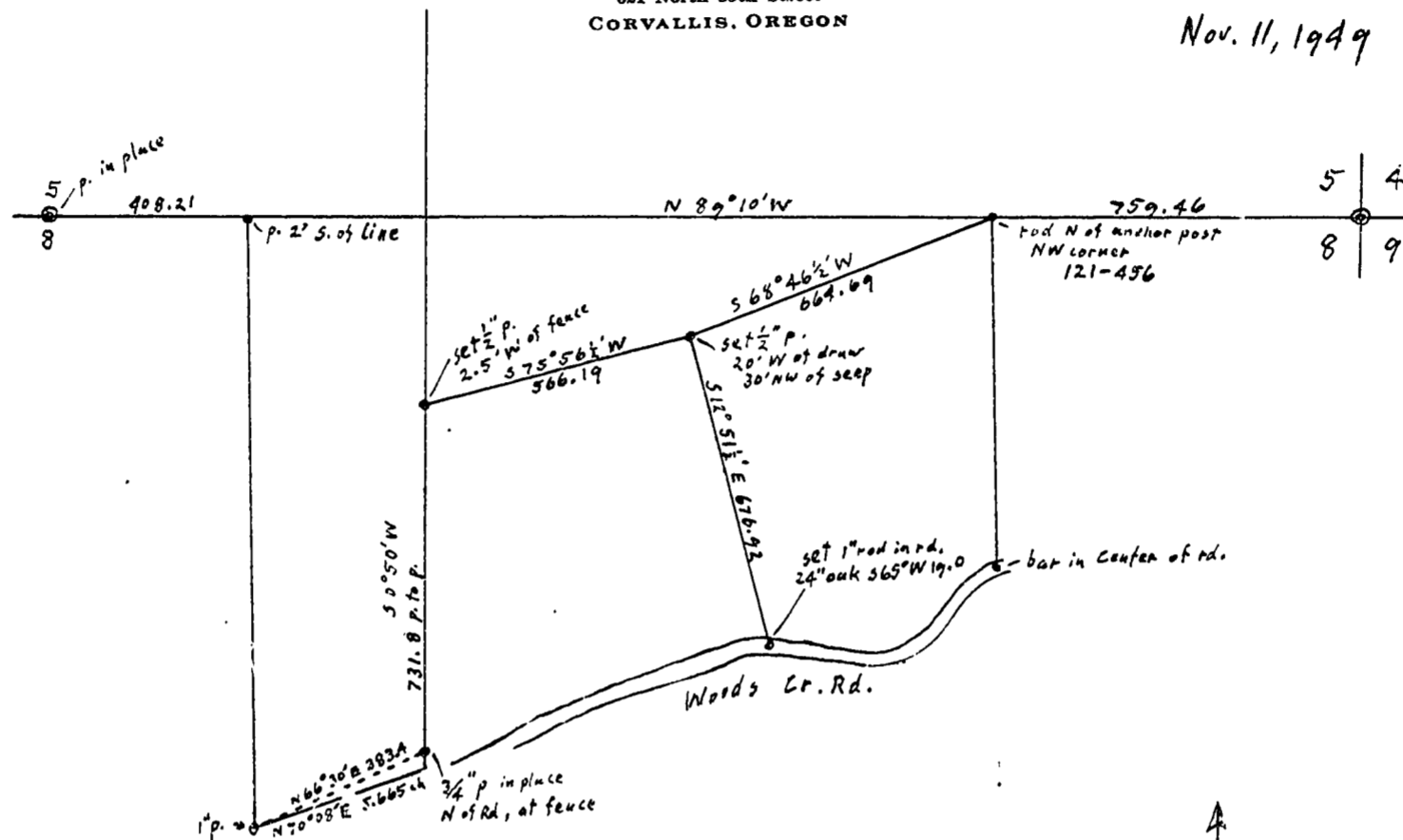


OTTO H. MEYER
 CIVIL ENGINEER
 821 North 35th Street
 CORVALLIS, OREGON

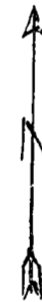
2148

Nov. 11, 1949



Sec. 8, T12S, R6W

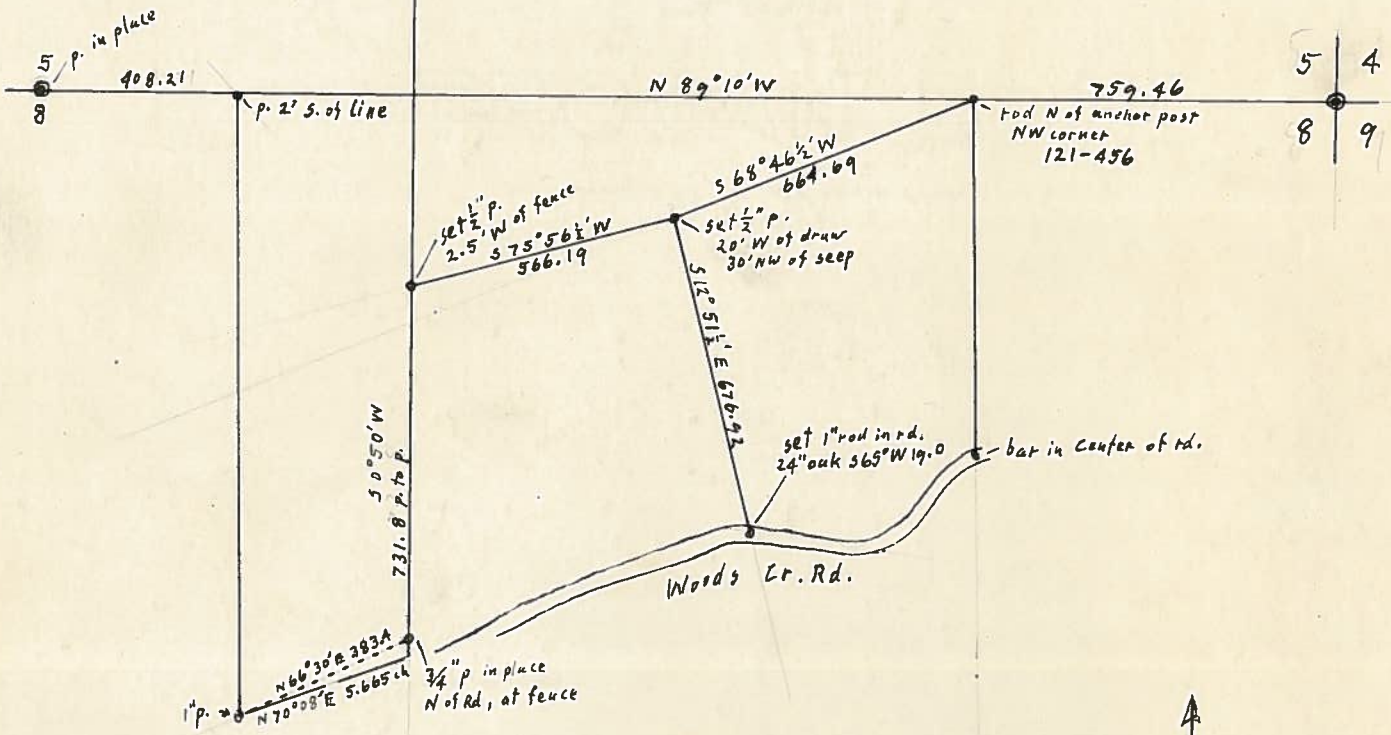
400' = 1"



OTTO H. MEYER
 CIVIL ENGINEER
 621 North 35th Street
 CORVALLIS, OREGON

2148

Nov. 11, 1949



Sec. 8, T12S, R6W
 400' = 1"

