

C.S. # 2248

see notes in file

F.B.

C1 69-12-6

C.S. # 278

2-9-51  
Beyersheim A  
Frank

For Claude Schaefer

2248

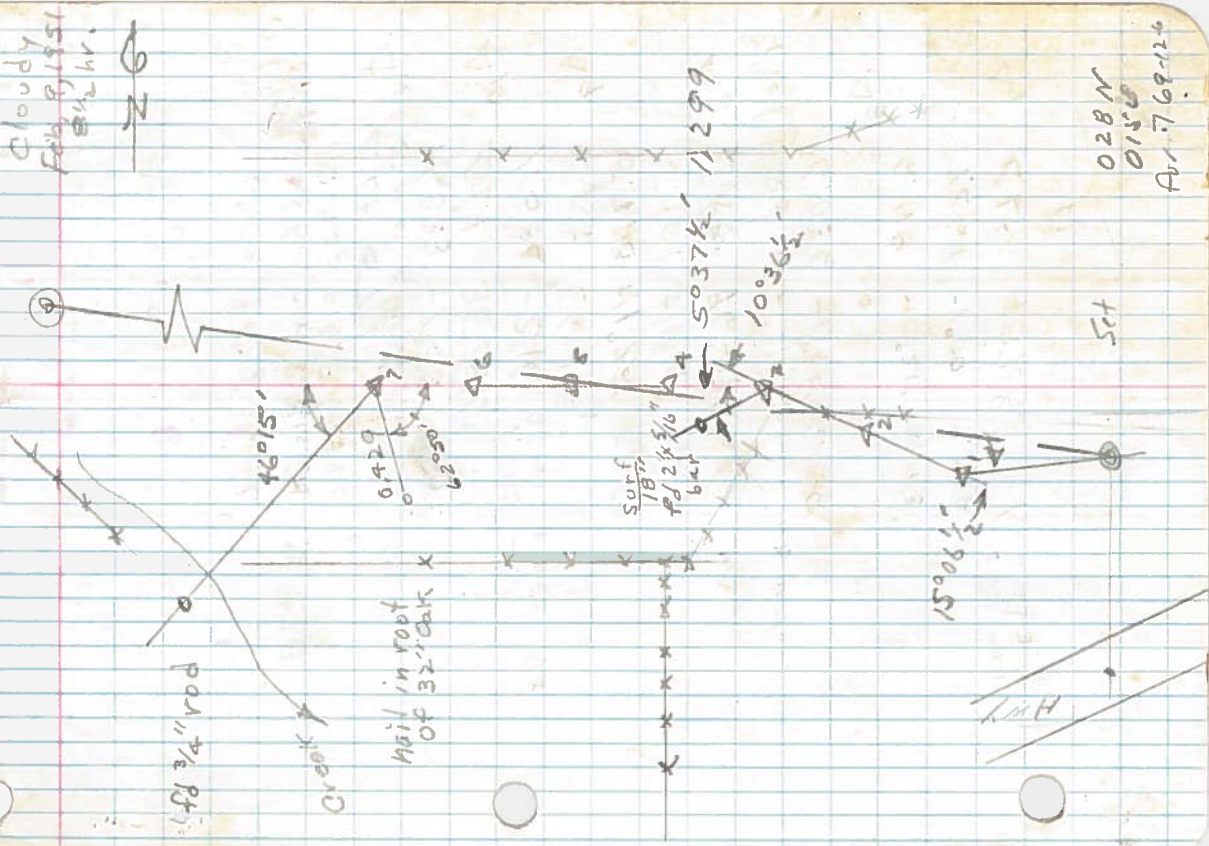
LINE DATE PARTY

PROJECT *shaker*

KILHAM FORM P-172

180055

15.7.68	18 3/4" rod	CRD.	2,353	-	2,353
A7	LLH	46°15'			2,923
	(16' in root of 32 oak fence)				
	0.429				
A7	LLH	62°50'			0.347
	0.347				0.347
A6					
	7,252	+1°49'			7,248
A5					
	15' N. of Newspaper box				
	5,888	+3°15'			5,878
A4					
	fine S. (N. of garage)				
	6,759	+1°27'			6,757
A3					
	40d spike	10°36'			
	4,201	-8°30'			4,155
A2					
	2,102	+2°50'			2,099
A1					
	CRD.	44°56'			15°06 1/2'
	7,189	-7°12'			7,132
	2,545	+6°19'			2,530
	Temp	74	69-12.6		



6.6  
6.4  
1.19

Cloudy  
Feb. 8.1911  
8 1/2 hr.

028N  
0150  
Apr. 7.69.12.6

LINE DATE

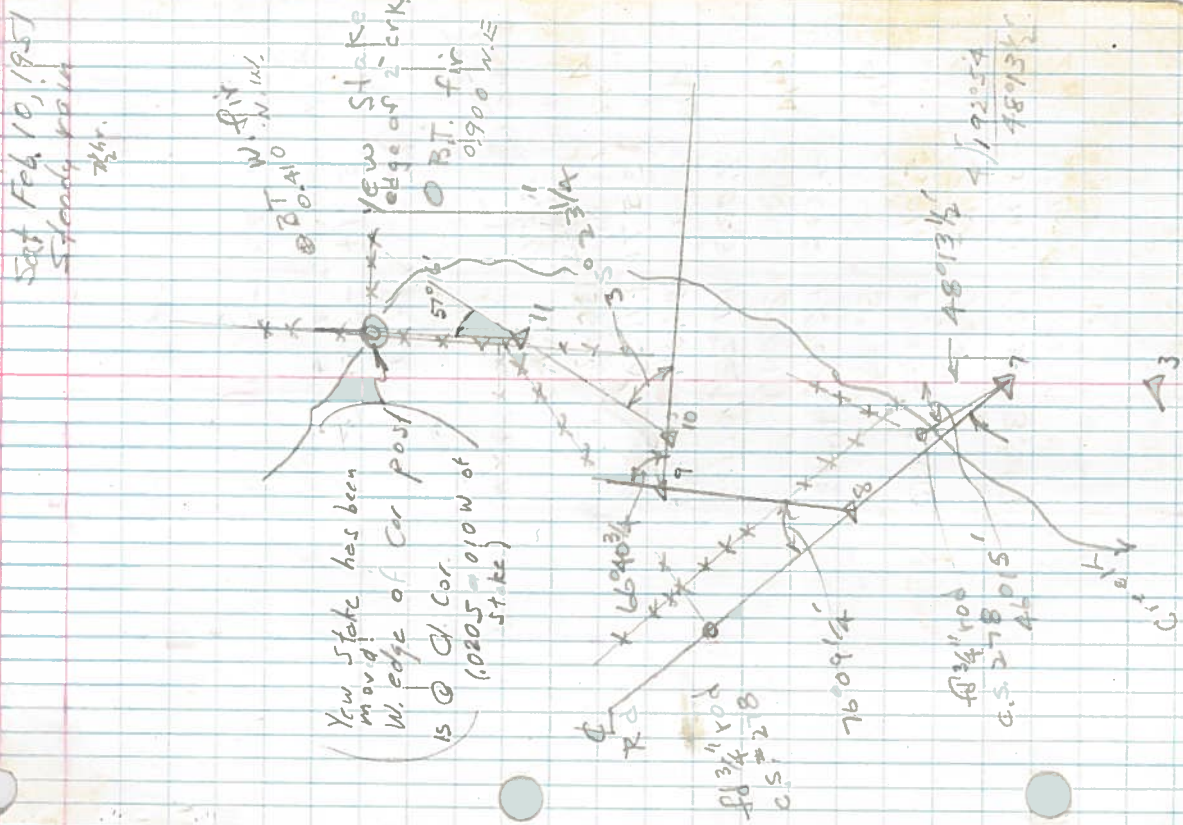
PARTY

PROJECT  
Shafer

KILHAM FORM P-172

180095

Old Yew Stake	at fac. cor 2 B.Ts. SH	C.S. 278			
	0.933	-16°50'	0.893		
Δ <sub>11</sub>	← LT	57°16'			
	2-N of E-W fac.				
	4.333	-7°55'	4.292		
A <sub>10</sub>	← LT	35°23 1/4'			
	1.586	-2°16'	1.585		ridge NE
Δ <sub>9</sub>	← RT	66°40 3/4'			
	5.773	+11°28'	5.658		
	5.401	+10°14'	5.315		
Δ <sub>8</sub>	← RT	76°09 1/4'			from Δ <sub>7</sub>
	3/4" rod of Rd. N. wheel track in line with fac.				
	6.036	-0°18'	6.036		
Δ <sub>8</sub>	6.113	-0°21'	6.113		
	7.269	-1°00'	7.268		
Δ <sub>7</sub>	← LT	48°13 1/2'			to 3/4" rod from Δ <sub>3</sub>





LINE DATE \_\_\_\_\_ PARTY \_\_\_\_\_

PROJECT Shafter

KILBAM FORM P-172

180055

Δ26A approx 4 gravel out  
3,433 - 0°29' 3,433

Δ26  
0,233 - 0,233

Δ nail in fork of plane tree  
5,166 - 5°37' 5,138

Δ24

7,290 - 15°06' 7 38  
Δ23  
1.55' fir curve in groove  
∠ Rt 40°15' 34" Nag  
Ver. 19°15'

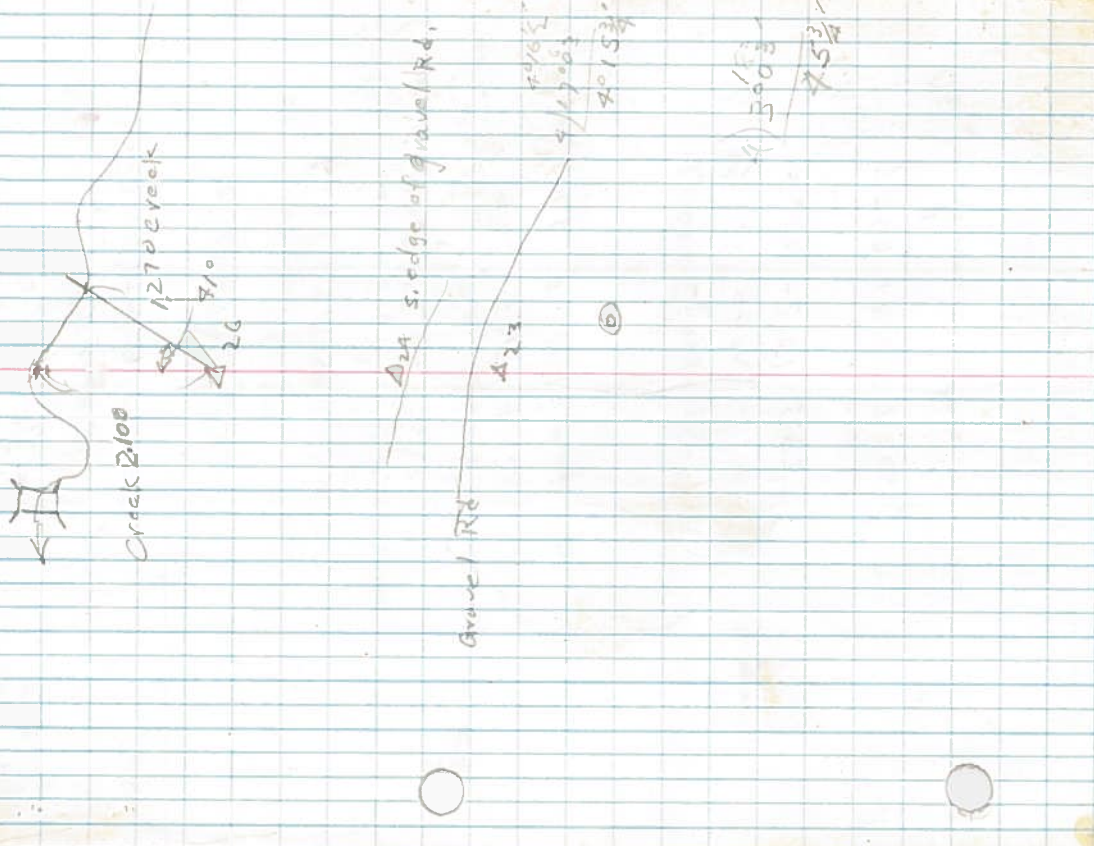
3/4" rod (6)  
4,325 - 13°25' 4,207  
- Knotton D.L.C. # 1047 16" fir N53 10 W  
1,370 - 13°07' 1,334

Δ22  
6 Lt. 2020'  
3,139 - 5°00' 3,127

Δ21  
∠ Rt 0°45' 3/4" (44 1/4")  
6" SW of 4" oak  
1,190 - 12°18' 1,163

Δ20  
nail in notch W. side 18" fir 3' above gch.  
1,475 - 16°20' 1,415

Δ19



LINE DATE \_\_\_\_\_ PARTY \_\_\_\_\_

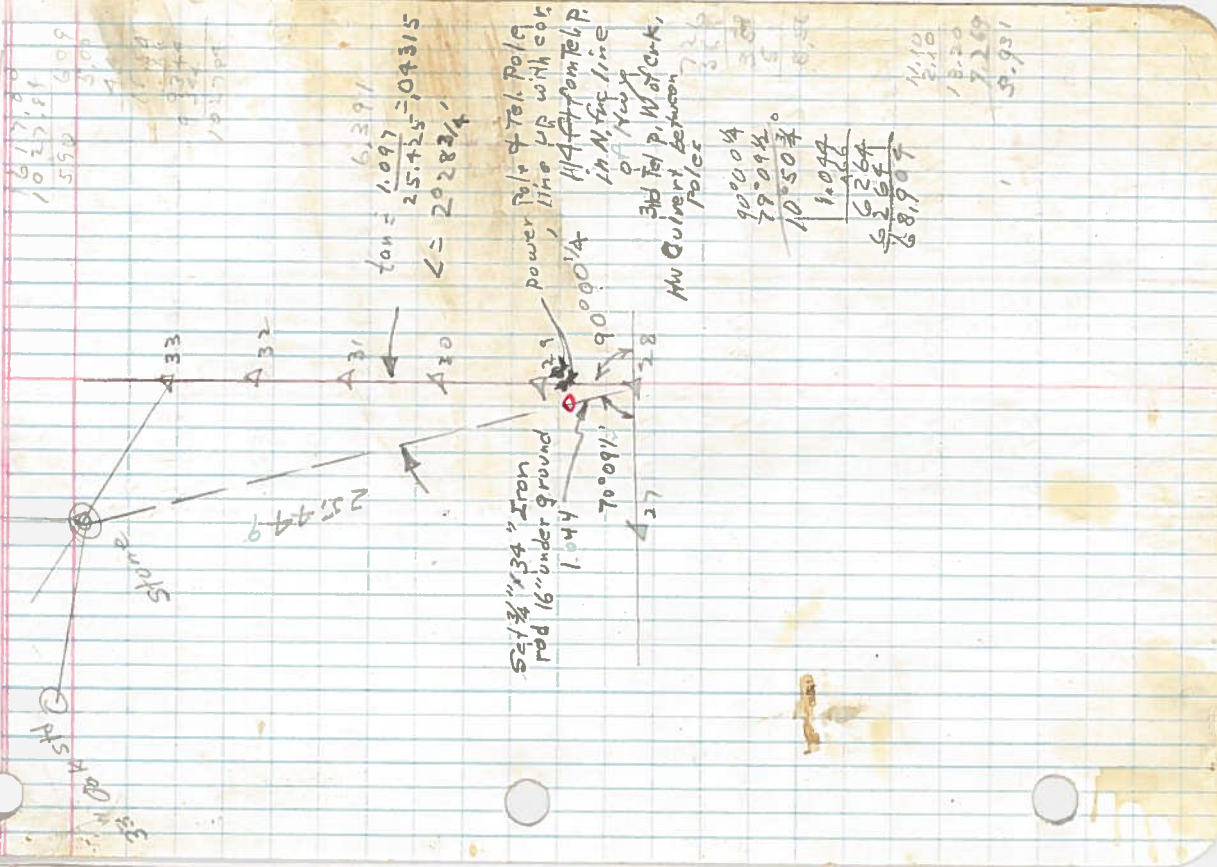
PROJECT Shaler

KILHAM FORM P-172

Stone	54028'	Oak stump 20"	560
	21°56'	Oak 570	570000
	1.286		44'-E
Δ <sub>33</sub>	(84.90)	-5°47'	1.097 Lt
	59004		.657 Md
Δ <sub>32</sub>	(3.474)		
	(225.34)	+4°39'	3.403
Δ <sub>31</sub>	5.869		
	(387.36)	+3°56'	5.855
Δ <sub>30</sub>	edge of plank rd.		
	6091	+1°35'	6.089
Δ <sub>29</sub>	0.403 W of creek S.E.		10 Ks.
	5.005	-2°12'	5.001
Δ <sub>28</sub>	0.38 Ks N. of power pole		
	4.423	-2°17'	4.420
Δ <sub>27</sub>	1/2 Lt.	90°00'	from Δ <sub>23</sub>
	3.554	-2°28'	3.551
Δ <sub>26</sub>	1/2 Lt	90°00'	
	5.940	-2°51'	5.933
Δ <sub>25</sub>			
	7.269	+0°29'	7.269
Δ <sub>24</sub>	0.233	from plum tree	

300  
68.9  
431.4

20" Oak Stump  
225.34  
24.50  
66  
147.00



tan = 1.097  
25.425 = 109315  
∠ = 20282.4

power pole 4 Tel. poles  
line up with cot  
114 ft from Tel. P.  
in N. E. line  
of Hwy  
3rd Tel. P. W. of cut,  
NW Culvert between  
poles

90°00'4  
79°09'0  
10°50'4  
1.097  
62.64  
681.907

14.10  
18.20  
72.80  
59.951





LINE DATE PARTY

PROJECT

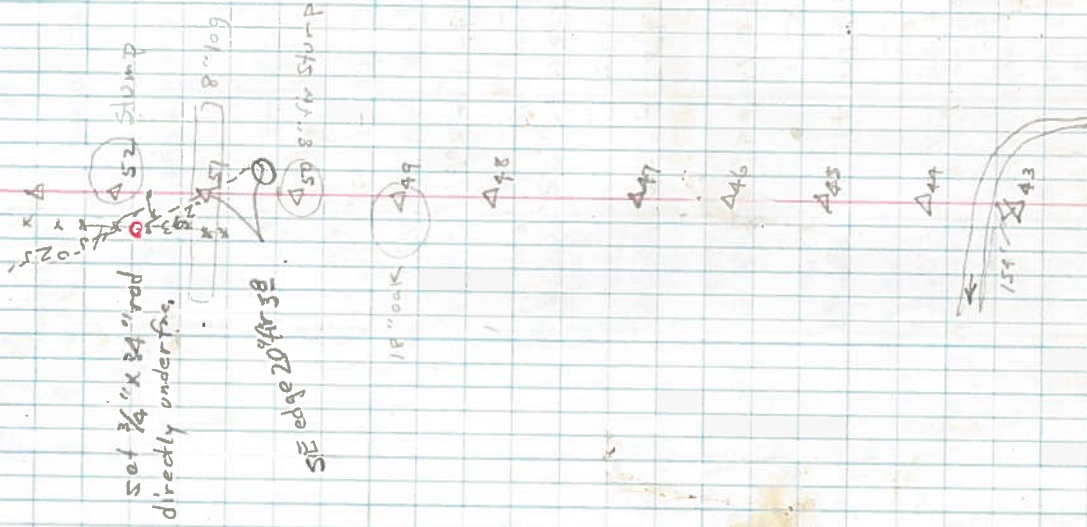
Shafer

KILHAM FORM P-177

161302

Δ53	70.79	+2°24'	70.73	(1,072)
Δ52	nail on 30" stump		90.85	(1,277)
Δ51	nail on 8" log			
Δ50	256.58 nail top	+4°55'	255.64	(9,713)
	24.52	+13°38'	23.83	(21)
Δ49	sight nail in undercut S. side		198.75	(3,011)
			-0°20'	198.75
Δ48	top of knoll		84.05	(257)
		+9°16'	82.95	
Δ47	in field		248.47	(2,764)
		+2°19'	248.27	
Δ46	nail on leaning tree edge of field		225.45	(2,401)
		+5°23'	224.46	
Δ45	nail on tree		21.18	(2,200)
		+10°12'	20.86	
Δ44	across river		152.92	(3,217)
		+7°01'	151.77	
Δ43			212.34	(2,119)
		-0°19'	212.34	

627 Crk loc v



1293  
17256  
17558  
19338

324  
304  
245

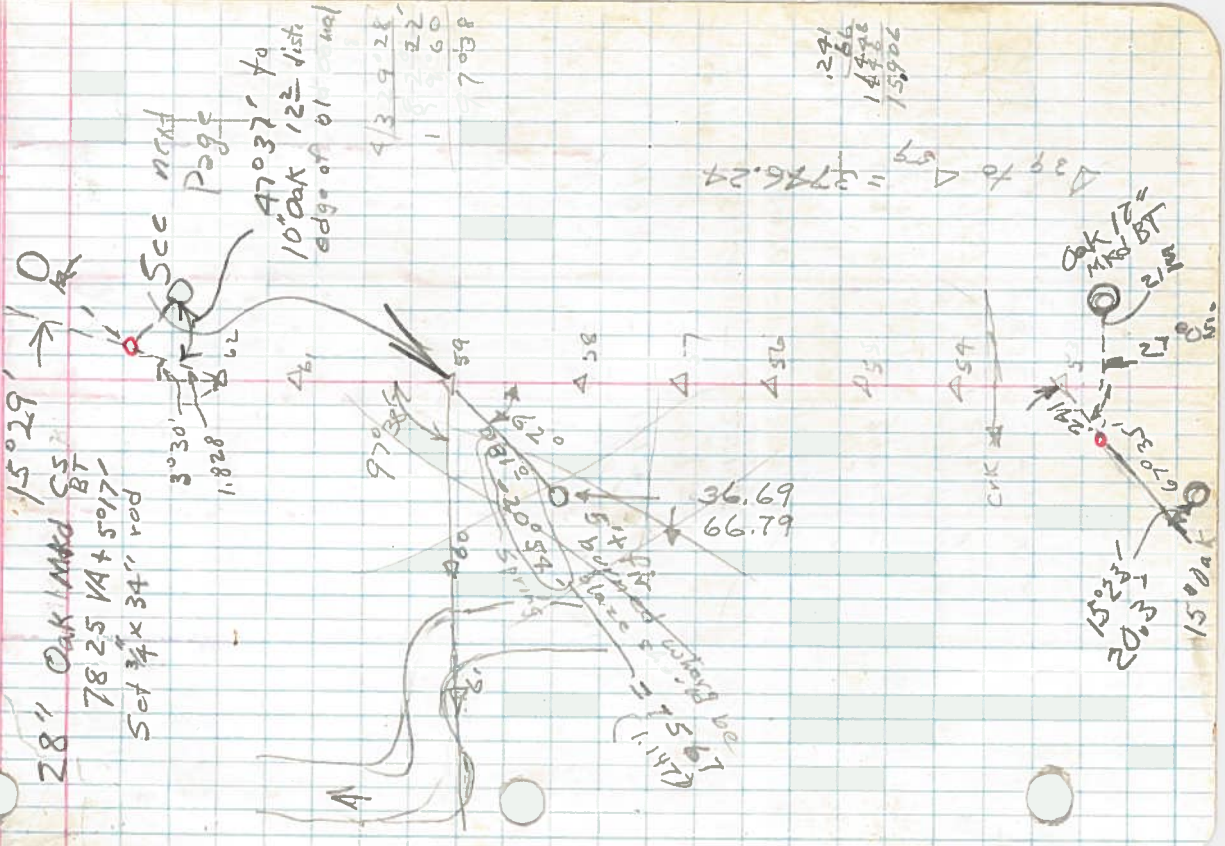
32892  
222  
15272

LINE DATE \_\_\_\_\_ PARTY \_\_\_\_\_

PROJECT Shaler

Station	Description	Coordinates	Notes
Δ63	1/4" Lt stump rottd to ground 18" I	-8°55' 139.8	(WIP)
Δ62	1st Lt bark fac.	23°58' 5 to E	Δ62 to stump (4228) ✓
Δ61	5-33 S of rail in 10" Willow leaning E	282.02 + 2040'	287.68 ✓
Δ60	382.47	-16°42'	366.34 ✓
Δ59	1st Lt W to N	82°22'	
Δ58	309.44	-3°32'	308.85 (4650)
Δ57	SPUR N 1/2" N 46' E of 20' Oak	67.26 + 5°52'	66.91 (1014)
Δ56	across draw N	159.82 - 6°20'	158.85 (4407)
Δ55	58.79	+ 4°30'	58.61 (688)
Δ54	89.10	+ 12°41'	86.93 (1317)
Δ53	112.06	- 9°10'	110.63 (1076)
	85° east - 160' W side of Crk N		
	1 1/2" W of N-S line		

183.30  
176.30  
7811 10968  
120,648



Δ39 to Δ59 = 3776.24  
1291  
1486  
15906

47°37' to  
10' Oak 123' dist  
edge of 01' wall

5cc  
Page

3°30'  
1.828

15°29'  
28" Oak Mark CS  
78.25 VA + 5017  
Set 3/4" x 34" rod

145  
15

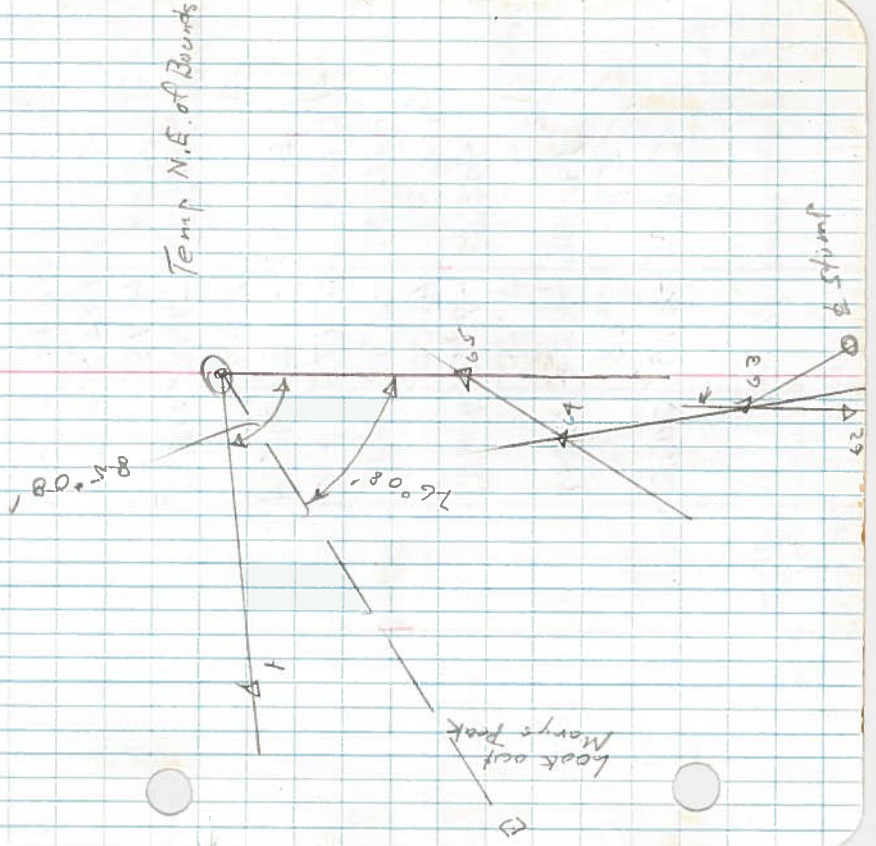


LINE DATE PARTY

PROJECT

KILHAM FORM P-172

180055



LINE DATE PARTY

PROJECT Shafer

KILHAM FORM P-172

180055

S line of T&C # 67 from stone  
27,712 chains E of SW Cor. C167  
W. to N-S Traverse line

this point is 1st point S. of rifk bdl.  
in main traverse = Δ 62

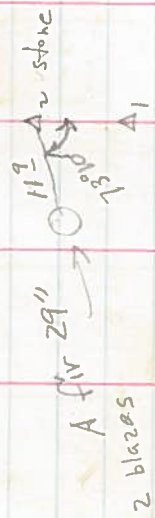
Δ <sub>7</sub> Int	98°19'	E to S	
Δ <sub>6</sub> Lt	10°57'	408.62	
Δ <sub>5</sub> Lt	14°15'		
Δ <sub>5</sub> Lt	-7°06'	315.85	
Δ <sub>5</sub> Lt	2°27'		
Δ <sub>4</sub> Lt	-14°38'	245.34	
Δ <sub>4</sub> Lt	5°47'		
Δ <sub>3</sub> Lt	-5°00'	113.15	
Δ <sub>3</sub> Rt	10°00'		
Stone Δ <sub>2</sub> Lt	-9°42'	409.69	
Stone Δ <sub>2</sub> Lt	5°55'		
Stone Δ <sub>2</sub> Lt	-10°55'	139.49	
Δ <sub>1</sub> Lt	4°33'		
Stone/Cross Δ <sub>1</sub> Lt	-2°15'	206.20	

Alder s/d green  
Willow gone 8" shoot  
from trying on ground  
green

127,213  
9233  
1877  
3,14

219698  
-98191

2119341  
5977



Stone 18x14x8  
Alder 18" N 50° E 1485  
Willow 18" N 89° W 255

22,712  
57,900  
27,712

LINE DATE Feb 5, 1951 PARTY

PROJECT Shafer Ch. 69 T12SR6W

KILHAM FORM P-177

W	Δ 52	nail in 30" stump line going E	36.77	-6026'
S	Δ	Int ∠ N to W on line E to W	97.04 1/2	
	Δ		111.46	+17933
	Δ	∠ RT	3026.1/2	
	Δ		3.140	+26910'
	Δ	∠ RT	3050'	
	Δ	15' ± W of N bank Marys' River 9 1/2' W of N-S line	5.953	+024' 5.953
	Δ		-	
	Δ		7.271	-1099' 7.267
	Δ	± W of 14" Ash (2 1/2' W of N-S line)	1.605	+3933' (cut to transit hd)
	Δ	Ch (cut + good line)	7.294	-1046 7.290
	Δ	nail, 2855 of E Hwy		
	+	Random along hwy shoulder		

187  
/50.23

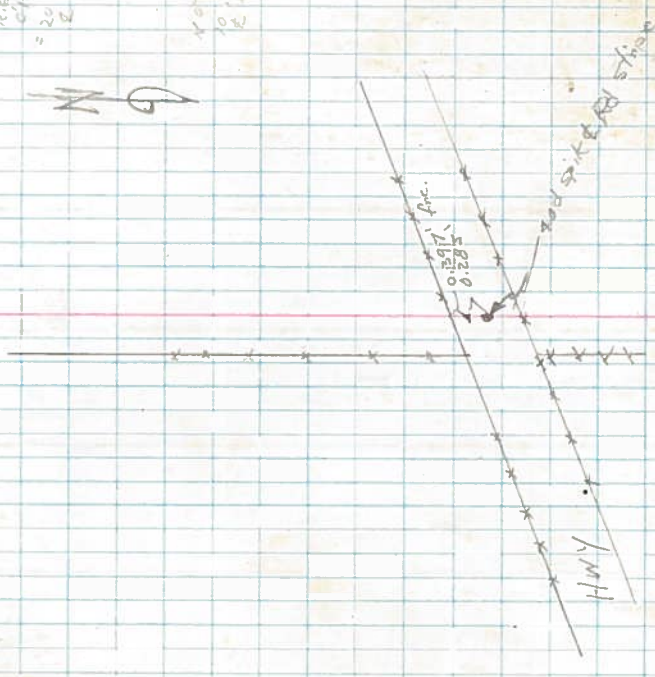
36.77  
9600.5  
2738.19  
97.04 1/2  
111.46  
37.54  
111.46

10  
4130.46  
3026.1/2

415.20  
3050'

15.0  
7.271  
1.605  
= 20.011  
E 100'

10  
E 100'



LINE DATE

PARTY

PROJECT

Shafer

KILHAM FORM P-172

160055

Δ69 3/4 E to S 94°20' Prop line S.  
W. line of land to be deeded.

148.41 12°27' 148.21

381.68 -0°05' 381.68

Δ68

377.15 -0°50' 377.11

Δ67

12.40 - 12.40

390.75 -0°32' 390.73

Δ66

391.23 +1°18' 391.13

Δ65A 1/2 L RT 59°44' S on random N-Welony Hwy  
Shafer's Hwy ← from edge of oil

154.28 - 154.28

Temp NW ci. cor.

Shafer

15.39

323.4

323.4

35.574

36.4

8.4

21.4

24.2

24.0

85.02

94.38

179.06

179.06

118.012

1.126

64.66

7.28

18.76

13.06

53.10

40.034

3 hr.

Thur. May 1, 1951

1.126

64.66

7.28

18.76

13.06

53.10

40.034

180.48

49

Shafer W. line

85°22'

364

69

90°45'

56.70

17.90

57.11

43.50

57.11

67

79.0

44°03'

35.88

59.44

65A

Temp

N.E. ci. cor

Bounds

Marys River

Set 3/4" x 3/4" rod  
133 SW of the cor

MARYS RIVER

Hwy 194 3/4" rods

Temp  
N.E. ci. cor  
Bounds