

C.S. # 2333

Hardcopy 14-6 #10

also see notes in file

F.B. 78-37

C.S. #157  
Sec 19-14-6  
For W.J. Miller

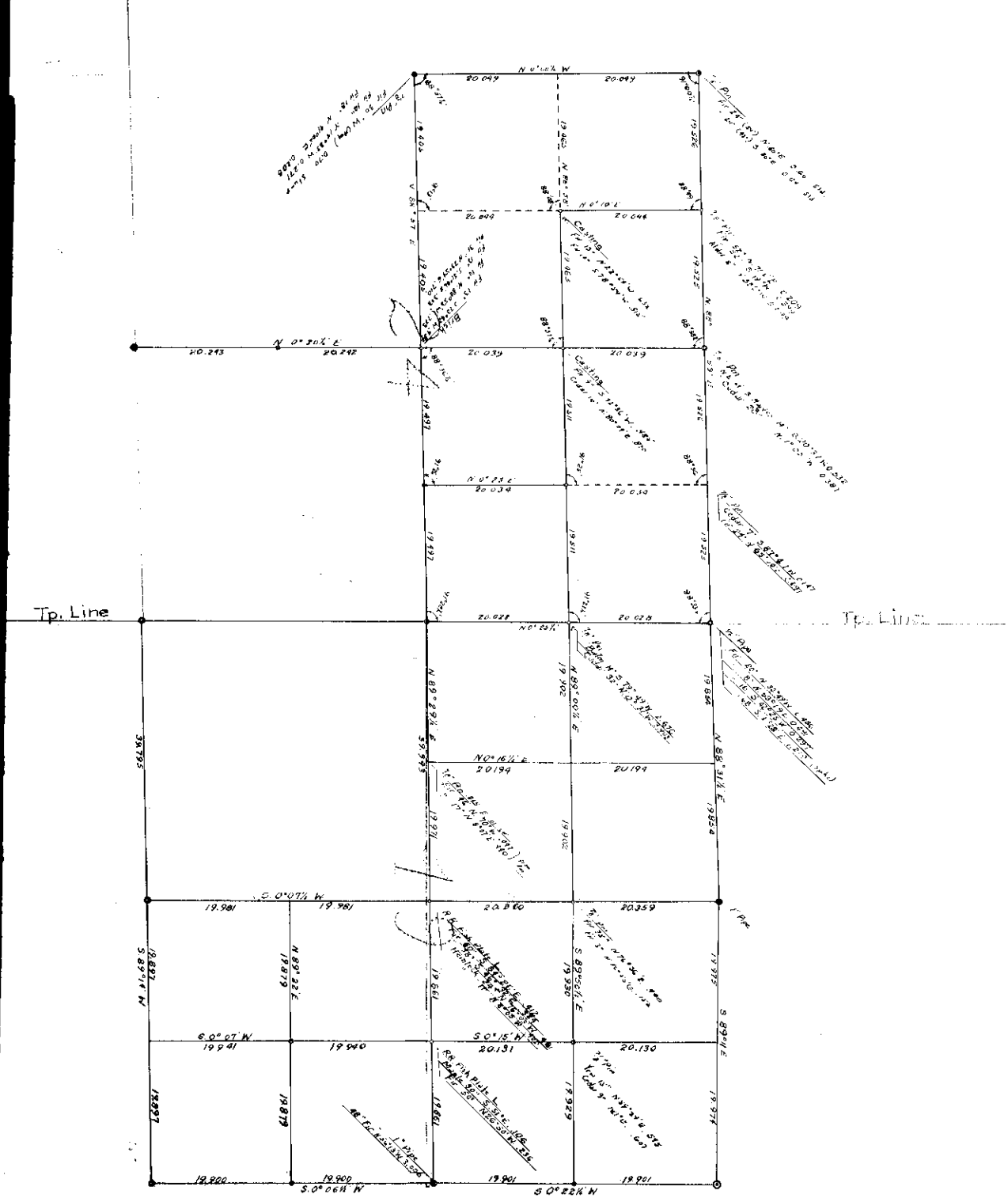
2333

FB 73-37

14-6-77

C.S. # 157

19 & 24



14-6

Book 78



C.S. No 157  
Sec. 19, T. 14 S. R. 6 W.  
1990 Came to by car. 19<sup>th</sup> 20 found small  
Sandstone. Fir Stamp 24" S. 60° E. 23 8" high  
" " 12" N. 53 1/2° W. 21 tree down  
Set 1" x 20" pipe

Spike in top of fir stamp con.  
S. 58° 20' W. 115.

Fir 48" N 56° 13' W. - 7° 42' 3090"  
(South using needle)  
S. 0° 22' E.  
correction W. 22  
South - 6' 50"

S. 0° 05 1/2° W - 8° 20' 2,414

From Brule Sta & Lapping - 14° 20' 5,932

Road Traverse. 12° 46' 4,509

+ 7° 53' 7,656

- 1° 30' 5,292

+ 1° 30' 7,788

- 19° 59' 5,428

5 To cor. Ant. L NW 19° 36' - 21° 58' 826

Set a 3/4" x 27" bolt  
Cedar Stamp 60" N. 26° 14' E 749 to Spike top

" " 24" N. 37° 34' W. 39 Head of spike

" " 36" N 52° 20' E 1,078 to spike S.

" " 24" S. 49-27' W. 665

" " 24 S, 48° W. 49 shattered orit.

Maple 6" S, 72° E. 56 sid. head

For W.J. Miller May 29, 1939

July 3, 1883

Stake  
Fir 12" N 45 1/2° E 83  
" 14" N 71 1/2° W 100  
" 4 48 5/8" W 96  
" 11 12 5/32° E 74

Stake  
Maple 15 S 85° W 39  
Cedar 24 S 63 1/2° E 46

Stake  
Fir 28 S 52° W 169  
" 18 N 19° W 117  
" 15 N 44 1/2° E 194  
" 24 S 64° E 295

Stake  
Maple 6 S 75° E 56  
Cedar 36 N 33 1/2° E 75  
" 24 N 34 W 31  
" 24 S 49 W 48

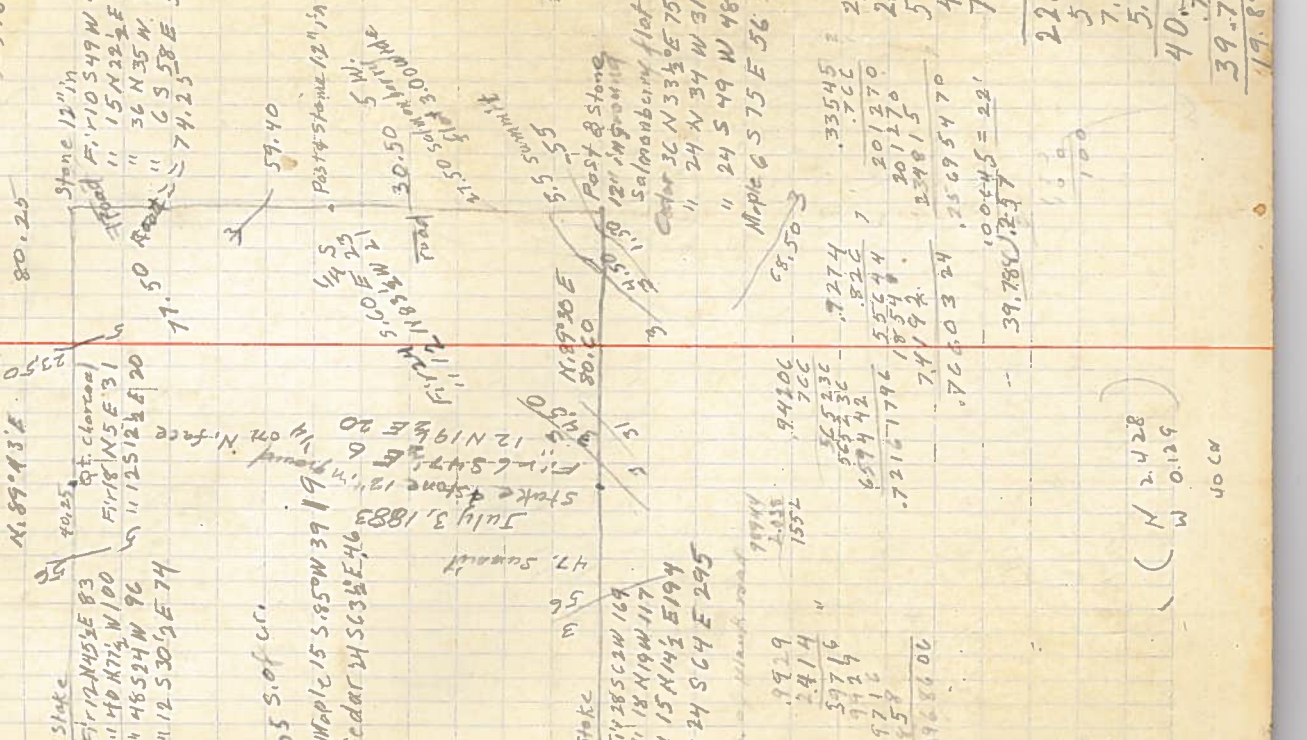
Stake  
Maple 6 S 75° E 56  
Cedar 36 N 33 1/2° E 75  
" 24 N 34 W 31  
" 24 S 49 W 48

Stake  
Maple 6 S 75° E 56  
Cedar 36 N 33 1/2° E 75  
" 24 N 34 W 31  
" 24 S 49 W 48

Stake  
Maple 6 S 75° E 56  
Cedar 36 N 33 1/2° E 75  
" 24 N 34 W 31  
" 24 S 49 W 48

Stake  
Maple 6 S 75° E 56  
Cedar 36 N 33 1/2° E 75  
" 24 N 34 W 31  
" 24 S 49 W 48

Stake  
Maple 6 S 75° E 56  
Cedar 36 N 33 1/2° E 75  
" 24 N 34 W 31  
" 24 S 49 W 48





S. 89° 38' W.  
correction S. 29 1/2'  
(S. 89° 08 1/2' W. 79.589)

6 7.019  
 7 + 3° 25' 3.367  
 8 + 45' 7.181  
 9 - 4° 15' 2.620  
 - .277  
 and . S. 172

Hand in log  
.0895  
.15 S.  
.1735.

10 - 8° 30' 2.054  
 11 - 15° 25' 5.064  
 12 - 20° 4.697  
 13 + 15° 23' 2.367  
 14 + 1° 20' 6.219  
 15 - 2.07  
 16 Dogwood 7" S. 22 1/2° E. 485 and . S. 364  
 Fir 14" N. 39° 23' E 1325  
 " 18" S. 76° 07' W. 1.024 + 5' 16" = 1.010  
 " 18" N 54° 30' W. 1.246 + 18" = 1.227

.195.  
spike in 73  
.279.  
offset .29 S.  
0.23 N. .365 S.

36 L.R. 195' + 9° 24' 4.909  
 37 + 3° 52' 2.244  
 38 0° 1.328  
 39 - 8° 03' 4.004  
 40 6.699

.01224  
.027 N.  
.463 S.  
.497 S.  
.554 S.

corrected to braces to v. m. llers  
S. 89° 14' W

Rec'd.  
L.R. 123'  
Set 9" pipe

5.167 99725 91902  
 1.500 .262 1.054  
 3.367 199130 398508  
 96477 398330 474514  
 5047 197804 197804  
 199450 205144 708 A 2139.793  
 0605 78568 2012795 19.896  
 578502 96477 20.173  
 492885 2357 19.896  
 181255688 98457 20.173  
 .93269 4709 .277  
 4697 67977 887913  
 657783 578502 587913  
 945721 289251 594628  
 563814 192834 48430713  
 375876 228219039 562  
 441373373 14529 40.000  
 99772 29058 39.793  
 2244 24215 .107  
 388088 .04726609  
 199444 .99015  
 199544 396060

Stamp .2325.  
 + 36 cr S. 58 W.  
 offsets  
 .023 N  
 .027 N  
 .023 N  
 .028 N  
 .009 N.  
 .005 N.  
 .115 N.  
 .796 S.  
 .681 S.  
 79.586  
 .00856 = 29.2

40.000  
 39.793  
 .107  
 40.000  
 4.843  
 2.239  
 1.328  
 3.964  
 6.692  
 59.066

4335  
 4525.  
 2620 5.32  
 - 4° 15' 2.00  
 + 1' 4.599



41 +11°48' 4.296 offset .595.  
 42 ← R. 22' 3.869 .023 N. 644 S.  
 ← R. 12' 6.718 offset  
 43 +9°50' 1.349 .028 N.  
 44 ← R. 12' 2.484 offset .741 S.  
 45 Root 0° 1.528 .009 N. 771 S.  
 to corner L L. 51°20' 538°19 W. 1.020 .005 N. 781 S.  
 24 1/2 Found Part of stake 12" below surface  
 25 3/0 Set a 3/4" x 24" bolt 2 washers 12" below surface  
 Fir 15" (now 36") N. 14° E. 1.96 STA. dead  
 Mhd. " 25" N. 54° 10' E. .913 almost invisible  
 " 48" (now 70") S. 64° 40' E. 2.95 STA.  
 " 48" S. 38° 15' E. 1.267 L on bark  
 " 5" S. 38° 15' E. .517  
 " 24 (now 60) S. 61° 30' W. 1.69 STA. up by roots  
 " 18" (now 36) N. 23 1/2° W. 1.17 down

Back to Δ 14  
 N. 0° 02 1/2' N.  
 correction .66 1/2  
 (N. 0° 04' E. 80.679)  
 { S. 1/2 = 39.972 } + 6° 55'  
 { N. 1/2 = 40.707 }  
 15 ← L. 3 3/4' + 5°  
 16 + 6° 10' 7.284  
 17 + 10° 40' 4.857  
 18 Not in total  
 30 3/4" Galv. Pipe 32" long  
 Fir 60' S. 45° E. 1.710 at 3B a spike and  
 " 50 S. 70° 20' W. 1.119 10.809 spike S. = 7.94  
 ← H. 1.196  
 .253E

97887 3 74254 4  
 4296 5 3869 8  
 587322 848284  
 880983 565524  
 195774 754032  
 391548 282762  
 420522552 34468720  
 6064 132918319  
 14589 6706  
 21882 8036  
 .0733408 349  
 72315  
 32140  
 24105  
 .02804215  
 913 .75  
 1367

99272 79619 90421 5  
 4414 4612 6084  
 39708 19928 398684  
 79272 99619 39568  
 39708 397714 198842  
 39708 3987706 392522  
 5848660 45944228 224762524  
 109  
 41346  
 4594  
 504746  
 offset.  
 .209 W. 255 W.  
 .005 W. .234 E.  
 .024 W. .021 W.  
 .043 W. 169 E.  
 .074 W.  
 .355 W.  
 .048 W.  
 .307 W.  
 .264 E.  
 .265 W.  
 .255 W.

59066  
 4203  
 31647  
 6706  
 1329  
 74.953  
 2,468  
 1,528  
 .637  
 2 79.586  
 39.793  
 4,855  
 1,450  
 3,405  
 2,508  
 .8965  
 363  
 4,382  
 4,574  
 7,242  
 16,581  
 4,855  
 21,436  
 21,436  
 19,986  
 1,450  
 79.685 = 64.4  
 1,148



Changed 1047 sec P11

19	+6°21'	7.828	SPICE 46 111 stamp	99386 7828	99452 2673	99851 4165	10.323 39788	16,581 7,780
20	+6°	2.673	SPICE E. 2	198772 74508	298356 678164	498725 598810	.595 99685	2,658 4,152
21	+4°33'	4.165	offset .024 W.	645702 1988704	596712 415188	99773 414	99773 414	31,171
22	-8°50'	1,1095		997993508 99414	265435195 33216	371082 92773	414 92773	1,096
23	-27°16'	5.928		99814 98514	20760 02358336	371082 92773	92773 92773	5,269
24	-21°55'	4.140	offset 3/4 .043 W. 35	98514 98514	02358336 88888	371082 92773	92773 92773	3,841
25	set over of Lts. makes 38 1/2	-.595		10768354 962	5328 61532054	92773 92773	92773 92773	41,377
26	set L Iron R.R. cervice	-.810	313 E	711104 173776	78312 67245	3841 4890	3841 4890	6,653
27	Fr 60° S. 84° E. 382	Mark S. E. 311	Transit line N. 0° 24' W.	799992 444440	308748 590172	7490 3841	7490 3841	3,093
28	" 38° S. 40° E. 304	Mark S.W.		52692804 01943	590172 61532054	36490 94009	36490 94009	51,123
29	Hemlock 24° N. 76° 50' W. 510	mark on S. 410		98514 44487	59827 6623	752074 752072	752074 752072	11,767
30	" 17° N. 12° 15' W. 410	" " E.		44755116 07444707	6653 6653	94009 188	94009 188	6,609
31	set L. 38 1/2	-10° 23'	offset .074 W. 422	98751 6693	99619 4726	98079 1935	98079 1935	60,460
32	+2° 30'	3,096	448 E	296253 888754	199238 697333	490395 254237	490395 254237	4,708
33	+11° 56'	1,880	415 E	592506 592506	398476 398476	882711 98079	882711 98079	3,590
34	+14° 50'	1,005	405 E	640940443 9416	470799394 9416	98079 1935	98079 1935	1,898
35	+9° 04'	6,693	417 E	42372 04246616	99886 3093	17673692 17673692	17673692 17673692	3,062
36	and E. 417 E	4135	417 E	296959 890874	296959 890874	98079 1935	98079 1935	73,718
37	45°	4,126	offset .042 E 3946	296959 890874	296959 890874	98079 1935	98079 1935	60,460
38	0°	3,590	396	296959	296959	98079 1935	98079 1935	4,708
39	+11° 15'	1,935	396	30613694	30613694	98079 1935	98079 1935	3,590
40	+8° 10'	3,093	offset .395 E .010 E. 396	12244 9186	12244 9186	98079 1935	98079 1935	1,898
41	L.R. 31'			0104168	0104168	98079 1935	98079 1935	60,460
42	L.R. 11 3/4'					98079 1935	98079 1935	4,708
43						98079 1935	98079 1935	3,590
44						98079 1935	98079 1935	1,898

41,377  
1,405  
2 39,972  
19,986

2140,707  
20,353  
39,972  
60,325  
.135



Rest 34  
 Rest to 4 sec. cov.  
 18 Janel, 1939, A.H. Seil's Francis  
 James Bell & Ralph Standreuff  
 19 Found stake in ground see ax marks  
 " charcoal. Set 1" pipe (burned pipe)  
 Mark  
 Fir 18" N. 4° W. 34 sid. green W.  
 " " S. 13½° E. 188" " dead  
 Mkd. " 17" S. 67° E. 0.59 spike W.

47 Back to A 24 - .595 first line 812.5.  
 S. 89° 08½' W. 14½'  
 correction N. 14½'  
 { 5.89 - 23' W. }  
 { 79.663 }  
 { 39.943 }  
 { 19.972 }

48  
 49  
 50  
 51  
 52  
 53  
 54  
 55  
 56  
 57

99482 }  
 6874 }  
 397928 }  
 696374 }  
 795856 }  
 546892 }  
 683839268 }  
 60182 }  
 211 }  
 60182 }  
 60182 }  
 120364 }  
 17898462 }  
 16851304 }

73718  
 6534  
 127  
 80.679

312  
 1561  
 1848  
 1934  
 2513  
 3879  
 3604  
 5523  
 20.174  
 4.348  
 6.612  
 1.050  
 32.184

20,173  
 19,972  
 .201

-1.00 ch. 02 N. 30° E

offsets  
 offsets  
 going W.  
 939 N.  
 1041 N.  
 980 N.  
 1051 S.  
 929 N.  
 1095 N.  
 1.024 N.  
 1.183 S.  
 841 N.  
 504 S.  
 337 N.

79.664 337

00423 = 14½'

S 89° 08½' W. 14½'  
 S 89° 25' W. 14½' Tree Branch Trace



75775	65254	95354	
0712	130508	2365	
151550	456770	476770	32,184
550425	456770	572124	4,720
530425	50376058	287062	3,622
58498300	79524	198708	40,526
	2343	225512210	585
	258682	99182	39,941
	398248	1484	
	29686	396738	79,726
	199124	713456	19,7804
	23327376	396725	890118
		99142	286706
		147186088	388487054
		95664	79531
		5229	342
		860976	199062
		191328	378124
		191328	298593
		478320	34039602
		500227056	96394
			4163
			4597
			674758
			1943
			2,333
			1,472
			3,885
			1,795
			5,002
			16,429
			3,404
			19833
			4,135
			4,720
			4,362
			5,225
			1,447
			39,722
			39,941
			79,664
			39,721
			39,944

75775	65254	95354	
0712	130508	2365	
151550	456770	476770	32,184
550425	456770	572124	4,720
530425	50376058	287062	3,622
58498300	79524	198708	40,526
	2343	225512210	585
	258682	99182	39,941
	398248	1484	
	29686	396738	79,726
	199124	713456	19,7804
	23327376	396725	890118
		99142	286706
		147186088	388487054
		95664	79531
		5229	342
		860976	199062
		191328	378124
		191328	298593
		478320	34039602
		500227056	96394
			4163
			4597
			674758
			1943
			2,333
			1,472
			3,885
			1,795
			5,002
			16,429
			3,404
			19833
			4,135
			4,720
			4,362
			5,225
			1,447
			39,722
			39,941
			79,664
			39,721
			39,944

58 L.R. 57' -19°58' 5.023 offset  
 59 L.L. 2° 54' -29°55' 4.185 offset  
 To cor L.S.E 40' 44' 0° .772 offset  
 24111 From a 57 B.S. N. 86° 14' E. Hence S. 50° 06' E.  
 To cor Set a Stone 6" X 12" X 24" S. edge cr.  
 8" pipe over Cedar 24" S. 68 1/2° E. 46  
 " 9" N. 19 1/2° E. 465  
 Humpk 7 1/4" N. 58° 40' W. 373  
 Back to Δ 47  
 N. 89° 43' E. 39.720 +17° 32' 2.365  
 correct for 5.14 1/2  
 19.860 +5° 22' 2.343  
 8215  
 8315  
 8375  
 8535  
 offset 10675  
 041 S. 84 1/2° W. 252 Mark W.  
 5855  
 5955  
 L.R. 284' -16° 56' 5.228  
 +5° 33' 3.420  
 +1° 029  
 5,855  
 Set RR ← Iron  
 Fir 50" N 30° W. 252 Mark W.  
 Maple 30" S. 44° E. 079 " W  
 77  
 68  
 19720  
 L.R. 32° 58 1/2' +7°  
 +15° 19' 5.417  
 +14° 20' 4.502  
 +15° 26' 4.897  
 +7° 13' 4.168  
 1.738  
 offset  
 .939 S.

S. 57° 52' E.  
 S. 0° 21' E. 10 Δ 1

Changed 11-47  
 19720  
 19833  
 4163  
 4597  
 674758  
 1943  
 2,333  
 1,472  
 3,885  
 1,795  
 5,002  
 16,429  
 3,404  
 19833  
 4,135  
 4,720  
 4,362  
 5,225  
 1,447  
 39,722  
 39,941  
 79,664  
 39,721  
 39,944