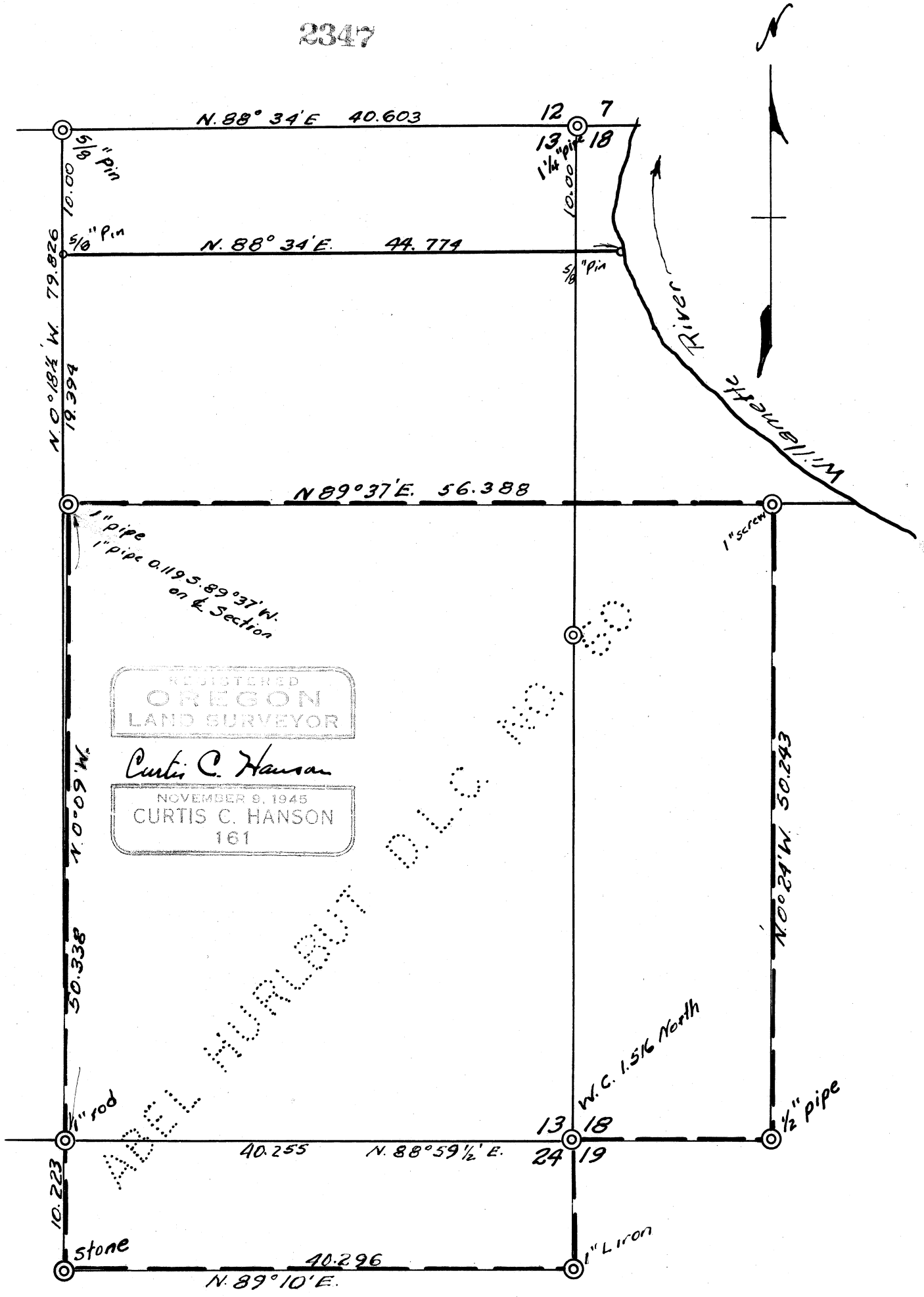


2347

WILLIAM EGGERS
SEC 13, T. 13 S., R. 5 W., W. M.
SCALE: 1" = 10 chains JAN. 7, 1952

2347

2347



2347

Sec 13-13-5
CS 52-2

2347

For Ed Eggers

1-7-52

Beyerlein
Ames

LINE DATE _____ PARTY _____

PROJECT _____

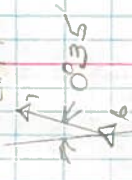
KILHAM FORM P-172 190685

D6	< Rt	-	-	-
D5	-	from A1	-	-
D5	Int L	92°24'	from A1	-
D4	-	-	-	-
D3	-	-	-	-
D2	-	-	-	-
D1	Int Rt	94°5'	from (S) B.T. along rd.	-
D1A	10 S of A	set by compass	from B.T. (S)	-
D1	Int L	81°53'	from S B.T.	-
S. B.T.	(to NW cor	Cl. 60 - 13 - 5)	-	-

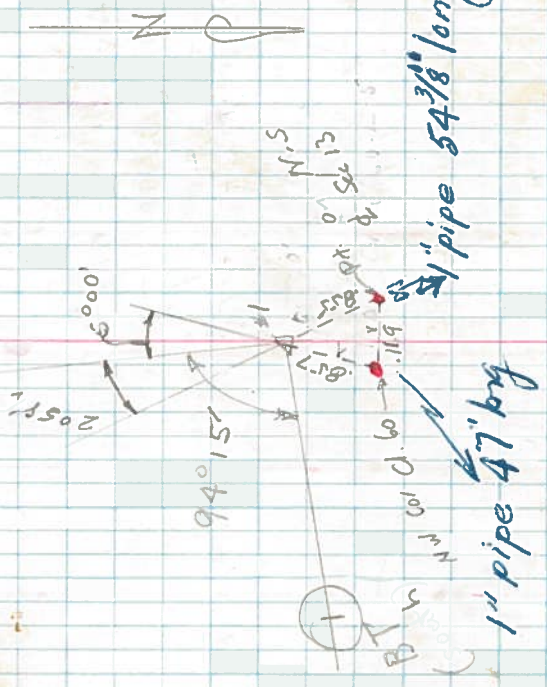
29
20
2) 259.26
1290.43'

10.699
7.987
2.712

10.699
7.987
2.712



7.979
7.779
8.753
3.140
4.613
14.386
8.753
5.603



LINE DATE..... PARTY.....

PROJECT.....

KILHAM FORM P-172

180065

1.131 southerly from power pole at Δ in
power line in line with pole guy.

fd 1" p 1/4 sec Cor $\frac{13}{24}$ -13-5

0.2685 -

Δ 8 Int Lt 113018' from Δ 7

Trees for 1/4 car all gone to Δ 8. Δ 8
fd 80d nail under n w fac. W of old fnc 3f

0.3505 -

Δ 8 Int Lt 129' from Δ 6

10.699 -

fd 1" p Int Lt 129' from Δ 6
W of old fnc 3f

.278 -

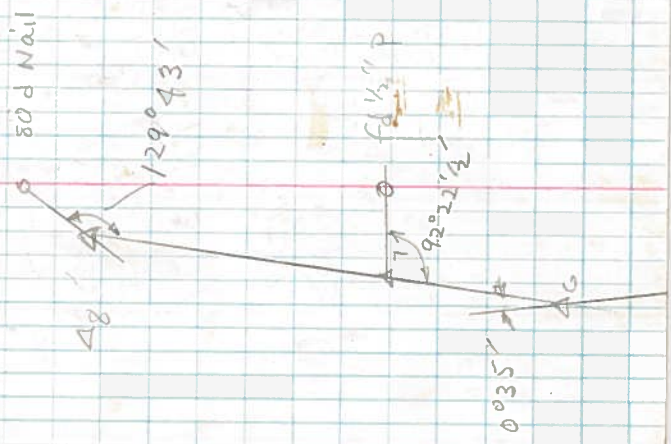
Δ 8 Int Lt 92°22' 1/2

4.118 -

Δ 6 Int Rt 0°35'

8.000
~~6.869~~
234
1.131
8.000
7.73
.27

13
12685



LINE DATE PARTY

PROJECT

KILHAM FORM P-172

180055

Replaced stake with 3"x34" rod.
fd. point of oak stake on N-side
of brick-bat $\frac{12m}{72m}$ as described in survey
by Larsen

1,147

Δ_{14} L.L. 4424

N 11 1/2° E 1,585

Δ_{13} - 9,544

7,959

Δ_{12} In LRT 11953 1/2' from Δ_{11}

5,633 + 042' 5,633

Δ_{11} Int LRT 126028' from Δ_{10}

3,118 - 3,177

Δ_{10} LRT 13968

1,288

Δ_9 7,905 - 040' 7,905 / 9,193

LRT 23027 1/2'

6,353 - 6,353

Δ_1 LRT + 3130' from Δ_6

272 39047
1 19053 1/2
18 1/2
15835
126028

234

12

ONE STAK

brick bats on S. side
at the cor.

8945

3.53

22 ft E of P.I. at road W.

down

1 1/2 p

Massie

group of
60% saplings

gone ->

dist.

1277

1318

8° N 66° 05' E 62.8'

N 86° W 18.2'

10° S 39° 10' W 25.7'

2° S 61 1/2° W 64.18'

13022

oil

N.W. Cor.

Sale.

Set 5' x 34' rod

West of the cor

LINE DATE PARTY

PROJECT

KICHAM FORM P-172

1900s

3.70 E to River from pipe,
 Int L² Rt 132°41' fine Cor, 255
 Int L Lt 20°47' MKD28 Maple, 698 CS 261 BT.
 Int L Lt 161°25' from Δ22 MKLN Ash, 378 CS 261 BT.
 Int L Lt 59' from Δ22 to Ash st; green 0.9 2 (26) 1/2
 full 1/2 P
 Sump
 18x

Δ22 Int L Lt 56°10'

1.936

Δ21 - 7.857

Δ20 Int L Rt 89°09' from Δ19 .697

1.913

Δ19 - 7.40

Δ18 - 7.976

Δ17 7.565

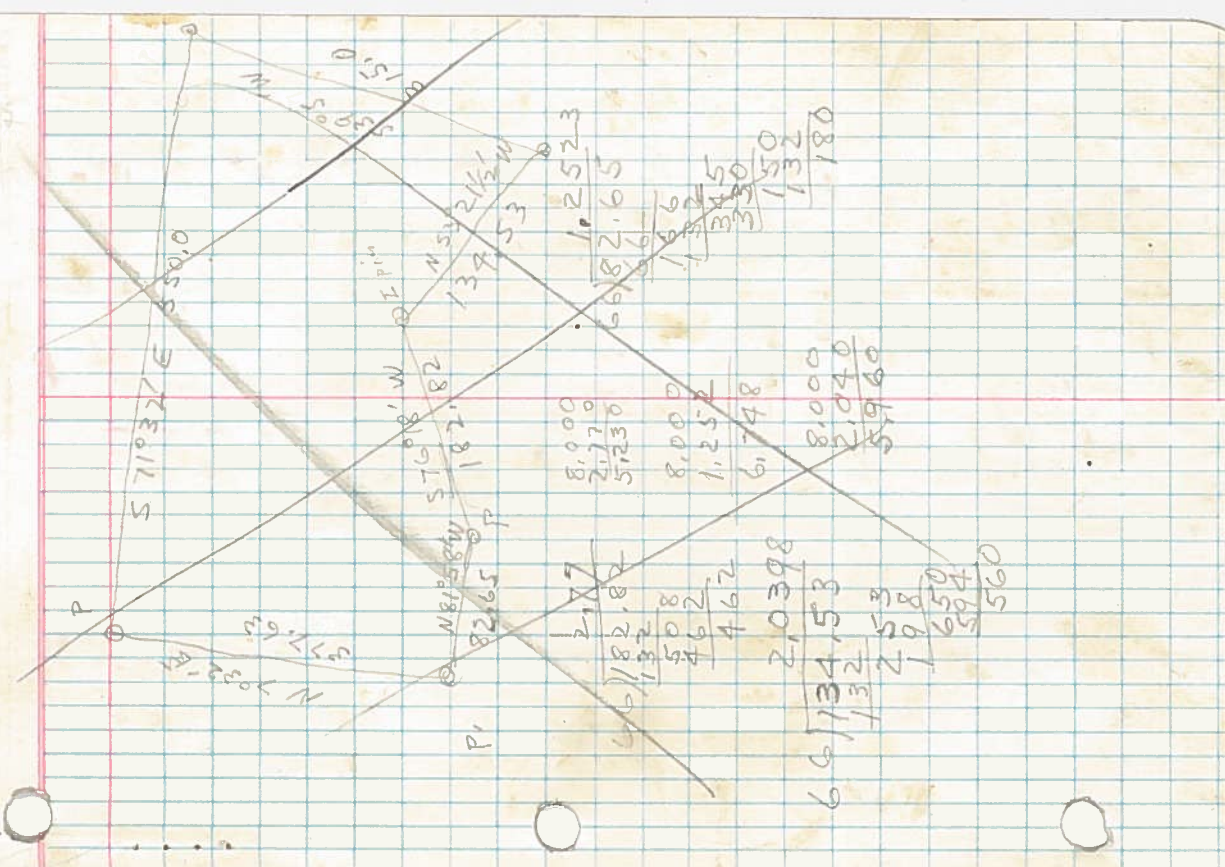
Δ16 L Lt 2°24' .087

6.633

Δ15 7.970

E ± Δ12 L Rt 31°33' from Δ11 .207

1014 2441 2/6 906
 3) 832 28 0 33
 277
 23 1/2



LINE DATE _____ PARTY _____

PROJECT _____

KILHAM FORM P. 172 187286

23 28 260
168

N 87° 11 1/2' E
89909
178920 1/2
179060
N 39° 39 1/2' W

980
7857
1943
49
83

2 | 22037
11018 1/2

7910
7996
7565
6633
7970
381084

118
195
19260
19760

982
66 | 648
594

540
528
120

951
66 | 328
594
340
330
10

276
66 | 182
132
500
462
380



Δ23 221 to H20

4448 to 45

Δ20 CRT 1198 1/2 from Δ19

LINE DATE PARTY

PROJECT

KILHAM FORM-P. 172-187286

98°53'

43.69

N 88°34'E

N 48°54'E

4RT 39°40'

179°60'

140°30'

S 32°13'44"E

90°53'

131°06'

179°60'

S 48°54' W

18 1/2

49°12 1/2

N 56°37'E

N 32°13' W

88°50'

179°60'

91°10'