

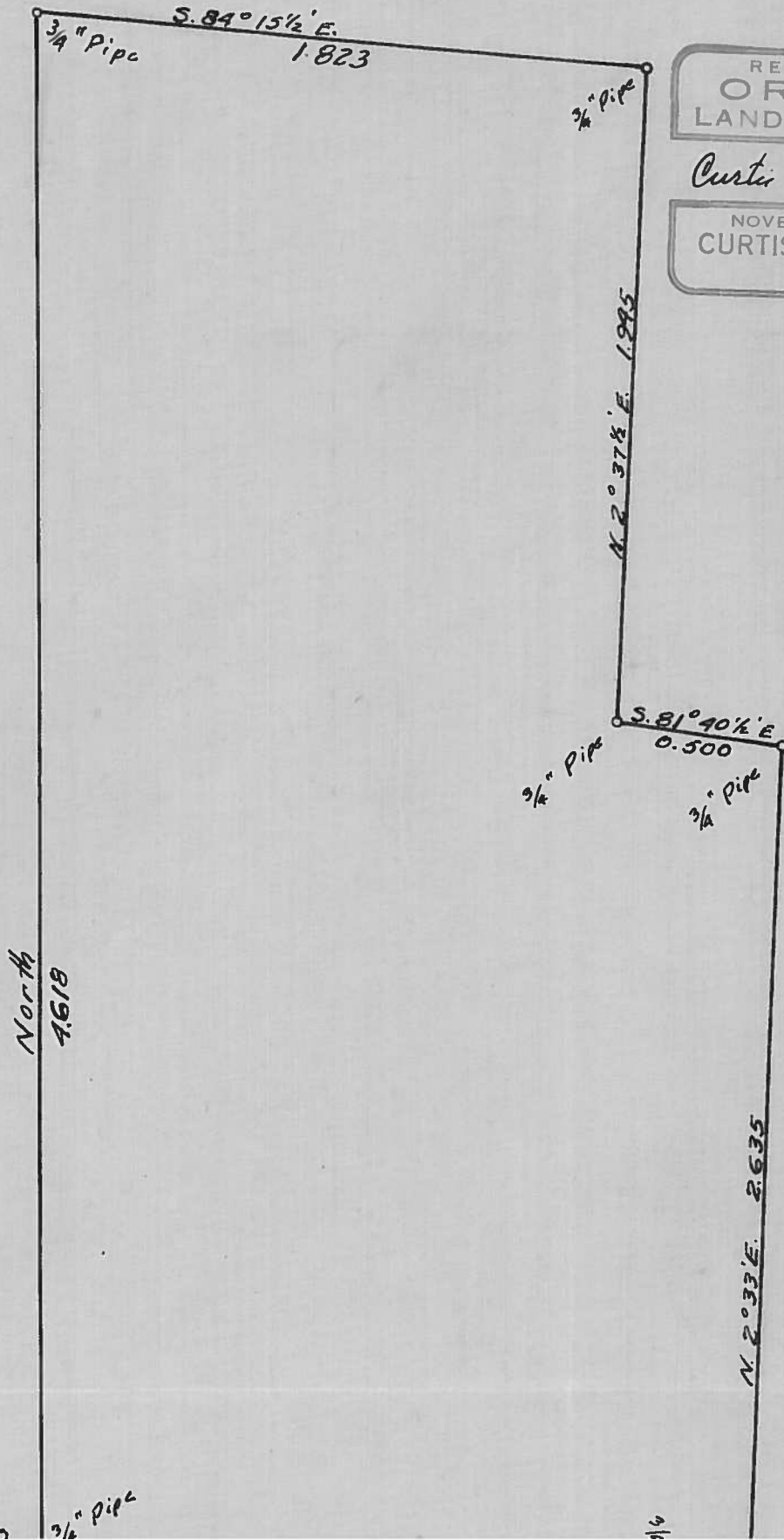
2351

BEN ELLIS

ST. CLAIR D.L.C. NO. 47, TWP. 12 S., R. 6 W., WILL. MER.

SCALE: 1" = 50 links

FEB. 11 1952



REGISTERED  
**OREGON**  
 LAND SURVEYOR

*Curtis C. Hanson*

NOVEMBER 9, 1945  
**CURTIS C. HANSON**  
 161



North  
 4.618

5.000

3/4" Pipe

1/4"

Cl. 47-12-6

C.S. # 526

2351

1-23-52

September 19

Thomas

Manson Gate.

For Ben Ellis

LINE DATE \_\_\_\_\_ PARTY \_\_\_\_\_

PROJECT \_\_\_\_\_

KILHAM FORM P. 172 - 197285

$\Delta_{10}$	7.362	-121'	7.360
$\Delta_9$	-		
$\Delta_8$	4.246	-094'	✓
	-		
	7.681	-2030'	7.674
$\Delta_7$	$\angle$ RT	0°31'1/4"	
	4.499	+020'	-
$\Delta_6$	-		
	4.188	+5011'	4.171
$\Delta_5$	-		
	7.938	+1917'	7.936
$\Delta_4$	$\angle$ Lt	5°38'	
	7.950	-094'	-
$\Delta_3$	$\angle$ RT	16°01'1/4"	
	5.878	-	-
$\Delta_2$	-		
	5.383	-	✓
$\Delta_1$	$\angle$ Lt	109°25'	
	3.367	-1°10'	3.366

Ch. Co.  $\Delta_1$  spike through shot gun shell

F.C. 145 = 12.6

8.000  
 4633  
 31367

85047  
 217134  
 116

4/25  
 314



$\Delta$  Main Line  
N, of Joint

6

LINE DATE ..... PARTY .....

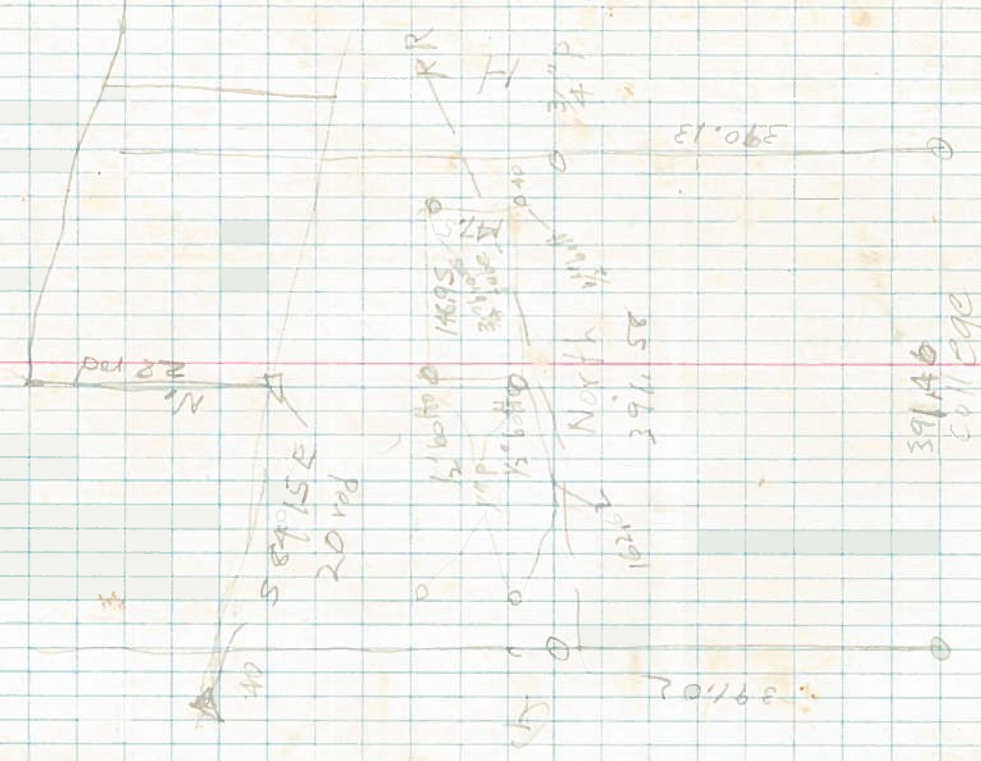
PROJECT .....

KILHAM FORM # 172 - 107206

f Nail in E Tree 0.724  
B Nail in NW Tree 0.578

AKAB

4841 +2°16' 4837  
" 140°01'  
51921 +1°59' 5917  
Δ10 85247



LINE DATE ..... PARTY .....

PROJECT .....

KILHAM FORM P. 172 107206

A<sub>3</sub>

$\angle$  95° 80'  
 0.879  
 H & North & H  
 602 1/2'

H & College

21 hr  
 6 trips  
 No mats

20  
 Ben Ellis as stated  
 p.m.

