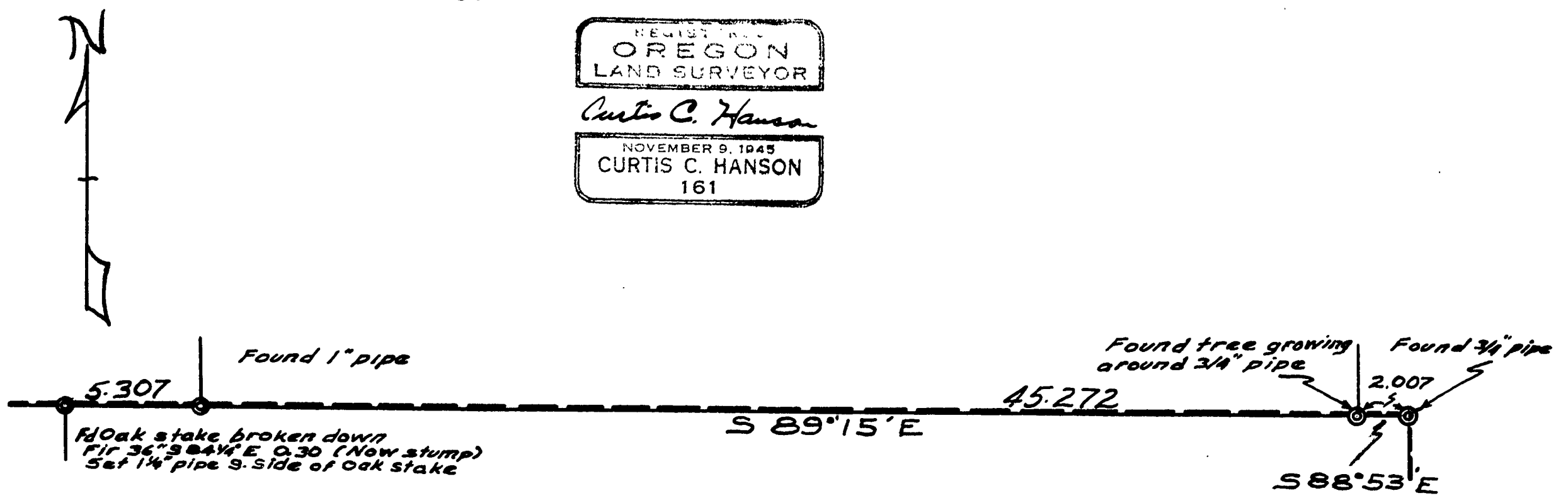


1" = 6 CHAINS

2381  
**IRA MALCOLM**  
 WM. M<sup>c</sup>LAGAN D.L.C. NO. 52 TWP. 14S., R. 6W., W.M.  
 Scale: 1 in. = 5 ch. May 12, 1952

REGISTERED  
**OREGON**  
 LAND SURVEYOR  
*Curtis C. Hanson*  
 NOVEMBER 9, 1945  
**CURTIS C. HANSON**  
 161



▲

# RFFI 11 FRAME 189

CI 52-14-6

CS No 52-26

2381

5-12-52

Bryant  
Ann

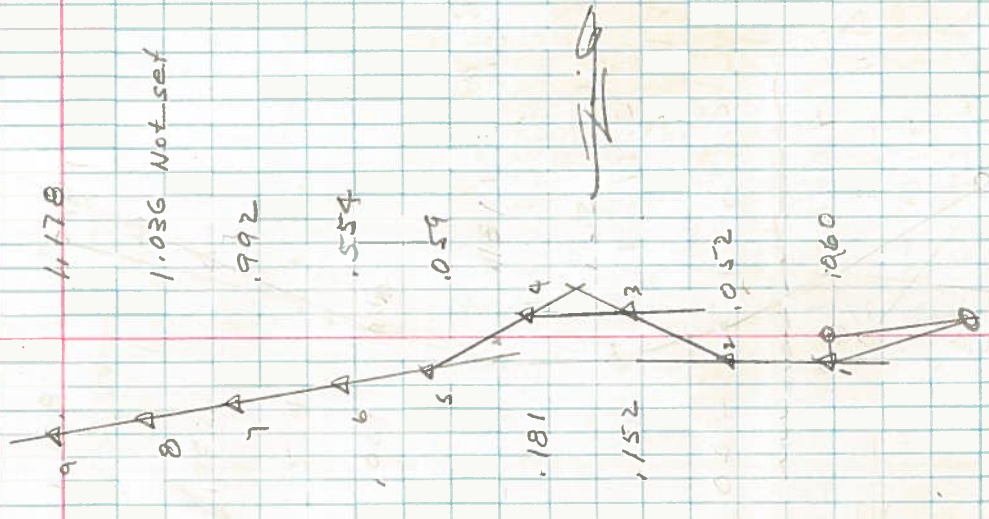
For Ira Malcolm

LINE DATE \_\_\_\_\_ PARTY \_\_\_\_\_

PROJECT \_\_\_\_\_

KILHAM FORM P-172 - 107286

Δ <sub>9</sub>	∠RT	1.569	+4°00'	1.565
Δ <sub>8</sub>	—	—	—	—
Δ <sub>7</sub>	∠LT	1.502	+15°10'	1.484
Spike outside Int ∠LT 120°15' to Marys-Peetuk took @				
Δ <sub>6</sub>	∠LT	5.020	+17°0'	4.792
Δ <sub>5</sub>	∠RT	5.450	-5°42'	5.423
	∠RT	1.903	-3027'	1.900
Δ <sub>4</sub>	∠LT	2.941	7°49'	2.941
Δ <sub>3</sub>	∠LT	4.275	+2°00'	4.272
Δ <sub>2</sub>	∠RT	2.786	+3°15'	2.782
Δ <sub>1</sub>	∠RT	0.060	1°30'	0.060
3/4" P <sub>2</sub> free growing around P				
Δ <sub>1</sub>	Int ∠LT	2.008	+425'	2.002
Δ <sub>1</sub>	∠LT	—	93°35'	E to N
Δ <sub>1</sub>	∠RT	—	—	—





LINE DATE PARTY

PROJECT

KILHAM FORM P. 172 107286

fd oak stake	3" N of $\Delta$	stake was broken down but point found in ground
1" P	$\Delta$ L < RT	under pile of bones.
1 $\Delta$ 13	5.324 +4940' 4°30' $\frac{1}{2}$	5.307
1 $\Delta$ 12	3.915 +3°30' 398'	
1 $\Delta$ 11	2.896 -4°50' 2886'	
1 $\Delta$ 10	8.000 -4°30' 7971'	
1 $\Delta$ 9	2.091 -2°45' 2089'	

