

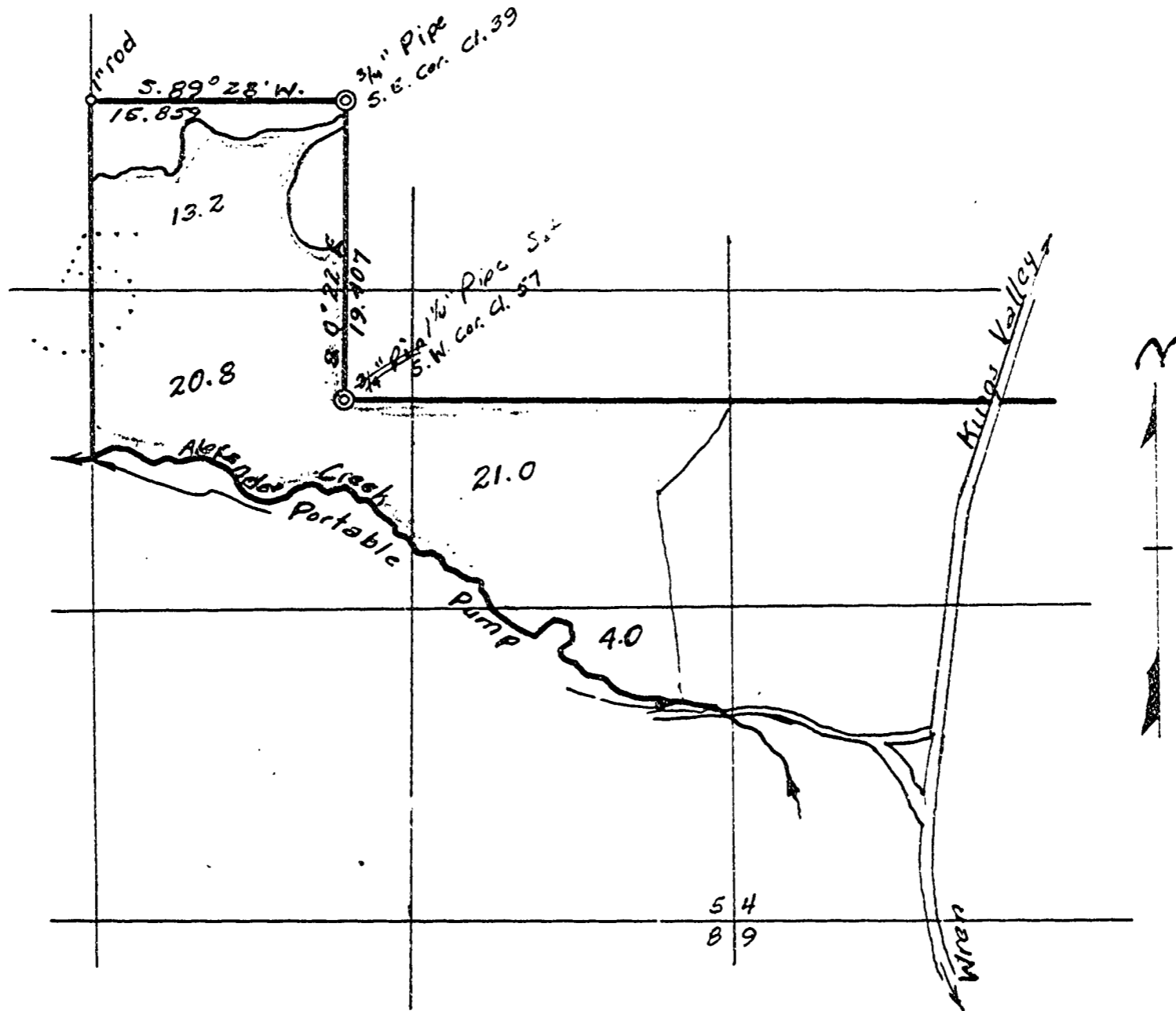
FRANK FLENN PROPERTY

2477

in
Section 5, Twp. 11 S., R. 3 W., W. 1.
Scale: 1 inch = 10 chains April 30, 1953.

I, Curtis C. Hanson, County Surveyor of Benton County, Oregon, hereby certify that this plat was made on April 30, 1953, from maps on file in my office, from County Assessor's aerial photographs, and from notes taken on a survey made on that date, and that monuments are shown hereon as indicated on said maps or as set during said survey.

Curtis C. Hanson



2477

Frank Flynn
Sec 5 T. 11 S. R. 6 W., MM.

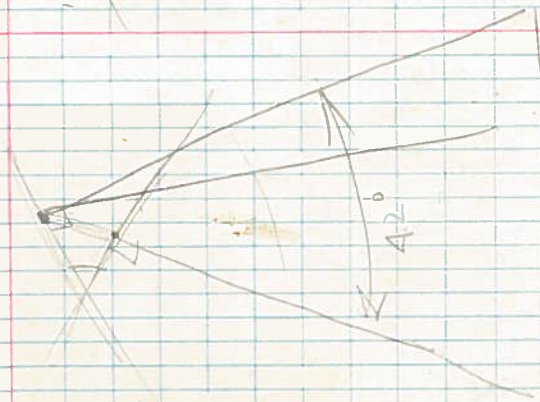
April 1953

LINE DATE April 1953 PARTY B. S. P. in
PROJECT Water rite Sec. 5, T. 11. S., R. 5. W. 4th Plat
N.M.

KILHAM FORM P-172 107286

2,522 1605
66
15132 26
15132
16645 2
1605

Ø Oak V21 5130E
1.0895
3.1690
2.5995
2.626
1.1095
3.721
3.102
3.70
3.69
1.01



35837015

2477

0.075 W. S. of fac set 1/4" P
1.108 E. S. of fac set 1/4" P
at V21 from Orig Oak 30" PT
15" from Ø
This pipe change S. .013 } to fit plat
W. .024 } # both B.F.S.
see notes

Pipe now .062 N & .084 E of fac cov

LINE DATE PARTY

PROJECT

KILHAM FORM P-172 187286

A Iron S.E. side fnc Corp post fnc.
 Δ5 0.387
 Δ4 7.325 - 7.054 back 7.254
 6.342 - 6.020 6.342
 Δ3 from Δ2
 f 3" Iron 1's #2' W.I. of old fnc Cor 30" oak BT N.E.
 Δ3 1.0825 - 1.0825
 Δ2 5.055 + 8.026 5.026
 Δ2-15' W of 8' oak fnc. E of W fnc.
 5.536 - 12.93 back 5.408
 Δ 7.964 + 7.050 7.892
 Np, Moved this p S. 0.13 # W .024
 To match Plat bears.

2/1042
 2/2016
 10008' 2/132034
 66°17'

2472

1008
 1.156
 1.3542
 1.3596
 1.17594
 1.0825
 87970
 35788
 135925
 19045 - 0.50
 13.596
 98940
 18225
 492200
 7196880
 984400
 10661300
 13.596
 2.592
 18225
 91555
 1.387
 690885
 732440
 274665
 38431785
 3545
 1505
 1164
 101292
 112686
 37140
 25322
 114174
 35060
 25322
 13300
 187325
 1.066
 19.391
 19.94
 44
 1013

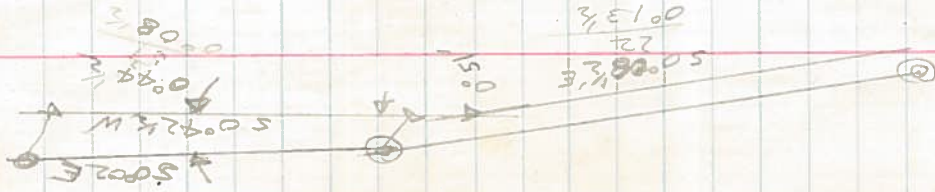
LINE DATE

10.06.14
19025K W

PARTY

PROJECT

KILHAM FORM P. 172 187286



2477

163765
105257
1880
2752
1008
1337000
W. 177270200 N
101237
50264
2422
2444
51850
E 10621762
133007
100488 58 N. 219
106400 E. 062
58200 W. 148
256000 E. 125
W. 103298400 N. 024
5002216 19.407
9.407
1006413
16442
1292048

98650
108217
493250
192300
786500
9867886250
N 5.026

N 13.300
11.068
5.026
N 19.394
519.407
5.013