

NOTE: THIS VELLUM COPY
 WAS MADE FROM A
 BLUE-LINE PRINT OF
 "BETHEL HOMES"
 FILED AS THE
 ORIGINAL.
 6-3-83
 DANNA INGRAM
 BENTON CO SURVEYOR

HOMES

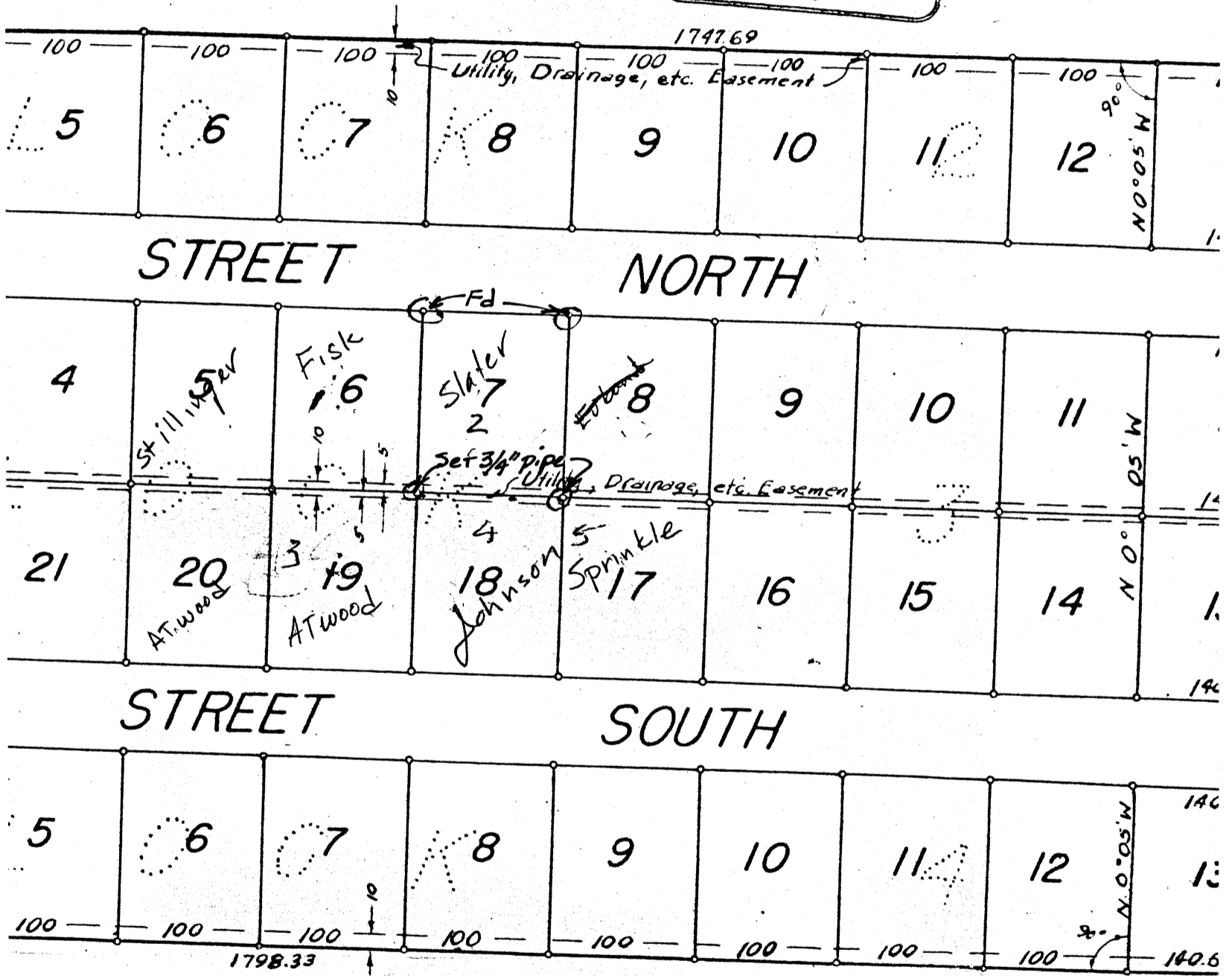
TR D.L.C. No. 46

THE WILLAMETTE MERIDIAN TWP. 12 S., R. 5 W., OREGON

100 FEET

REGISTERED
OREGON
 LAND SURVEYOR
Curtis C. Hanson
 NOVEMBER 9, 1945
CURTIS C. HANSON
 161

NOTE Lot 7



STATE OF OREGON) ss
 COUNTY OF BENTON)
 I, Curtis C. Hanson, being first duly sworn, depose and say that I have corrected monuments the lands represented on the plat shown hereon; that as an initial point a 1-inch pipe, 2 inches in diameter and 36 inches in length, 6 inches below the surface of the section of the east line of the Corvallis - Monroe State Highway with the north line of the Twp. 12 S., R. 5 W., Will. Mer. in Benton County, Oregon, 42.920 chains N. 89° 55' E., along said Claim line, 25.872 chains to the west line of said tract, 9.452 chains to a 1-inch pipe, the north line of "LINCOLN TRACTS" and same extended, 27.241 chains to said Highway, thence N. 4° 30' E., along the center of said Highway, 9.481 chains to said initial point, containing 25.39 acres.
 EXCEPTING from the above described premises the millrace, the dimension shown on said plat, including, however, an easement, for road purposes, across said millrace.

Curtis C. Hanson