

36
Recessed
Survey #122 #271
Beginning at the S.W. cor. of
James H. Stewart D.L.C. #49
Tp. 11-4.

Set 1 1/4" pipe. Set from Oak stamp
Double service 10" N. 77°30' E. 130 cks.
" 8" S 49°30' W. 426 "
(Easterly)

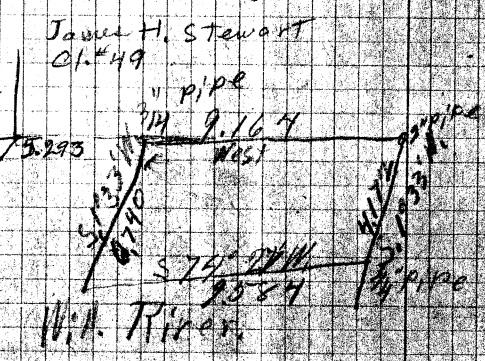
1 13.997
2 7.460 to 2 1/4" pipe
N. 114
3 3.662 offset
4 10.202 offset
5 5.392 offset
6 .083 striking south of cor.
Set 3/4" pipe 46" long.
Mopie 12" N. 73°30' W. 394 cks.
Fir. 30" N. 11°30' W. 14 x std.

Backs to Δ
S. 1°33' W.
E. 45°
N. 128
4.081
- .037 3/4" pipe
5.048

P. F. Thompson
W.S. Phillips

3662 3062 10.202
83999 9153 925
32958 10986 51610
32955 1831 2040
329 32 408
10 32
2 12885 053458
3.6594
5392
611
5392
539
323

offsets.
129
.053
.006
.083
1.0081528
271.000
206.00
50.00
33.25
16.750



#271
139942
34595
102025
278598
5.392
33,2504

13997
1162
14457
9168
5.29, 30.051
128
4.209
0.937
4.172

13.997
9.164
4.833
.46
5.393