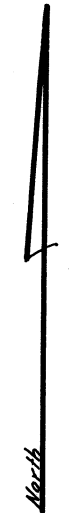
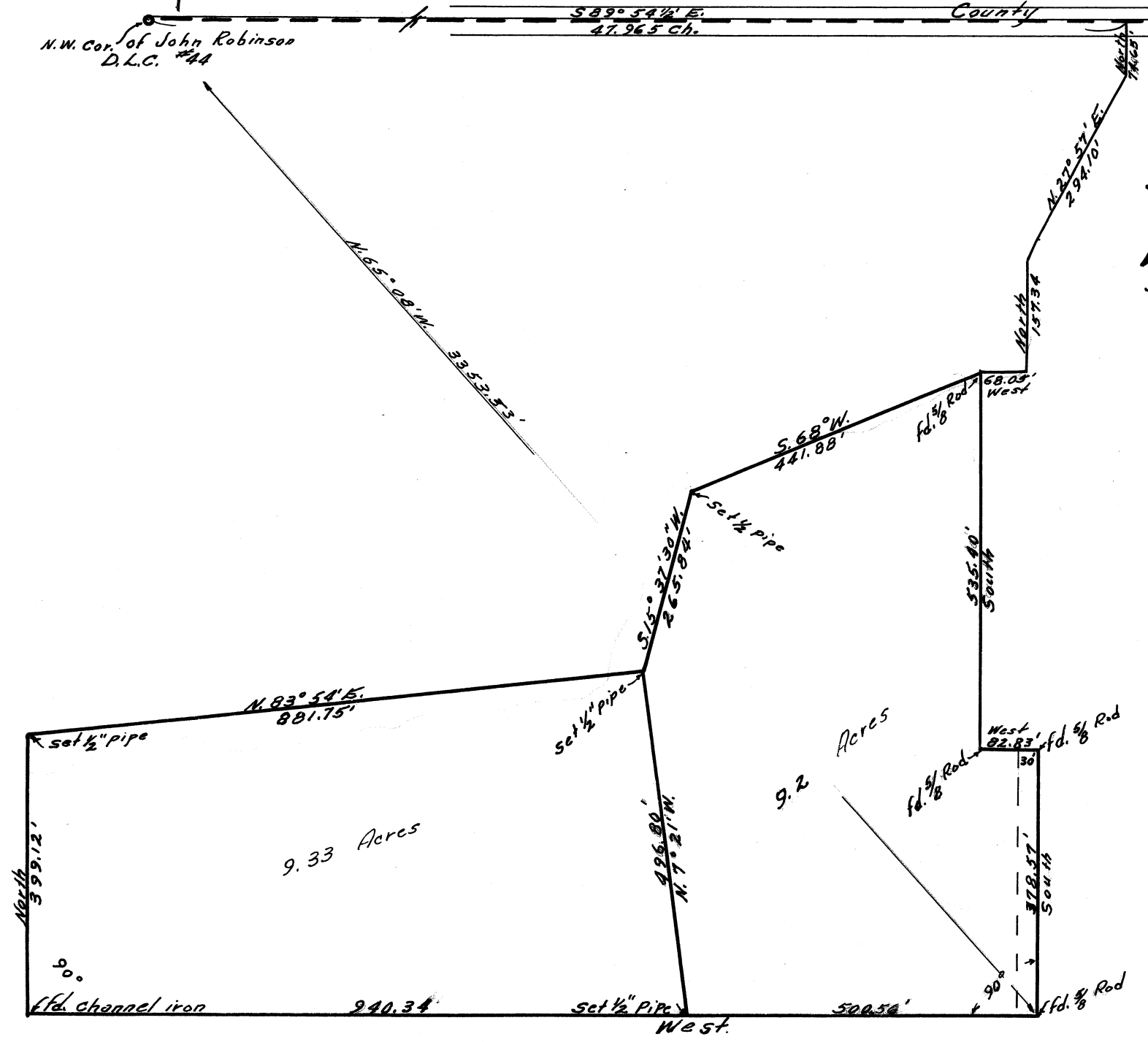


N.W. Cor. of John Robinson
D.L.C. #44

S89°54' E.
47.265 Ch.

County Road

C.S. 2855
Chesley Avery
Survey in John Robinson D.L.C. #44
Section 14 & 15 T.11 S.R.5 W. of the
Will. Mer. Benton County Oregon
Scale 1" = 200' Dec. 15, 1956



REGISTERED
OREGON
LAND SURVEYOR

J. W. Hanna
NOV. 8, 1953
J. W. HANNA
306