

Q.S. 2876
 Hector MacPherson
 Survey in Clement Barker Cl. #60, Section 34

Scale 1" = 300'

T. 12 S. R. 6 W. of the Will. Mer.

Jan. 30 - 1957

County

Road
 fd. stone 10" x 14" x 16"
 Oak 2" dia. bears S. 58° E. 22.24'
 N.E. Cor Cl. #60

E. 85.70'
 N. 0° 50' W.

fd. 8" Boulder
 Oak 16" dia. bears N. 87° 41' W. 19.54'
 West North West Corner
 Cl. 57

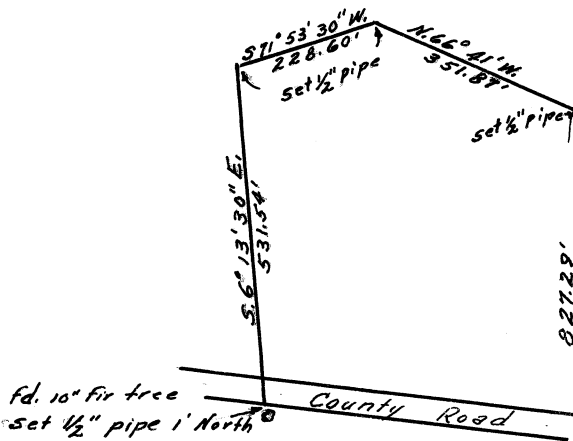
2186.20'

N. 0° 21' W.

821.29'

REGISTERED
 OREGON
 LAND SURVEYOR

J. W. Hanna
 NOV. 8, 1953
 J. W. HANNA
 306



fd. sandstone 6" x 14" x 14"
 set, slanted 3/4 pipe over top
 S.W. Cor of Cl. 57

fd. Sandstone 6" x 16" x 16"
 fir stump 30" dia. bears
 N. 4° E. 27.06', set
 slanted 1 1/4" pipe over
 Top
 N.W. Cor Cl. 61