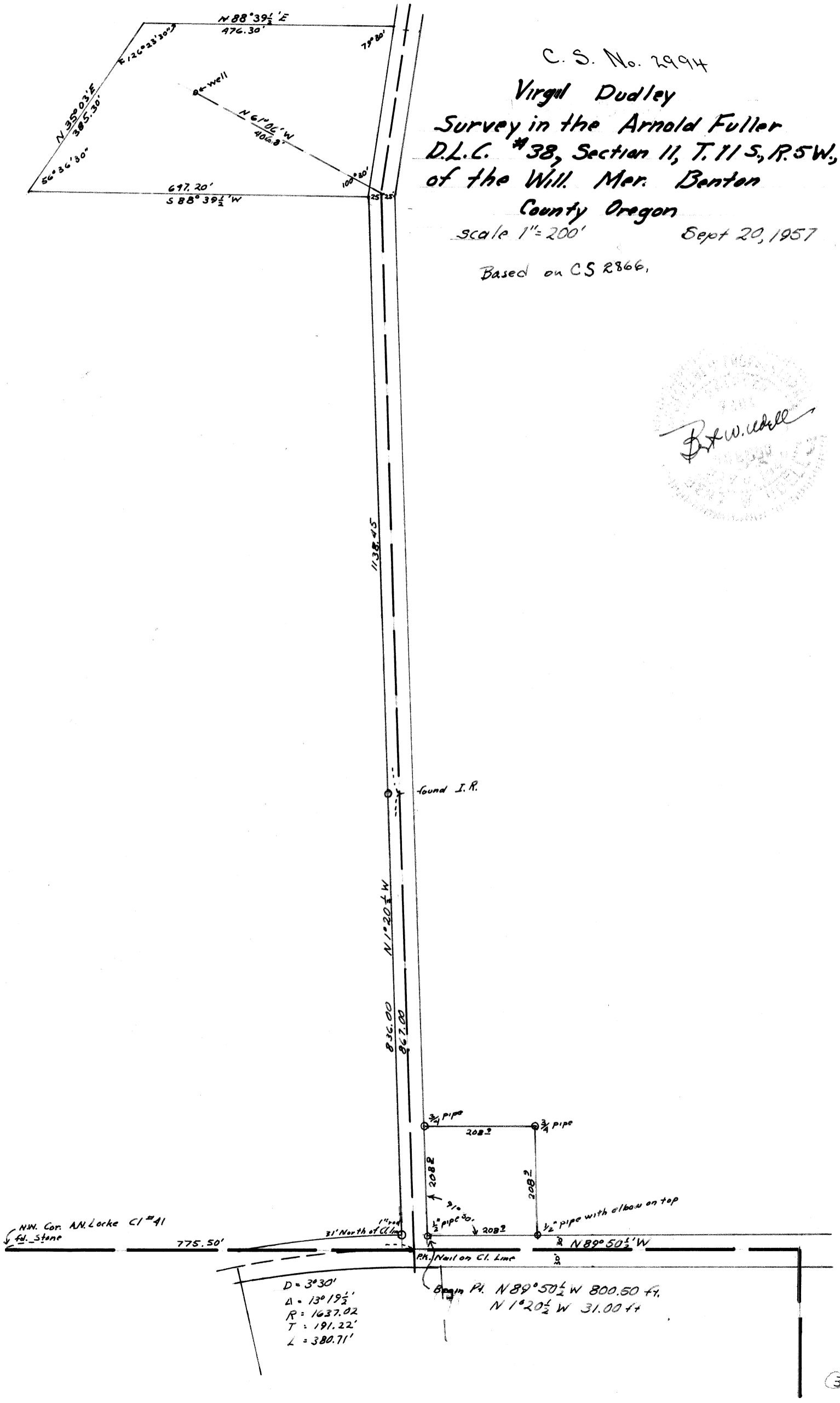


C. S. No. 2994  
 Virgil Dudley  
 Survey in the Arnold Fuller  
 D.L.C. #38, Section 11, T. 11 S., R. 5 W.,  
 of the Will. Mer. Benton  
 County Oregon  
 scale 1"=200' Sept 20, 1957  
 Based on CS 2866.



D = 3° 30'  
 Δ = 13° 19 1/2'  
 R = 1637.02  
 T = 191.22'  
 L = 380.71'

Begin Pt. N 89° 50 1/2' W 800.50 ft.  
 N 1° 20 1/2' W 31.00 ft.