

C.S. 332

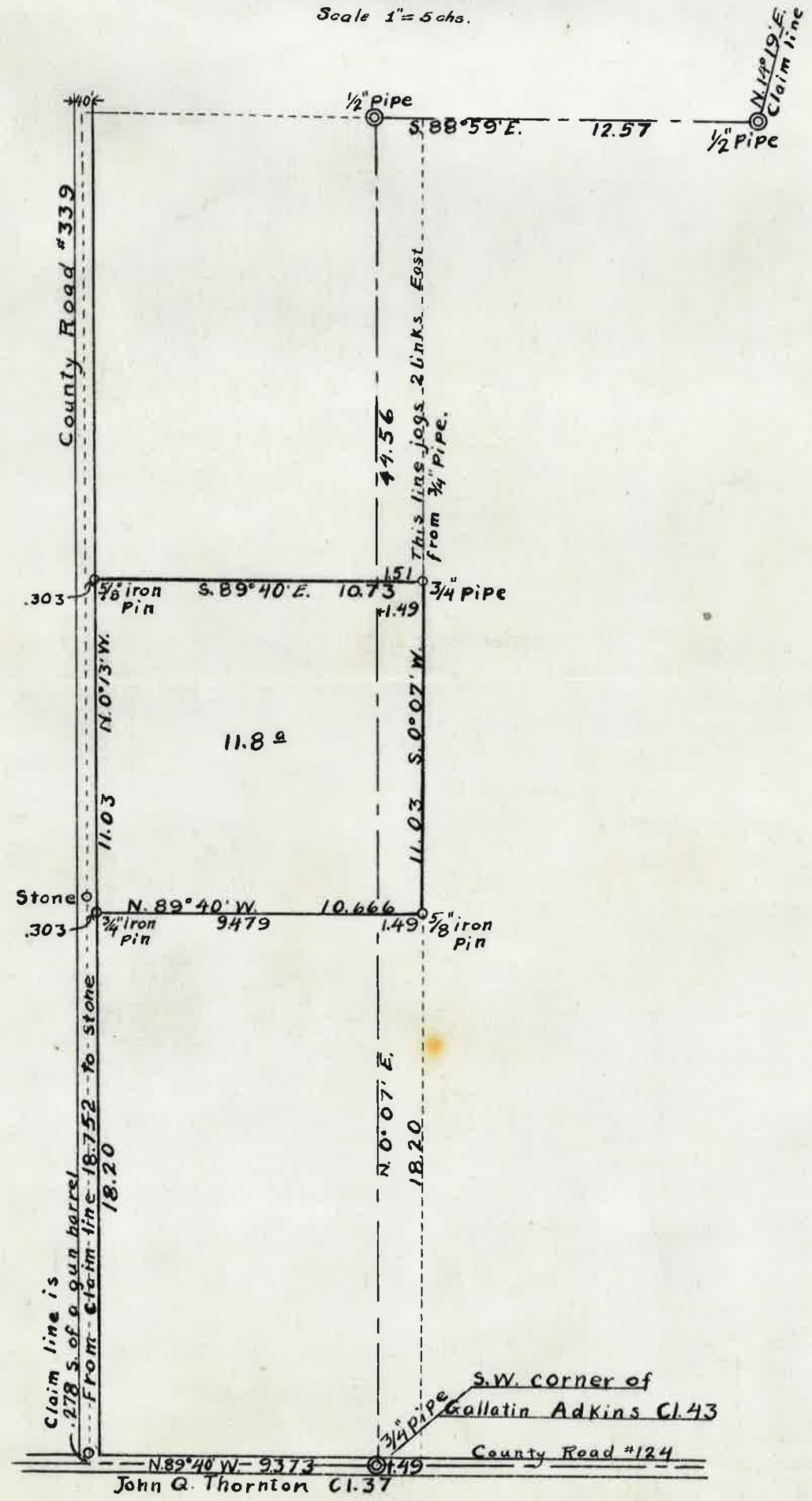
SEE NOTES IN FILE

FIELD BOOK 12, PAGE 54

COUNTY SURVEY #163

Sec. 36 T10S R4W. W.M.

Scale 1" = 5 chs.



State of Oregon)
 County of Benton) SS.

I, W. C. Galloway, being first duly sworn say, that I am a qualified surveyor; that on the 8th day of March 1921 I surveyed the land represented by the hereto annexed plat; that I made said plat, and the distances and courses marked thereon are true representations of such survey, and the land so surveyed, which land is described as follows, to-wit:- Beginning at a point on the west line 18.20 chs. N.0°07'E. of the South West corner of the Donation Land Claim of Gallatin Adkins and wife, known of the plats of the U. S. Survey as Notification No. 1743, and Clai Nos. 79 and 43, T.10 S.Ra.3 and 4 W. of the Will. Mer. and running thence S.89°40'E. 1.49 chains to a 5/8" iron pin, thence N.0°07'E. 11.03 chains to a 3/4" pipe, thence N.89°40'W. 11.033 chains to a 5/8" iron pin on the east line of a road, thence S.0°13'E. 11.03 chains to a 3/4" iron pin on the east line of said road, which pin is 18.20 chains North of the north line of claim #37, thence S.89°40'E. 9.479 chs. to the place of beginning containing 11.80 acres.

Subscribed and sworn to before me this day March 1921.

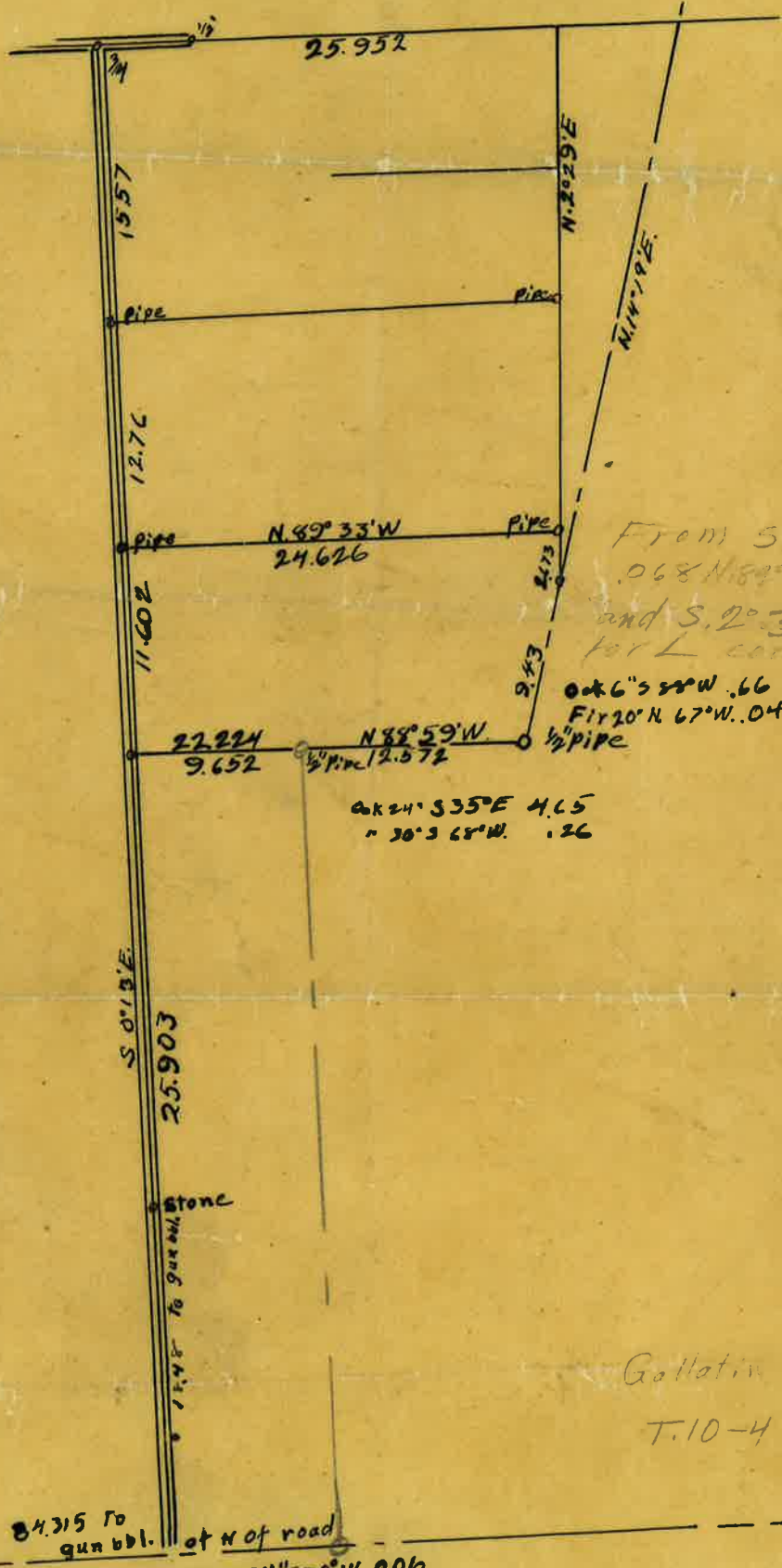
Notary Public for Oregon.

My Commission Expires--

332-A

C.S. # 332A

SEE ALSO 332



From Stone
 .068 N 89°36'W
 and S. 2°32'W. 066
 for L cor.

OAK 6°33'W .66
 Fir 20° N 67°W. 04
 1/2" pipe

OAK 24°33'55"E 4.65
 " 30°3 68"W. 1.26

Gallatin Adkins Cl.
 T.10-4

I. pin
 TO 25
 Oak fence posts S. 26°W. 4'

332A

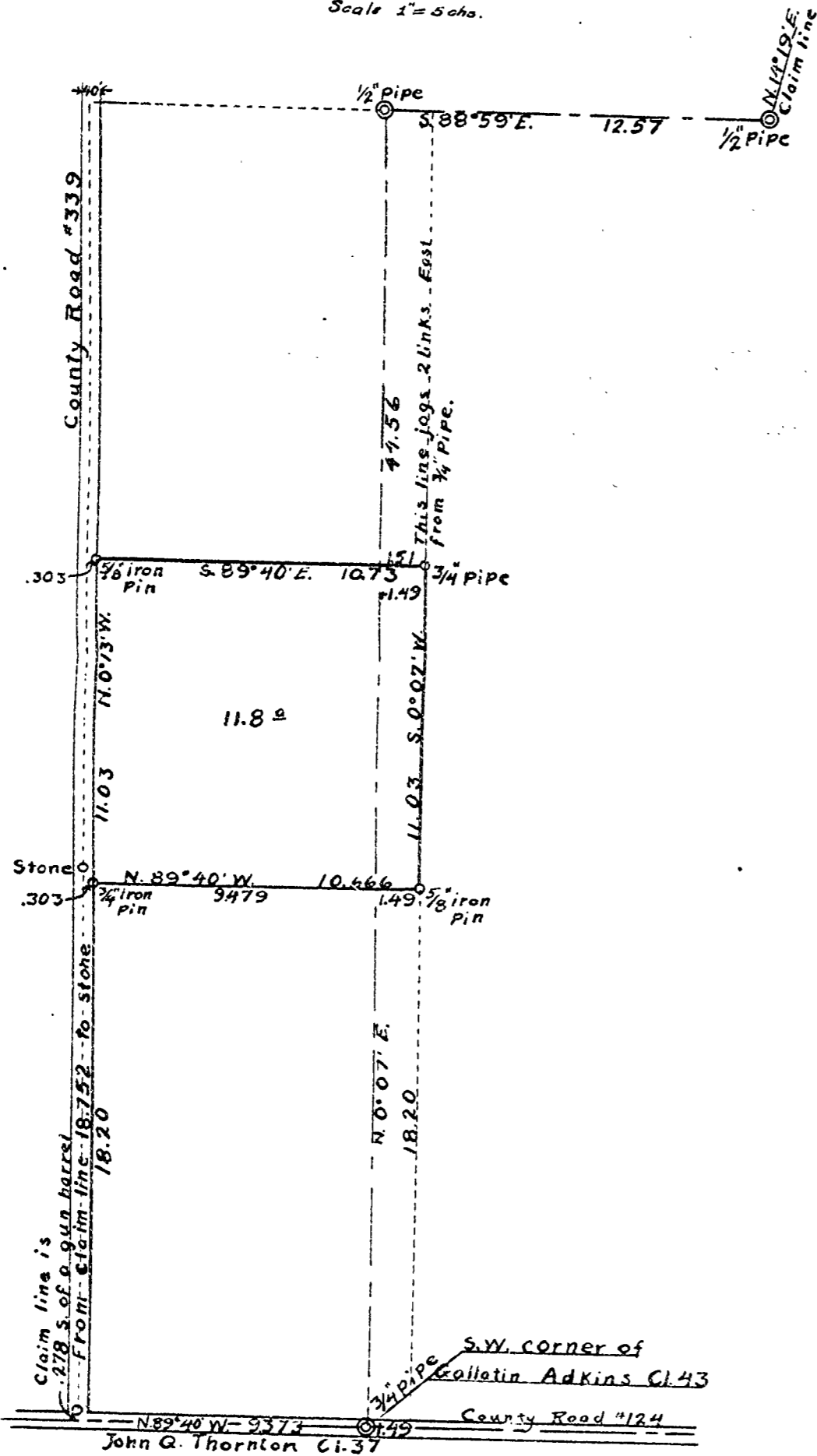
332-A

332A

COUNTY SURVEY #163

Sec. 36 T10S R4W. W.M.

Scale 1" = 50 chs.



State of Oregon)
 County of Benton) SS.

I, W. C. Galloway, being first duly sworn say, that I am a qualified surveyor; that on the 8th day of March 1921 I surveyed the land represented by the hereto annexed plat; that I made said plat, and the distances and courses marked thereon are true representations of such survey, and the land so surveyed, which land is described as follows, to-wit:- Beginning at a point on the west line 18.20 chs. N.0°07'E. of the South West corner of the Donation Land Claim of Gallatin Adkins and wife, known of the plats of the U. S. Survey as Notification No. 1743, and Clai Nos. 79 and 43, T.10 S.Ra.3 and 4 W. of the Will. Mer. and running thence S.89°40'E. 1.49 chains to a 5/8" iron pin, thence N.0°07'E. 11.03 chains to a 3/4" pipe, thence N.89°40'W. 11.033 chains to a 5/8" iron pin on the east line of a road, thence S.0°13'E. 11.03 chains to a 3/4" iron pin on the east line of said road, which pin is 18.20 chains North of the north line of claim #37, thence S.89°40'E. 9.479 chs. to the place of beginning containing 11.80 acres.

Subscribed and sworn to before me this day March 1921.

Notary Public for Oregon.

My Commission Expires--



CHAINS

57	Back to Δ or	Fill	Fill +	2.673
30	S. 89° 23' W	23.25'		
50	219.87 33'	23.25'	1.619	
30	(Begin on)		.332	
31			2.151	Offset
32		29.10'	6.844	Offset
33	144 ft 10'		2.800	Offset
34			5.453	
35	169 ft 11'	19.10'	4.808	Offset

Continued from next page
 Beg. at 4 corner Sec 5
 P. 10 - 7
 Partly

1	4996	+ 2.557		
2	5051	+ 2.25		
3	4866	- 1.1		
4	1,362	+ 5.5		
5	1,612	7.5		

1540	
332	
2851	
1723	
6841	
2800	
5453	
4607	
24622	

4996
5051
4866
14913
1362
1612
17887