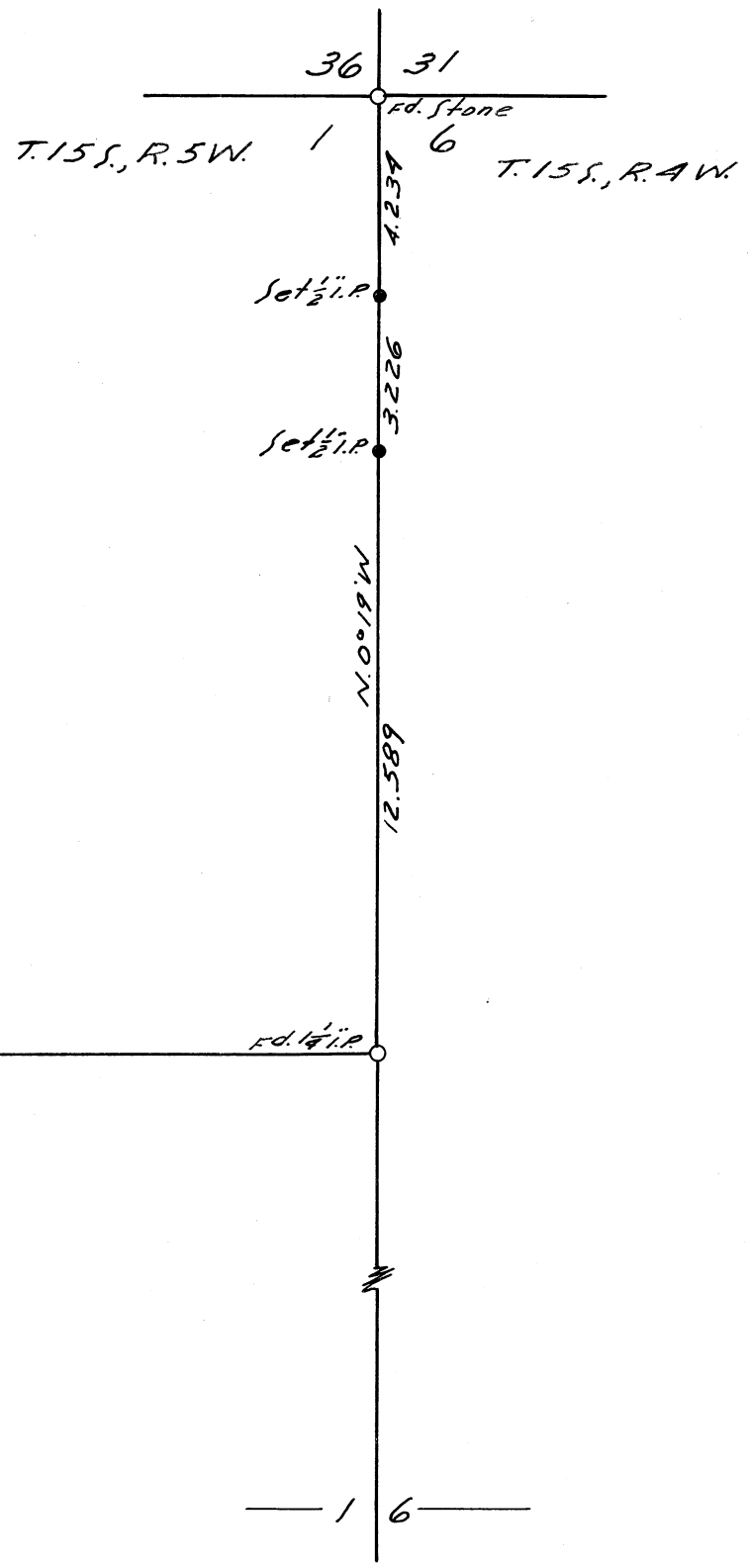


CS 3330
 L.W. Rutherford
 SEC. 1, T.15S, R.5W.
 Benton County, Oregon
 Surveyed Feb. 1, 1960
 Scale 1"=4 chs.



Ed. 1 $\frac{1}{4}$ " i.p. (20.109) (S. 89° 53 $\frac{1}{2}$ ' E.) Ed. 1 $\frac{1}{4}$ " i.p.