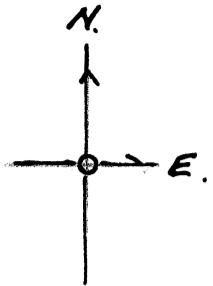


FOUND NW COR.  
DLC STONE  
& WHITE  
POST

DLC 41



C.S. # 3333

NELSON LOCKE

A. LOCKE D.L.C. 41, T115, R5W, W.M.

SCALE 1" = 200 FT.

BERT W. UDELL

TRANSIT & CHAIN.

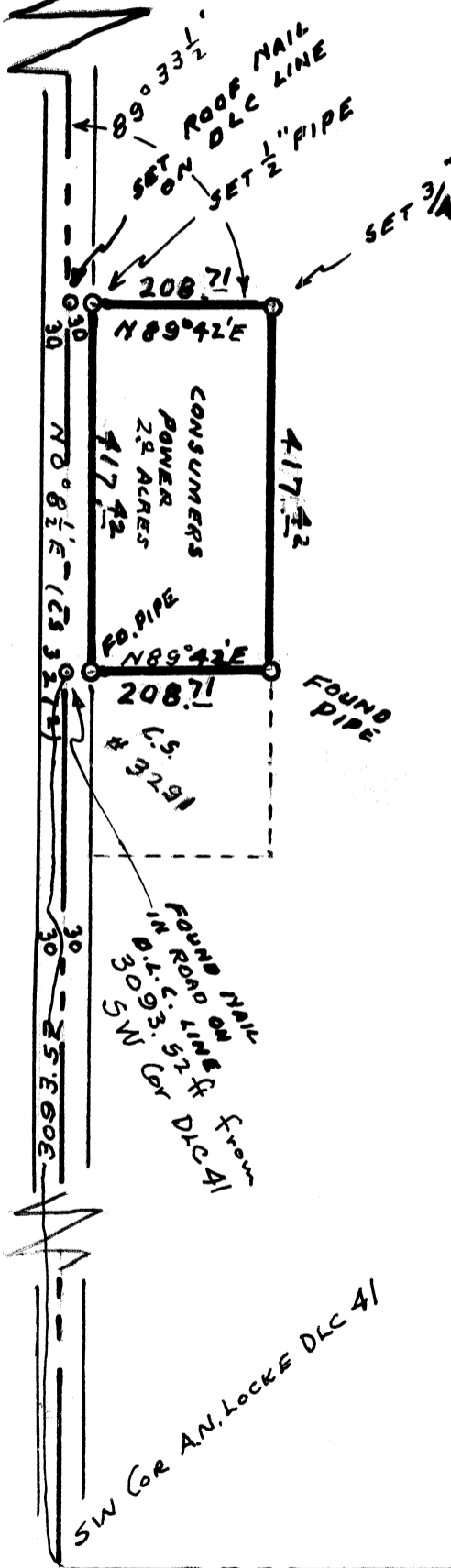
by HOWARD E. TAYLOR

FEB 4 1960

REG. ENGRS.

(BASED ON)  
C.S. 3291

H. E.  
Taylor



SW COR A.N. LOCKE DLC 41