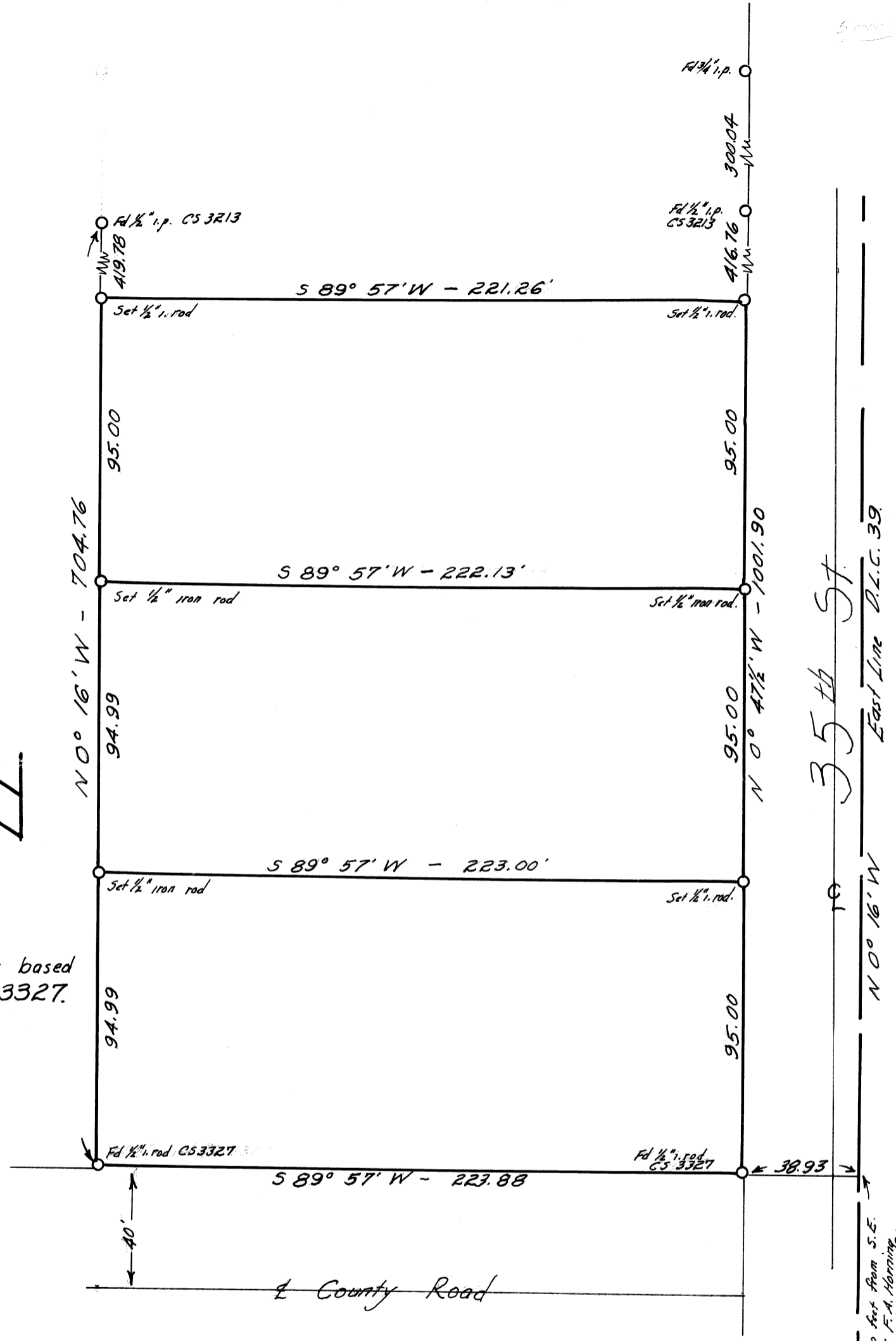
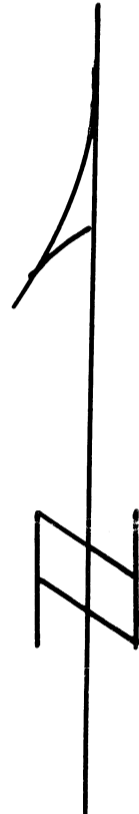


Bearings based on CS 3327.



832.0 feet from S.E. corner of F.A. Hanning P.L.C. 39, T.12S., R.5W., W.M. (Plat Sheet 12-5A)

CS 3386 SURVEY for

GORDON DODGE

D.L.C. 39, T.12S., R.5W., W.M.

Scale: 1 in. = 40 ft
July 1960

REGISTERED OREGON LAND SURVEYOR

C. W. Dane

MAY 10, 1957
C. W. DANE
396

C. W. Dane
Corvallis, Oregon.