

C.S. 3435

SURVEY FOR B. N. WOOD
IN HEMAN C. LEWIS D. L. C. NO. 47,
T11S, R5W, WILLAMETTE MERIDIAN,
BENTON COUNTY, OREGON.

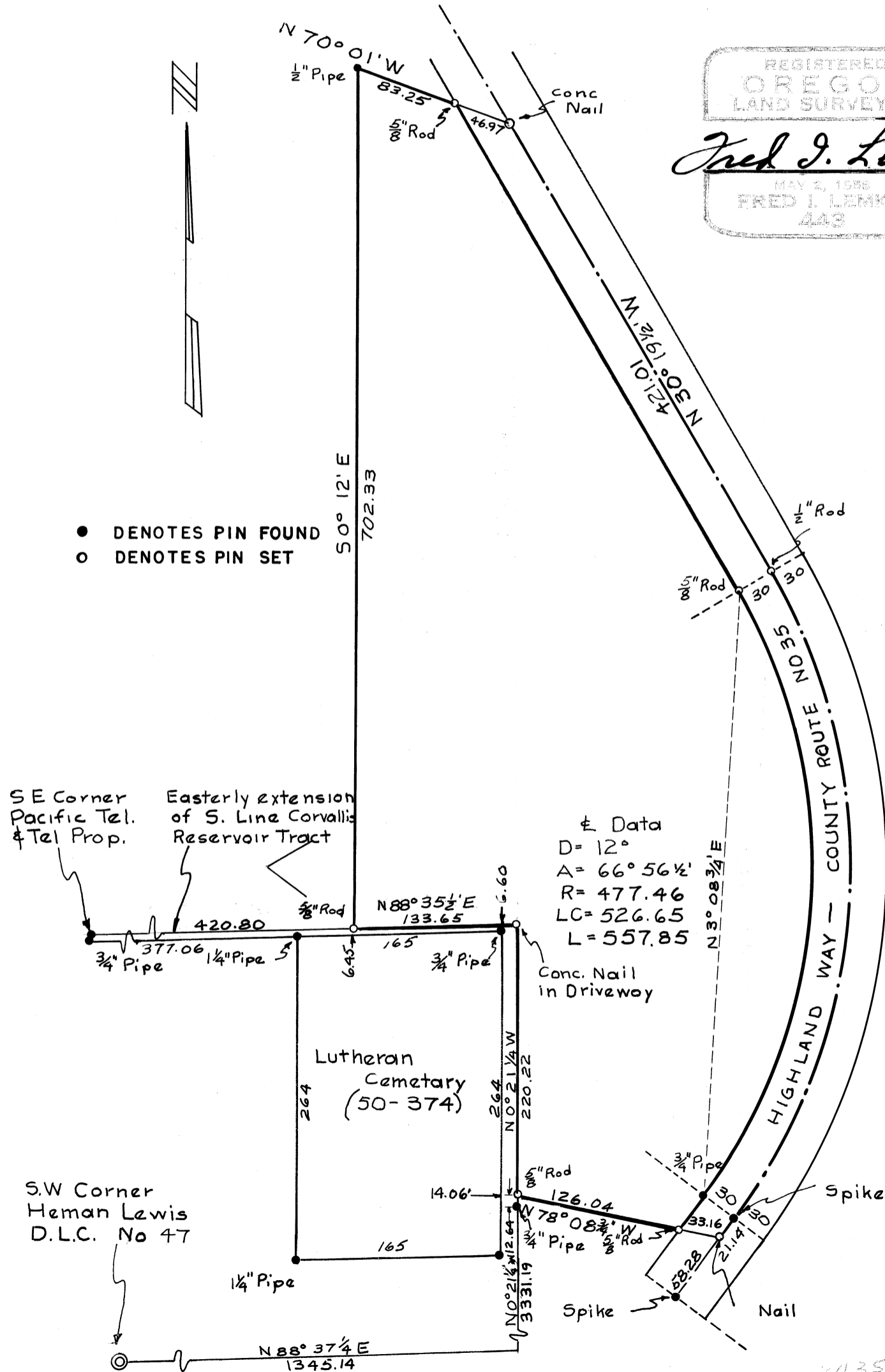
SCALE: 1"=100'

JULY 26, 1960

REGISTERED
OREGON
LAND SURVEYOR

Fred J. Lemke

MAY 2, 1958
FRED J. LEMKE
448



± Data
 D = 12°
 A = 66° 56 1/2'
 R = 477.46
 LC = 526.65
 L = 557.85