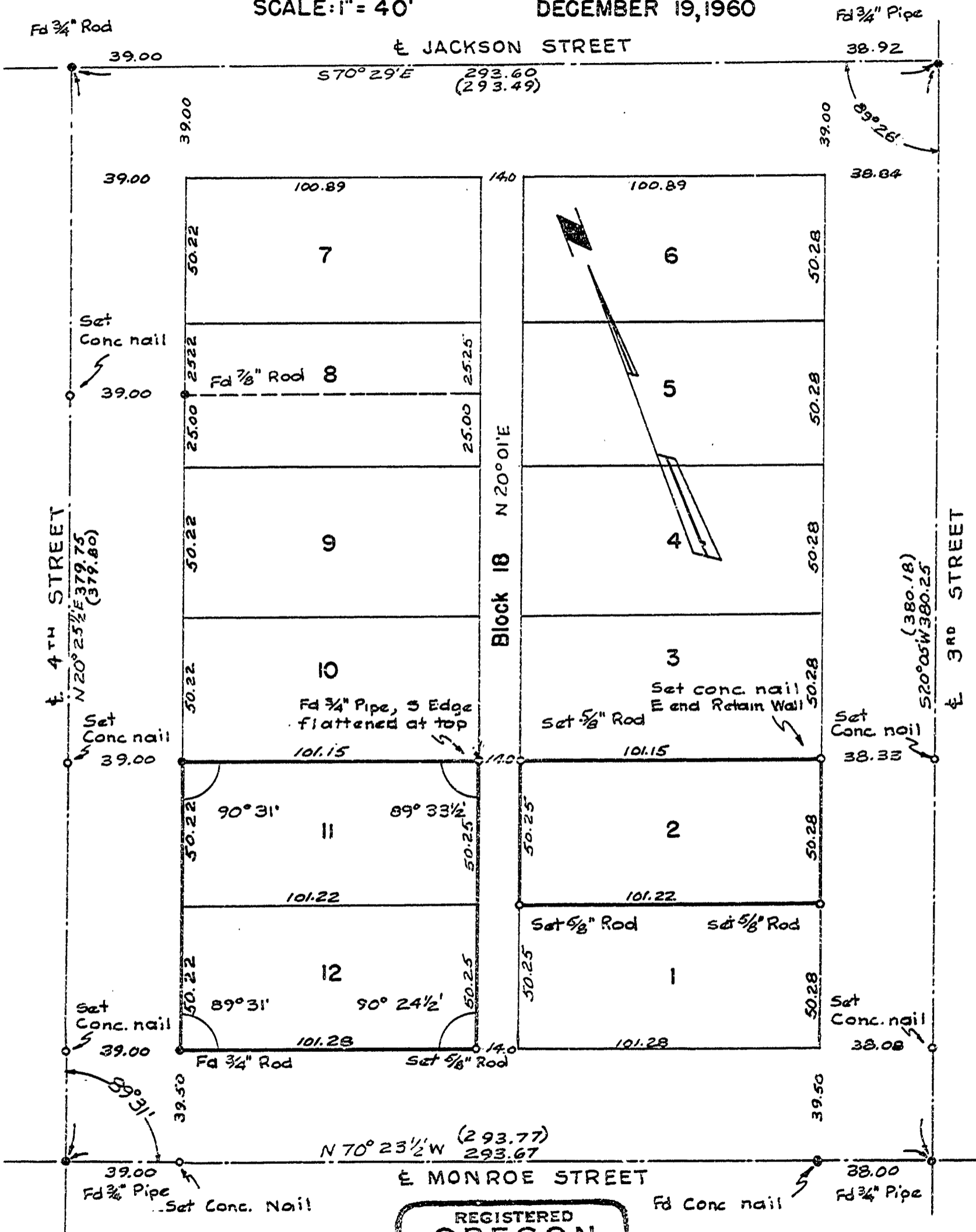


SURVEY FOR U. S. NATIONAL BANK
OF PORTLAND, CORVALLIS BRANCH.
LOT 2, 11, & 12, BLOCK 18,
ORIGINAL TOWNE OF MARYSVILLE.
CORVALLIS, BENTON COUNTY, OREGON

SCALE: 1" = 40'

DECEMBER 19, 1960



REGISTERED
OREGON
LAND SURVEYOR

Fred I. Lemke

MAY 2, 1958
FRED I. LEMKE
443