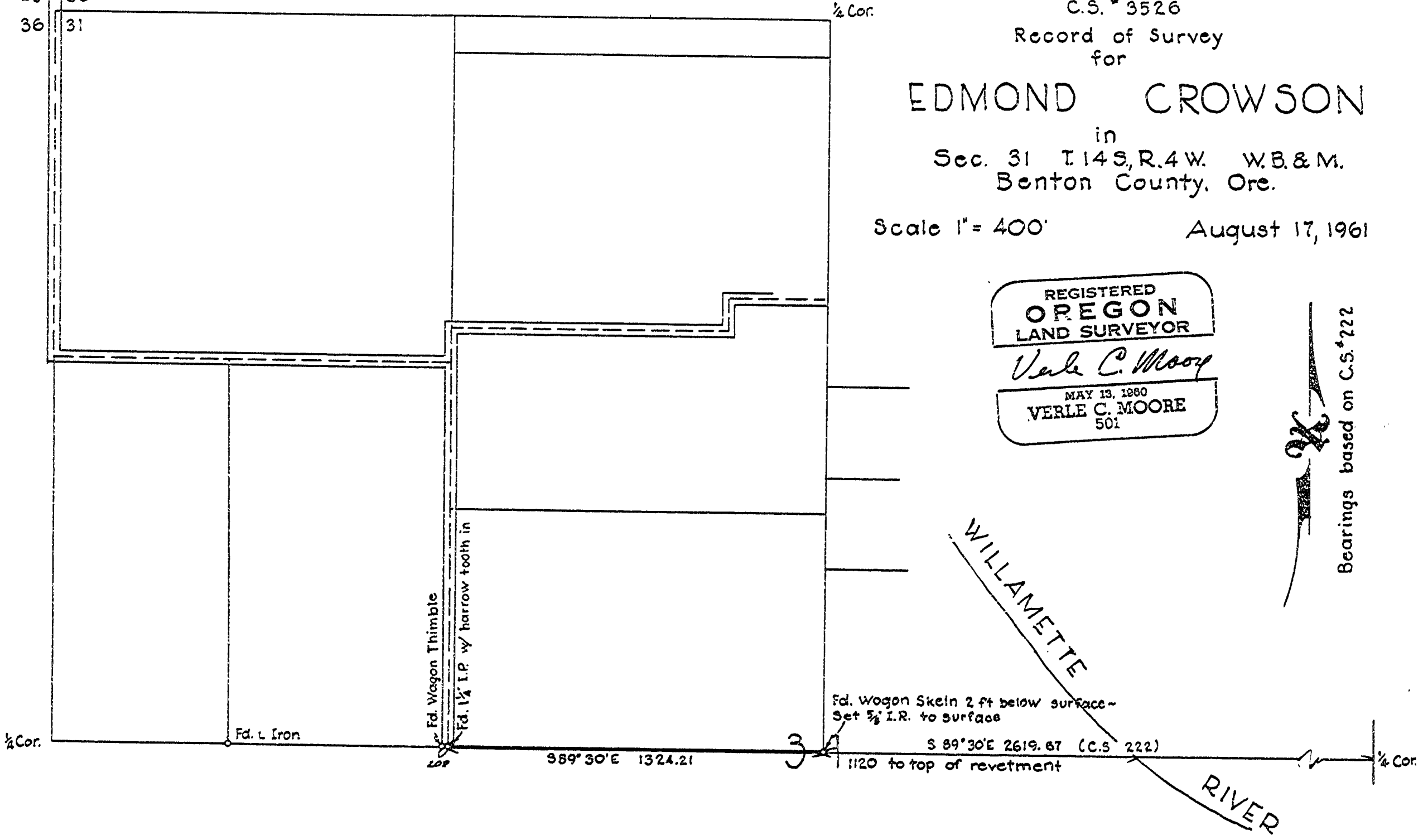


25 30  
36 31



C.S. # 3526  
Record of Survey  
for

EDMOND CROWSON  
in  
Sec. 31 T.14S, R.4W. W.B.&M.  
Benton County, Ore.

Scale 1" = 400' August 17, 1961

REGISTERED  
OREGON  
LAND SURVEYOR

*Verle C. Moore*

MAY 13, 1960  
VERLE C. MOORE  
501

Bearings based on C.S. # 222

WILLAMETTE  
RIVER

F.d. Wagon Skein 2 ft below surface -  
Set 3/8" I.R. to surface

S 89° 30' E 1324.21

S 89° 30' E 2619.67 (C.S. 222)

1120 to top of revetment