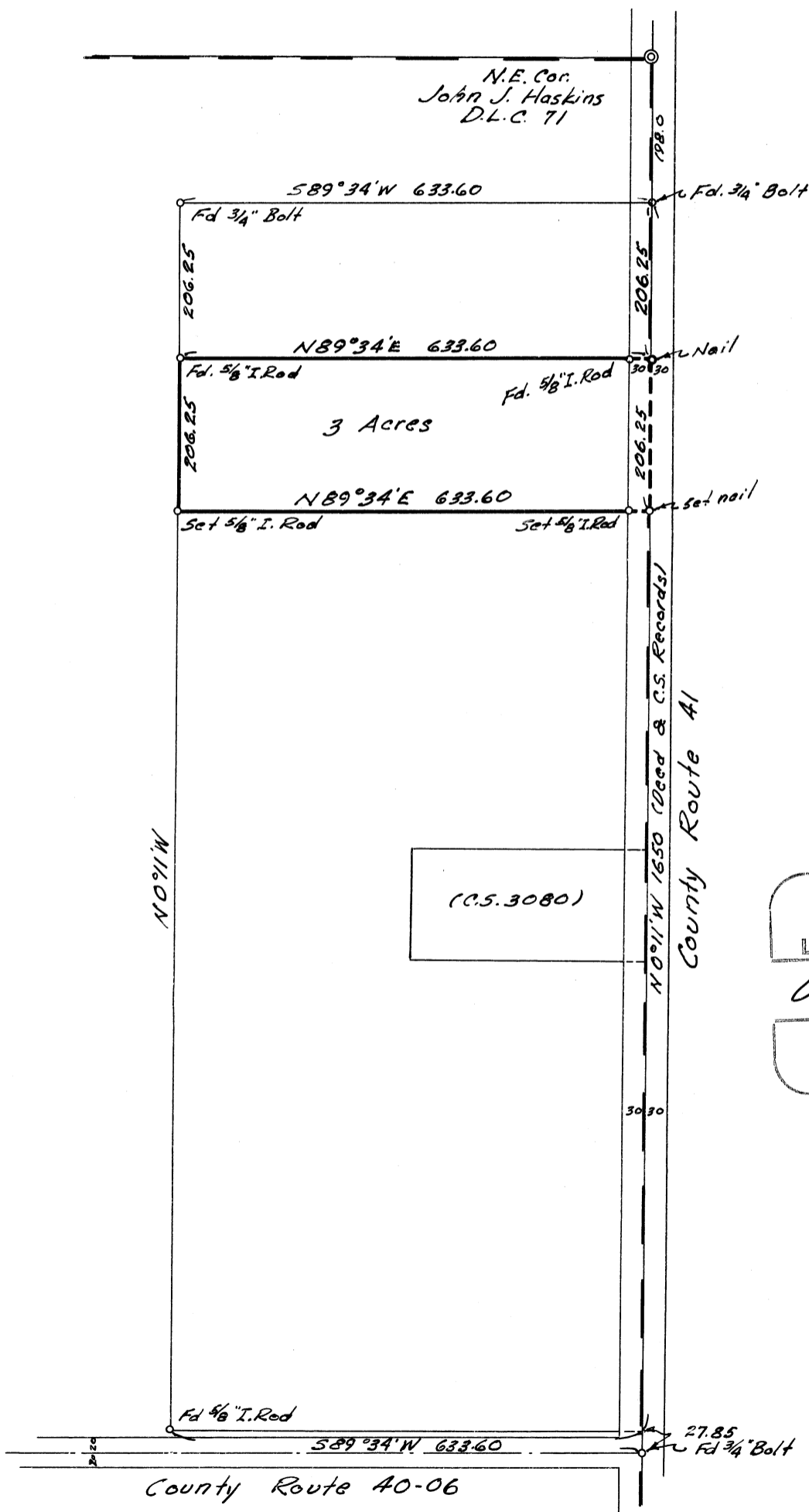


C.S. 3662
 Record of Survey
 for
EARL W. HARMON
 in the
 John J. Haskins D.L.C. 71
 T. 10S., R. 4W. W.M.
 Benton County, Ore.

Scale 1" = 200'

July 7, 1962



*Bearings based on C.S. records
 for the East Line of D.L.C. 71*

REGISTERED
OREGON
 LAND SURVEYOR

Verle C. Moore

MAY 13, 1960
VERLE C. MOORE
 501