

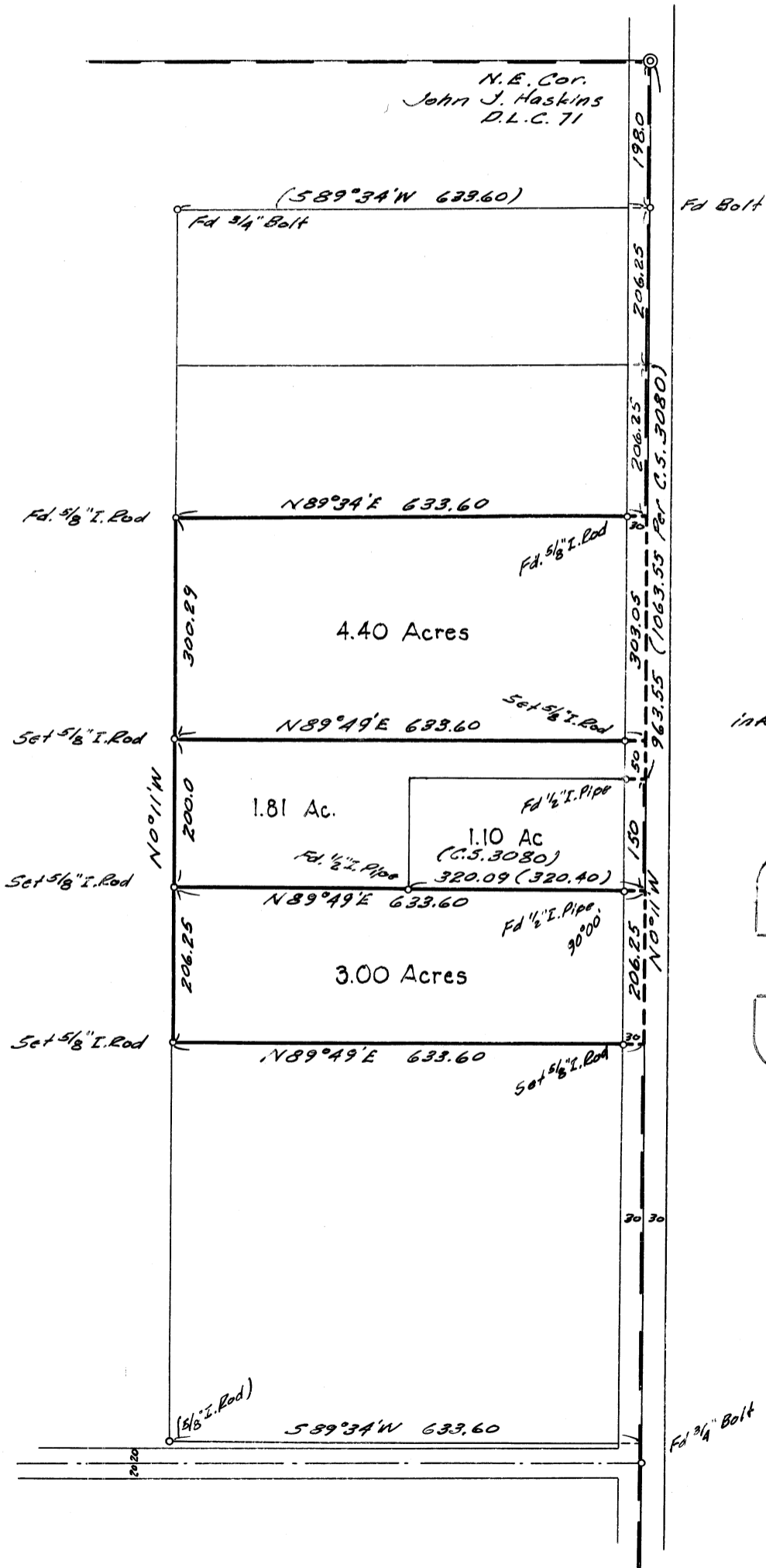
C.S. No 3080

Record of Survey
for
EARL W. HARMON
in the

John J. Haskins D.L.C. 71
T. 10S., R. 4W. W.M.
Benton County, Ore.

Scale 1" = 200'

July 20, 1963



Parentheses denote information from C.S. Records

REGISTERED
OREGON
 LAND SURVEYOR

Verle C. Moore

MAY 13, 1960
VERLE C. MOORE
 501