

3996

CS. 3996
 KENNETH HUMPHREYS
 SEC 28, T.10S., R.4W., W.M.
 5 Beaton County, Oregon
 Scale 1"=200' October, 1964
 Bearing CS. 3839
 B. Osburn Shaw
 O.L.S. #431

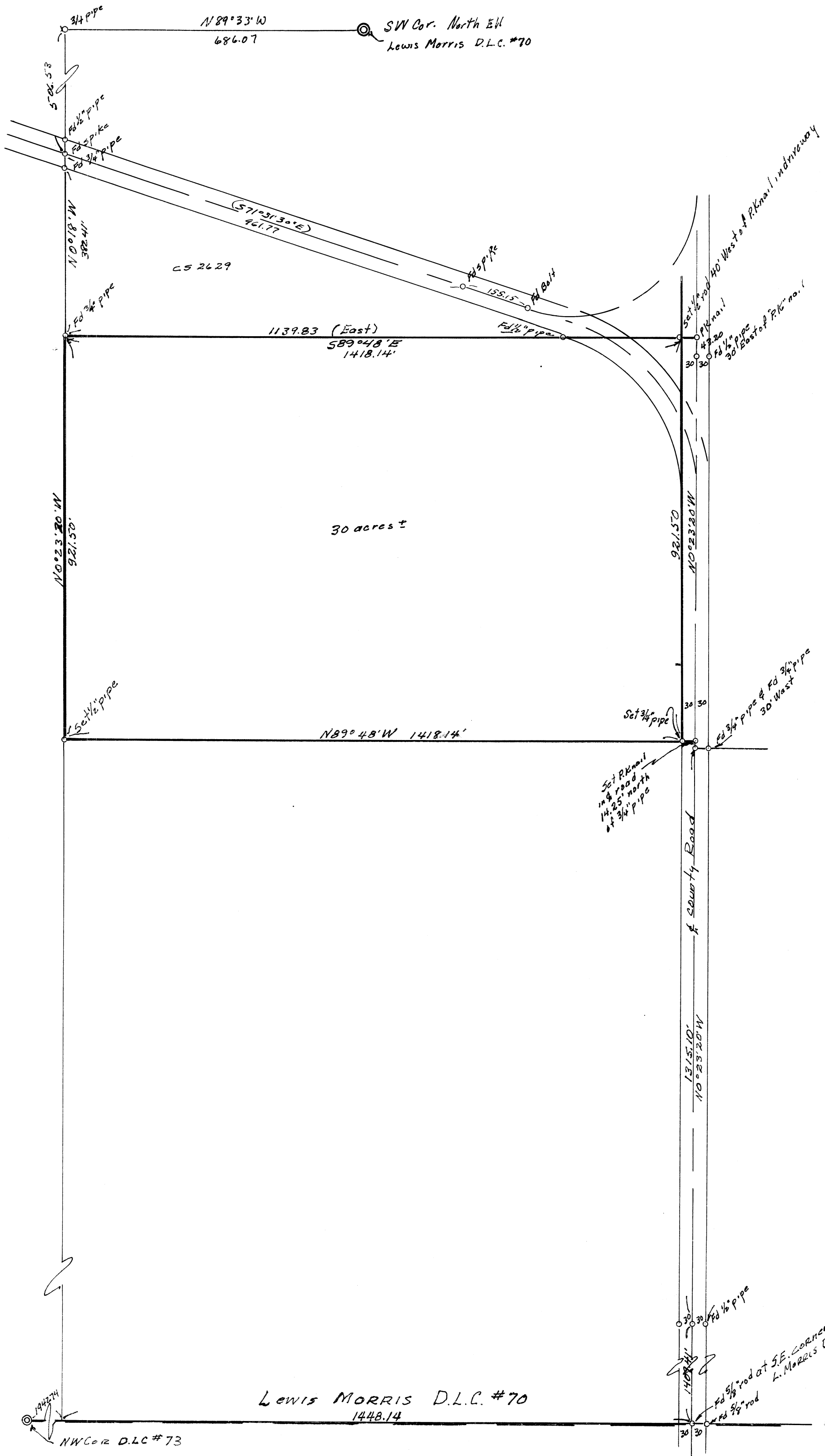
REGISTERED
 OREGON
 LAND SURVEYOR

B. Osburn Shaw

OCTOBER 4, 1967
 B. OSBURN SHAW
 431



3996



3996