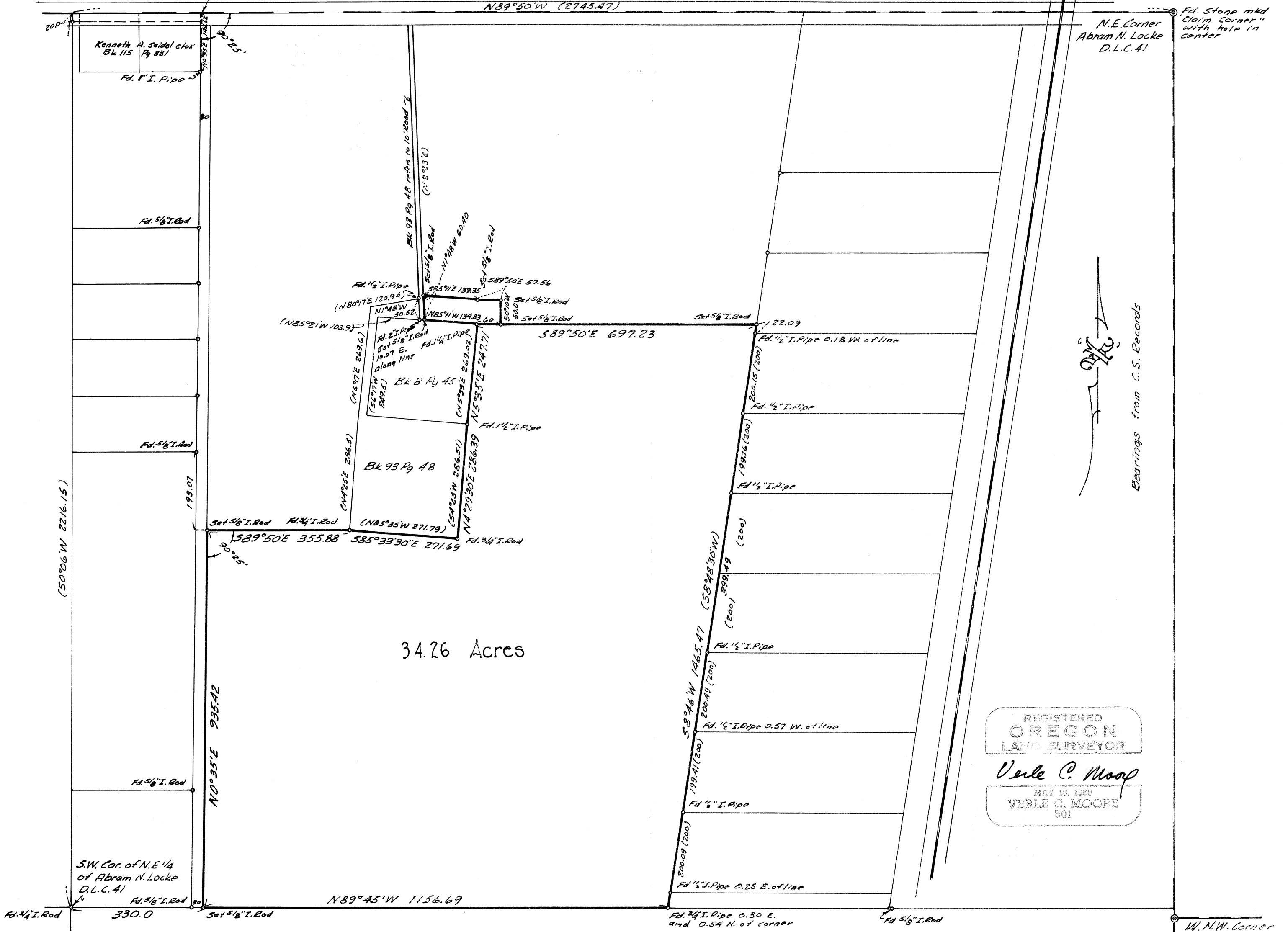


C.S. 4115
 Record of Survey
 for
DAVID MACPHERSON
 in the Abram N. Locke D.L.C. 41 T.11S., R.4W. W.M. Benton County, Oregon
 Scale 1" = 200'

Parenteses denote information from
 C.S. Records or deeds

July 13, 1965



34.26 Acres

REGISTERED
OREGON
 LAND SURVEYOR
Verle C. Moop
 MAY 19, 1960
VERLE C. MOOPE
 501

Verle C. Moop
 Bearings from C.S. Records

N.E. Corner
 Abram N. Locke
 D.L.C. 41
 Fd. Stone mkd
 "Claim Corner"
 with hole in
 center

W.N.W. Corner
 W.H. Elliott
 D.L.C. 40