

Section 34 T10S, R5W.  
Section 4 T11S, R5W, W.M.

C.S. 4154  
**Tract Survey For B. Starker**  
section 4 T11S, R5W, W.M. scale 1"=200ft  
July 1965 Meridian from C.S. 287

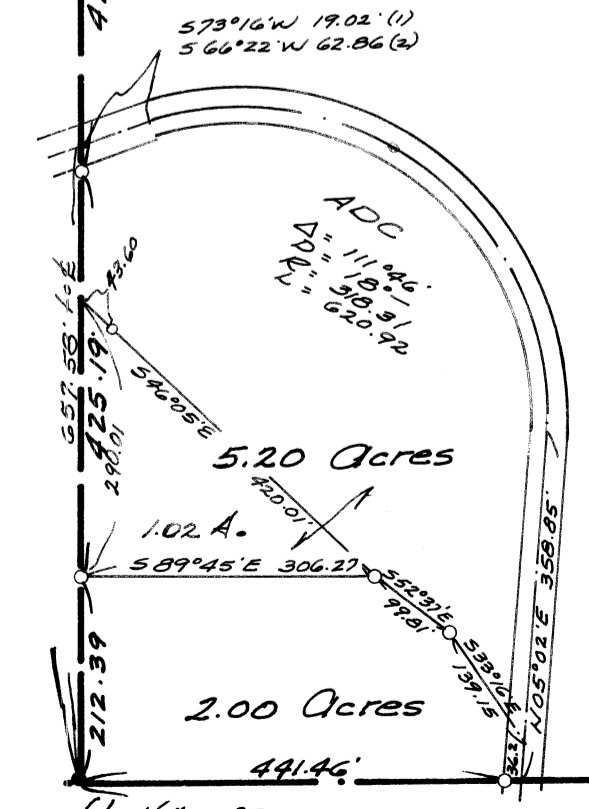
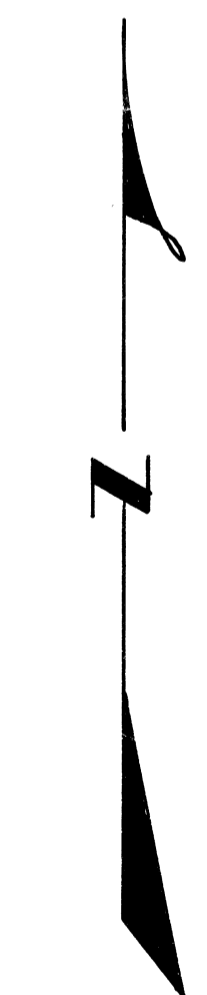
- o denotes 3/8"x30" rods set in rd.
- o denotes 1"x30" pipes set
- denotes monuments found
- ( ) denotes distances & bry. of record



Sta.	Mon.	Bearing	Dist.	S.T.	Ext. off. Bl. off. H.	Reference
A-60	3/8"	S 22° 07' 10" W	359.67	50'	1.0	
E-1	"	S 31° 52' 55" W	132.13	"	"	
E-2	"	S 48° 40' 30" W	357.99	100	"	
E-3	"	S 52° 01' 25" W	198.90	80	6.0	
E-4	"	S 84° 09' 20" W	124.65	120	11.0	
E-5	"	S 43° 39' 50" W	245.98	80	4.0	
E-6	"	S 70° 56' 20" W	234.00	60	9.0	
E-7	"	S 43° 29' 45" W	173.97	40	5.0	
E-8	"	S 64° 41' 30" W	267.44	40	1.0	
E-9	"	S 84° 17' 00" W	134.27	50	3.0	
E-10	"	N 80° 20' 15" W	154.12	40	2.0	
E-11	"	S 84° 09' 35" W	359.82	30	5.0	
E-12	"	S 89° 19' 35" W	144.27	100	0.0	
E-13	"	S 74° 41' 30" W	583.14	40	3.0	28.0 281
E-14	"	S 60° 21' —" W	450.90	40	20.0	55.27 5.67
E-15	"			100	20.0	16 110a

N 89° 45' W 1/2" pipe  
1360.05 (1358.32)  
N 2809.33 E 35.90  
1/4 stone set for N.W. Cor. Sec. 4 (X on top) I.B.T. 552° E 290.4 ft

N 1443.82 E 21.04



1/2" pipe set for W 1/4 Cor. in C.S. 287  
N 0.00 E 0.00

S 89° 45' E 1737.46'

1/2" pipe E of Section as per C.S. 287

4154