

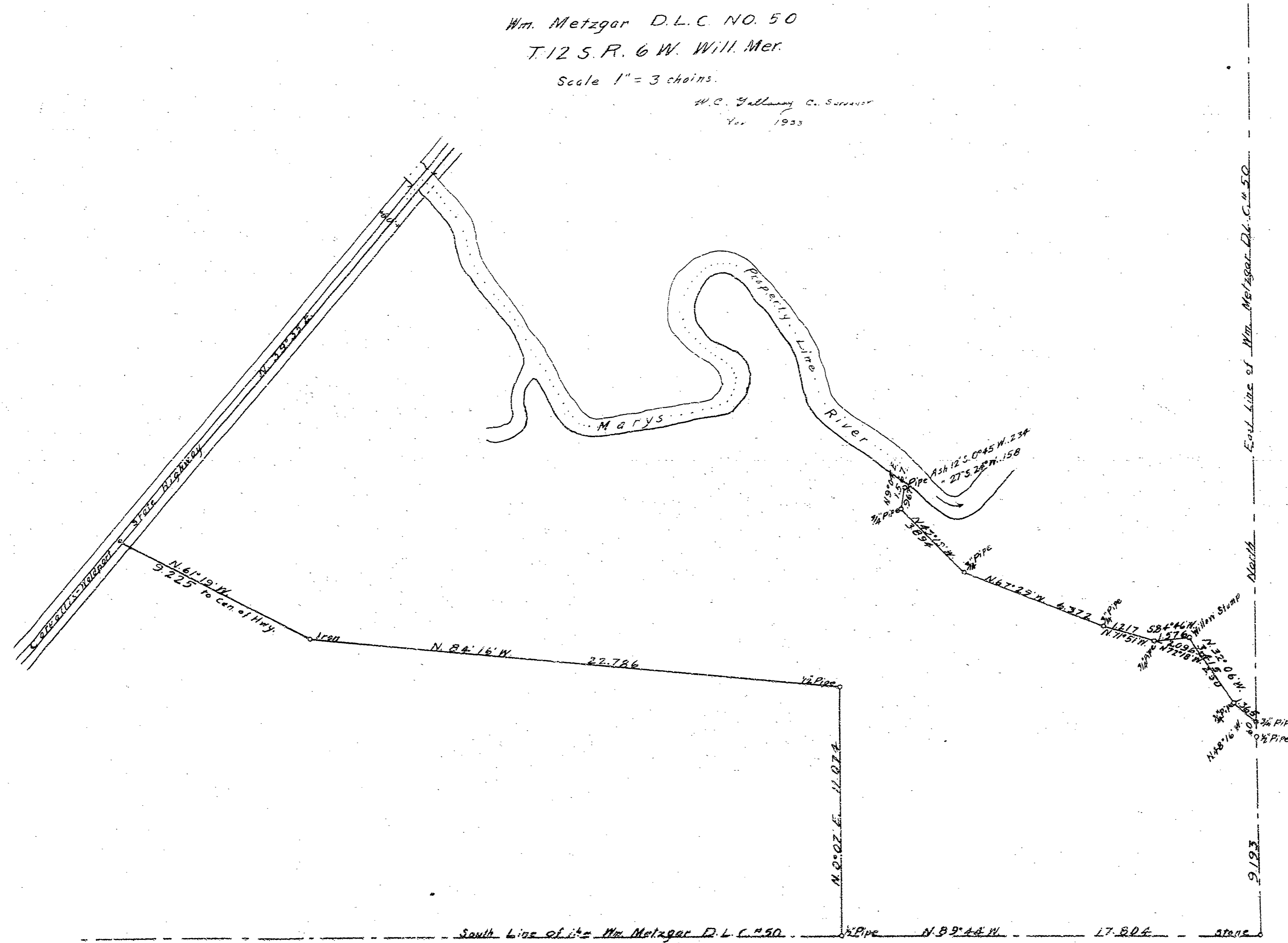
COUNTY SURVEY NO. 185

Wm. Metzgar D.L.C. NO. 50

T. 12 S. R. 6 W. Will. Mer.

Scale 1" = 3 chains.

H.C. Gallaway C. Surveyor
Year 1923



Book #16

WYATT
WYATT BOOK
363

2

#416

C.S. #185 For G.W. McInosh

Boq. at a store the S.F. cor.

of Wm Metzgars Cl # 50

To 12 S. T. 6 W. of W.M.

N. 101 of cor.

W. 126

+ 16 to R.

8492 + 60 to cor.

Set 1/2 gal. pipe

There are 12 N. 5.50 W. 299 Cls.

549 N. 770 W. 117 "

Bocks 20

N. 89.5 T. W.

correct W. 13 "

Flight 9' "

3093

changed in

8.046

8.046

5.200

6.616

8.949

+ 0.07

ST. KING N. of N. 117

Jan. 2, 1914

Albert Schröder chainman

N.W. cor. of Daniel Henderson & Co

orig. cor. N.E. 1/4 set 3/4 gal. pipe

Oak 16" 889' E. 727 cfs.

" 19" 5.10 W. 350 " 5th.

" Post N. 5.15 W. 244 "

" " 7" N. 46" W. 067 "

101

8492

8593

8521

182

7.987

6.690

3.093

17.796

8.000

5.439

4.138

6.598

8.949

47.307

17.77

11.511

17.796

17.796

17.796

17.796

17.796

17.796

17.796

17.796

17.796

17.796

17.796

17.796

