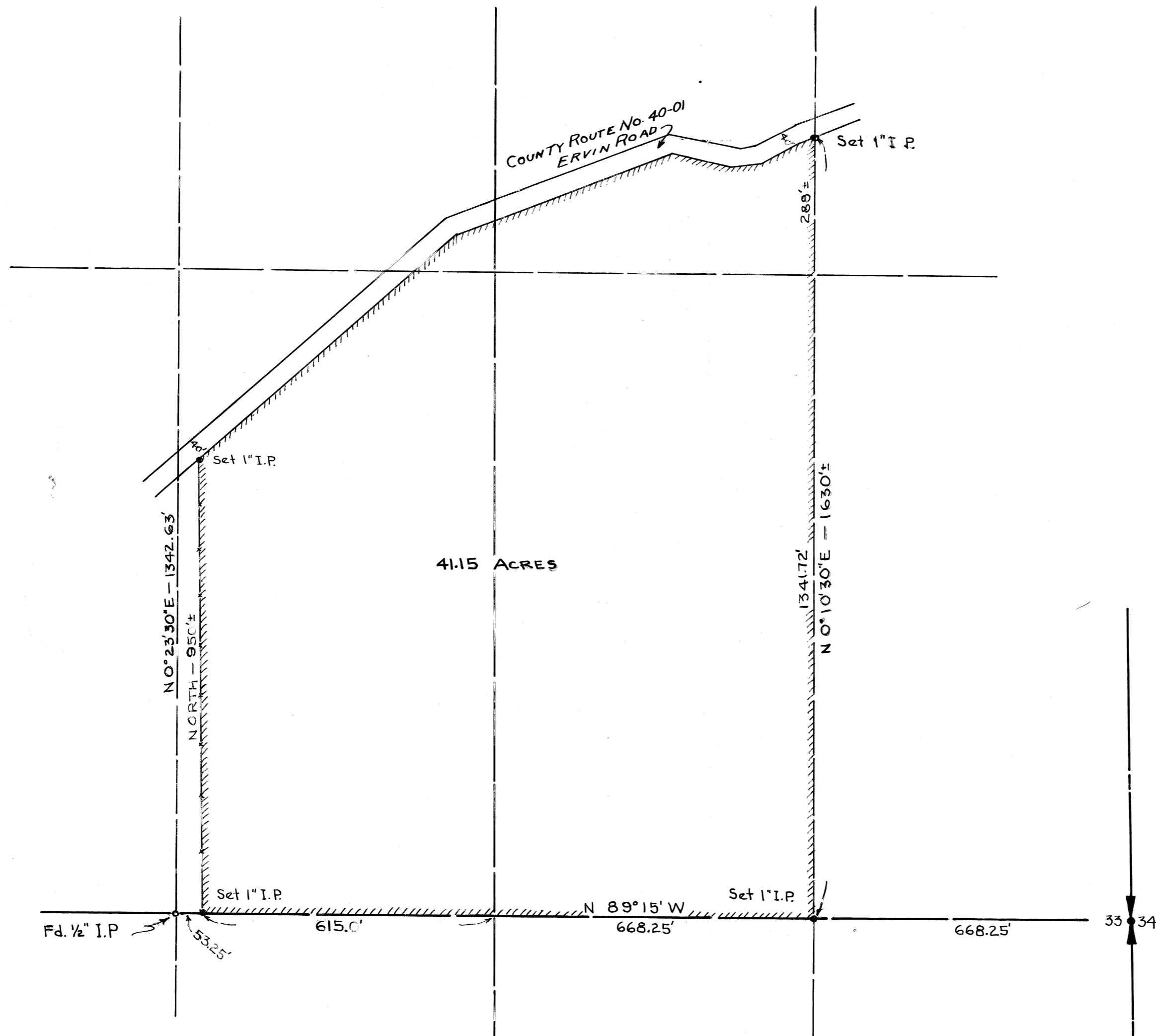


4290

4290

4290



C 5 4290
 Survey For
HAROLD KRAUSE
 In Section 33
 Township 12 South, Range 6 West
 of Willamette Meridian
 Benton County, Oregon
 Scale: 1" = 200' June 15, 1965
df



Donald J. Johnston

NOTE: BEARINGS BASED ON BENTON COUNTY ENGINEER'S DATUM.