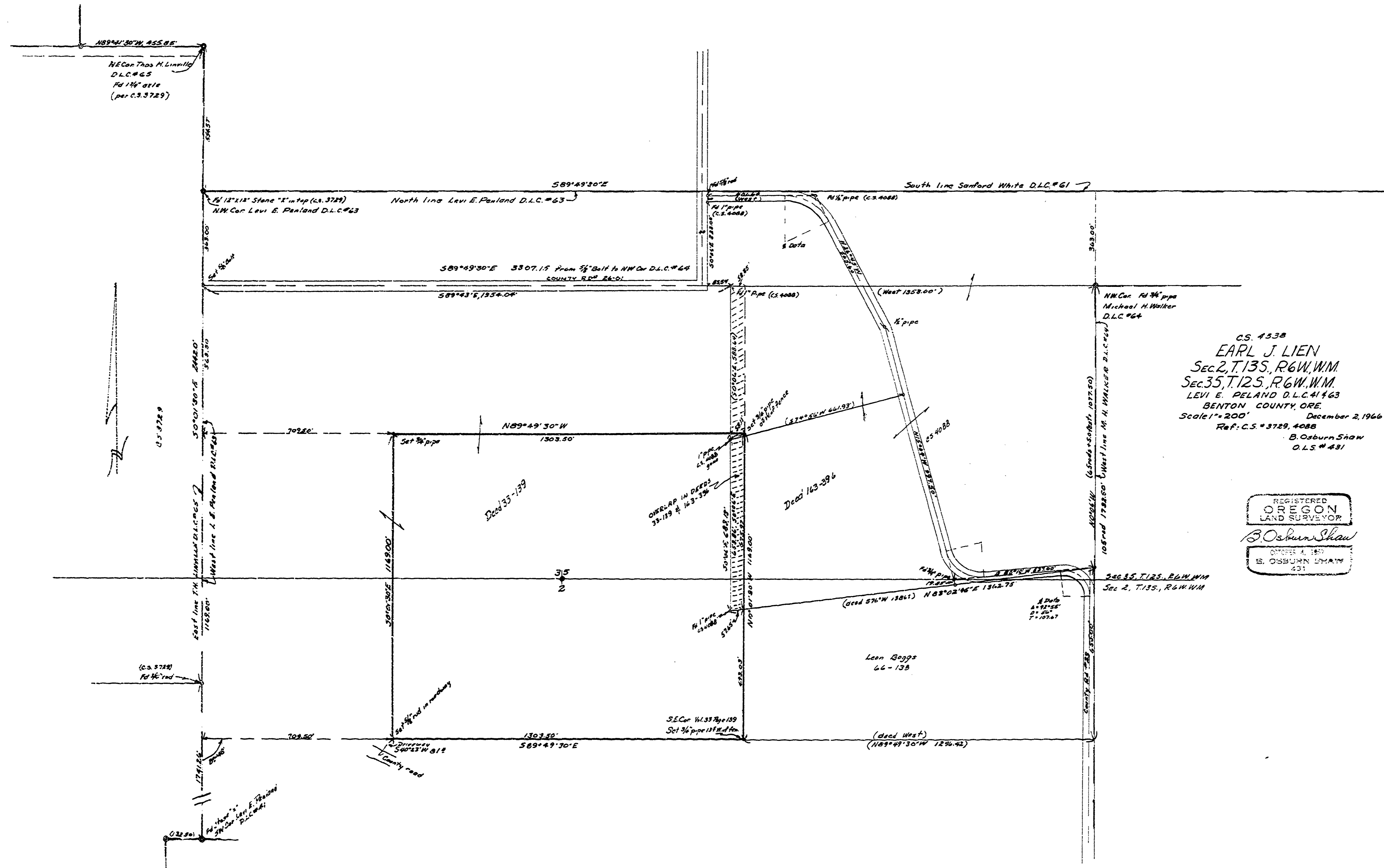


4338



C.S. 4338  
 EARL J. LIEN  
 Sec 2, T. 13S., R. 6W., W.M.  
 Sec 35, T. 12S., R. 6W., W.M.  
 LEVI E. PELAND D.L.C. #1463  
 BENTON COUNTY, ORE.  
 Scale 1" = 200'  
 Ref. C.S. # 3729, 4088  
 B. Osburn Shaw  
 O.L.S. # 481

REGISTERED  
 OREGON  
 LAND SURVEYOR  
 B. Osburn Shaw  
 OCTOBER 4, 1957  
 B. OSBURN SHAW  
 431

R 20 31 6