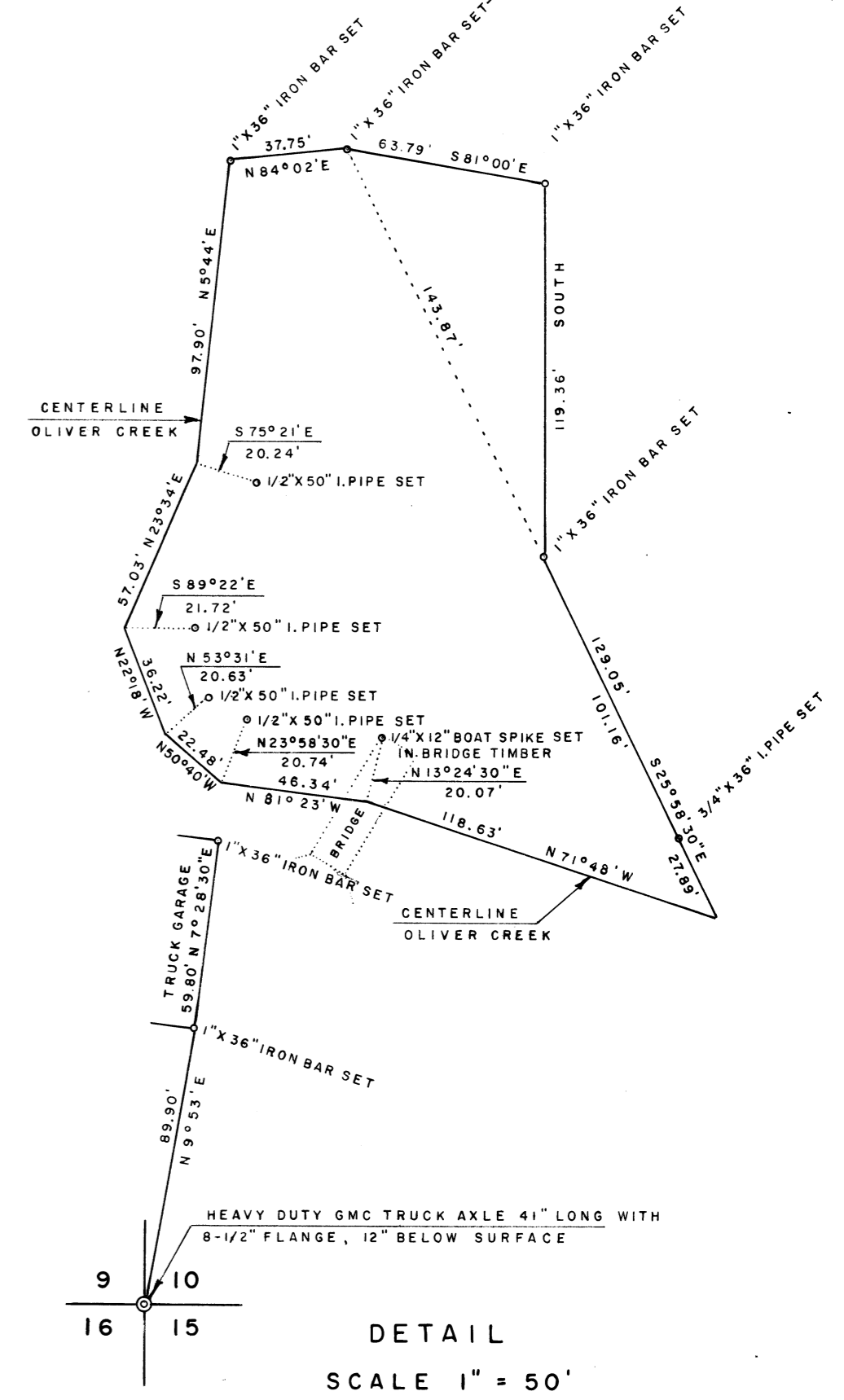


MILL SITES AS SURVEYED BY W.C. GALLOWAY, COUNTY SURVEY NUMBER 336. BASE BEARINGS

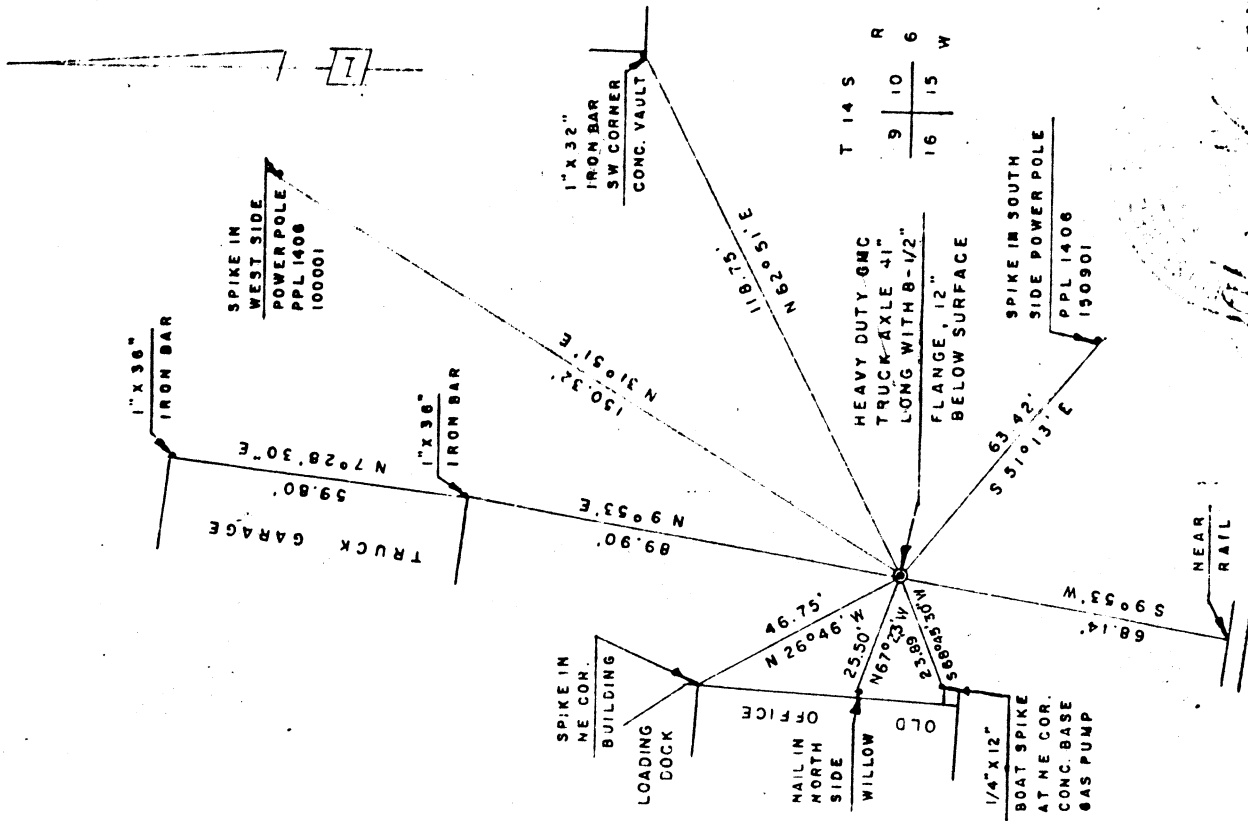
SCALE 1" = 100'

NOTE: ORIGINAL NORTHEAST CORNER AS SET (FROM NOTES) BY W.C. GALLOWAY, IN COUNTY SURVEY 336. POSITION - 368.55' NORTH AND 63.21' EAST OF SECTION COR.



C 5 4356

R. WILSON HUTCHISON, P.E. CONSULTING ENGINEER 355 WALNUT LANE, EUGENE, OREGON, 97401 AREA CODE 503, 344-4144	
PROJECT	PROPERTY SURVEY
CLIENT	RALPH HULL
LOCATION	SECTIONS 9, 10 AND 15, T 14 S, R 6 W, W.M.
SCALE	AS SHOWN
FEBRUARY 2, 1967	



CORNER TO SECTIONS 9, 10, 15 AND 16; T 14 S. R 6 W, N. N.  
 RESET AND REWITNESSED BY R. WILSON HUTCHISON, P.E. JANUARY 7, 1967

FOUND 1" X 32" IRON ROD SET BY W. C. GALLOWAY IN OCTOBER 1938  
 ROD WAS BENT DURING RECOVERY OPERATION. IN PLACE OF ROD -

SET HEAVY DUTY GMC TRUCK AXLE 41" LONG AND HAVING AN 3 1/2" FLANGE.  
 FLANGE 12" BELOW SURFACE OF GRAVEL

1" X 36" IRON BAR	N 9° 53' 00" E	89.90'
SPIKE IN POWER POLE, PFL 1406, 100001	N 31° 51' 00" E	150.32'
1" X 32" IRON BAR, SE CORNER CONCRETE VAULT	N 32° 51' 00" E	116.75'
SPIKE IN POWER POLE, PFL 1406, 150001	S 51° 15' 00" E	63.42'
NEAR RAIL, SOUTH OF COUNTY ROAD	S 9° 55' 00" W	66.14'
1/2" X 12" BOAT SPIKE, NE COR. CONC. BASE GASPUMP	S 68° 45' 30" W	25.89'
NAIL IN NORTH SIDE OF WILLOW	N 67° 23' 00" W	25.50'
SPIKE IN NE CORNER BUILDING, (OLD OFFICE)	N 26° 46' 00" W	46.75'

WITNESS: FRANCIS INGRAN  
 WILFRED DEHENT  
 KENNETH WILLIAMS  
 WILLIAM COPELAND  
 RALPH HULL

*R. Wilson Hutchison*

SURVEY FOR HULL-OAKES

ORIGINAL RECEIVED FROM ARNIE BRUBAKER 3-3-80