

C.S. 4414  
**DARREL D. CLEVELAND**

SEC. 27, T. 10S., R. 4W., W.M.

JOHN J. HASKINS D.L.C. # 71

Benton County, Oregon

Scale: 1" = 100' 23 June 1967

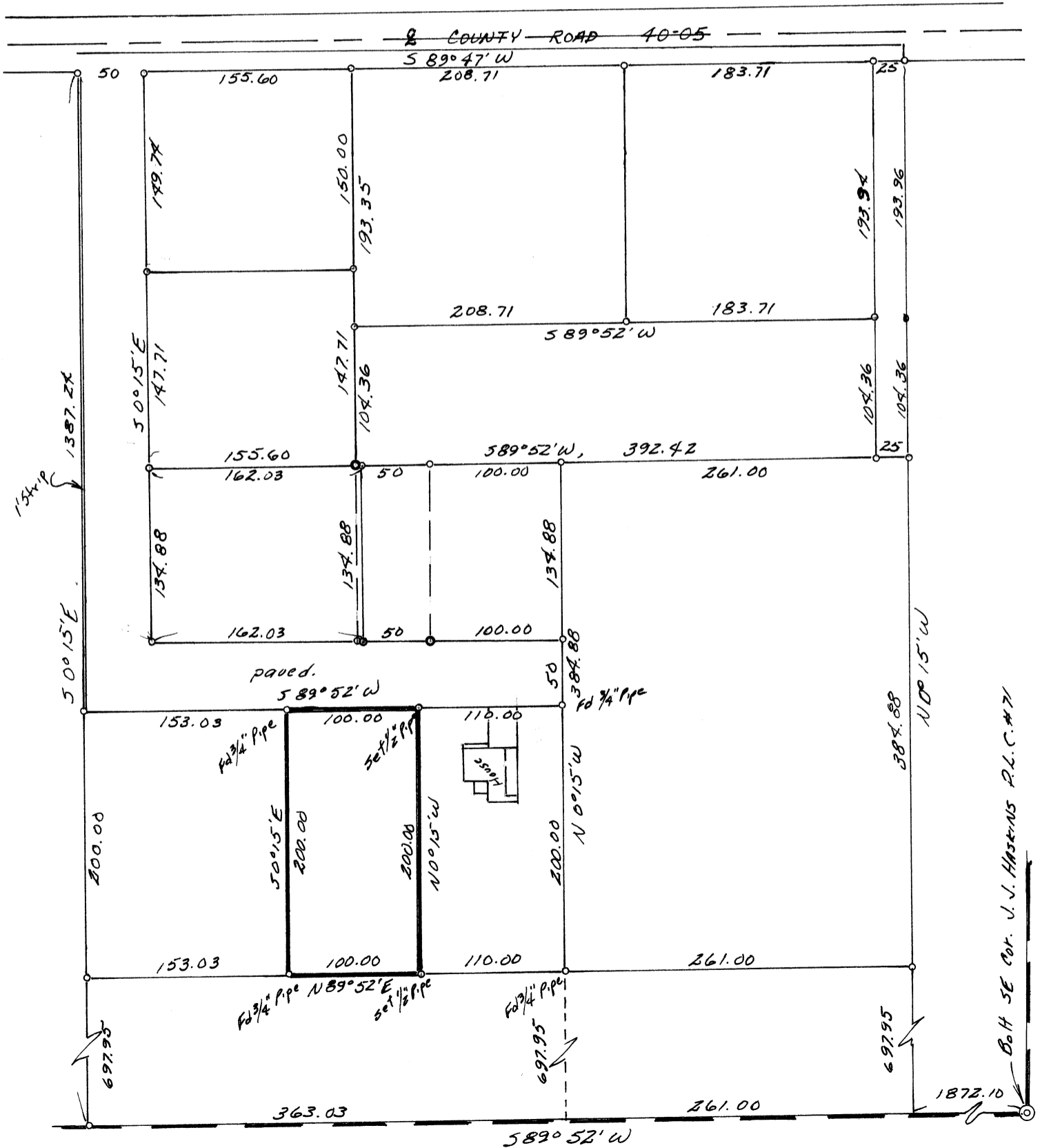
Ref: C.S. 3646

B. Osburn Shaw

O.L.S. # 431



*B. Osburn Shaw*



Bolt SE Cor. J. J. HASKINS P.L.C. # 71