

C 5 4492

SURVEY FOR  
**DAVID BALLARD**

IN LOTS 12 THRU 22, BLK. 27

PACIFIC ADD. TO MONROE,

BENTON CO., OREGON

SCALE 1" = 50' JAN. 15, 1968

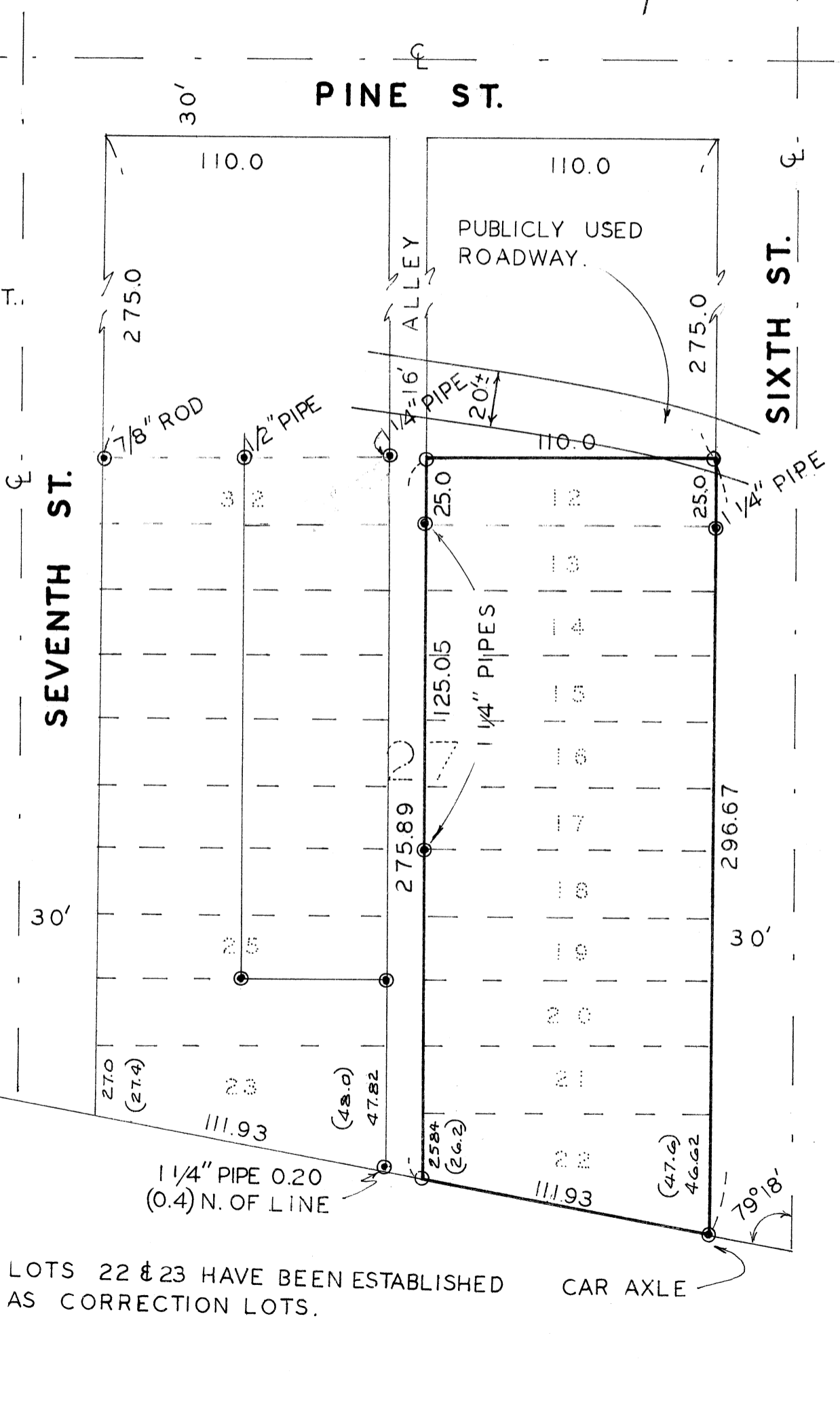
REGISTERED  
OREGON  
LAND SURVEYOR

*R. S. Castleberry*

JULY 9, 1965  
R. S. Castleberry  
684



- MONUMENTS FD.
- 1/2" IRON ROD SET.
- ( ) DISTANCE OF RECORD.



1/4 COR.  $\frac{28}{33}$   
NOT FD.

103.60

1 1/4" PIPE

FD. STONE  
LAYING ON ITS  
SIDE.

LOTS 22 & 23 HAVE BEEN ESTABLISHED  
AS CORRECTION LOTS.

CAR AXLE