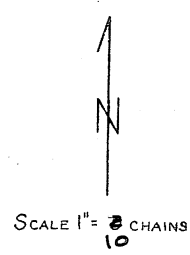


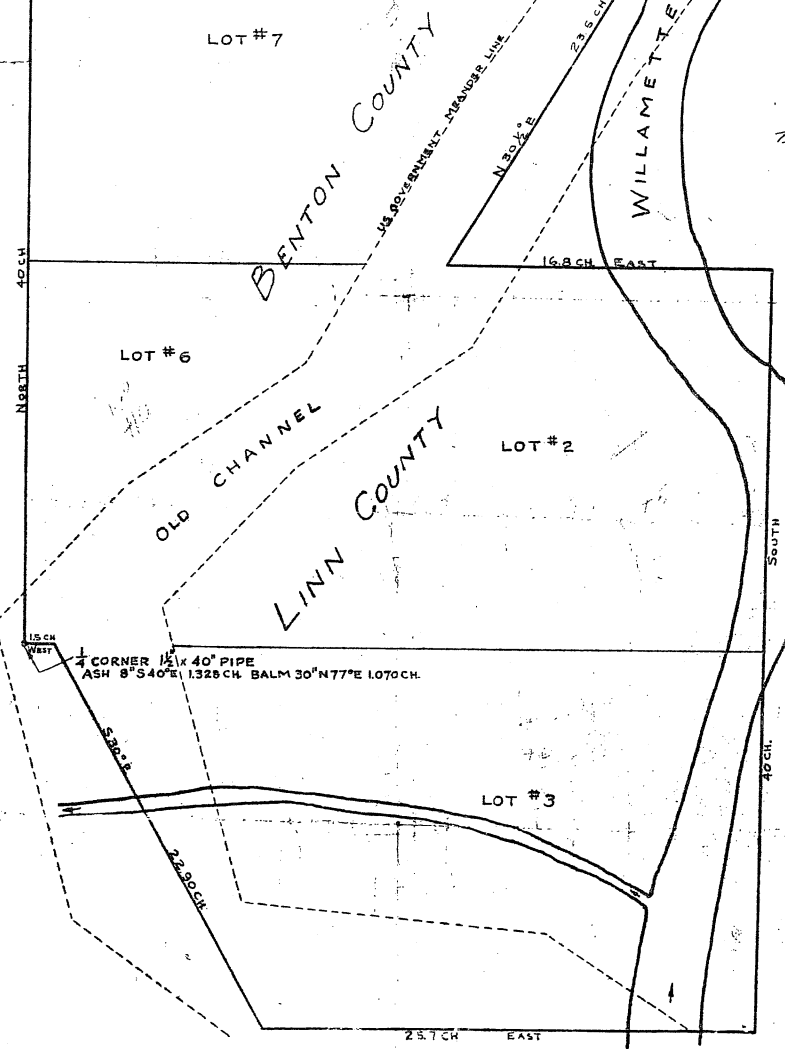
TRACT #27 3... #475



T13S R4W  
LINN & BENTON COS. ORE.  
SURVEY MADE FOR C. FISK  
SEPTEMBER 17, 1937.

WC. 5'x5'x24" STAKE  
1156 CH. NORTH  
FIR 24° 34'53" W 137 CH  
FIR 22° N60° 3' W 365"  
FIR 22° N184° W 390"  
OAK 6° 57' 3" W 186"

13 18  
24 19  
19.54 CH. EAST



BENTON COUNTY

LINN COUNTY



CORNER 1 1/2" x 40" PIPE  
ASH 8° 54' 0" E 1.328 CH. BALM 30° N 77° E 1070 CH.