

C.S. # 482

See notes in file

F.B. 18-19

19

FB 18.

Miscellaneous C.S. For

beg. at bolt the S.W. cor. of  
mill property in Vail Peer Ch  
Tp. 10 S. R 6 W.  
North

#482

.535	to 3" 1/2 I pin
2,410	in road
2045	10 3/4 I pin
3364	3 NT.
1098	1 NT
205	2 NT

N. 42° 09' W.

10 3/4 I pin

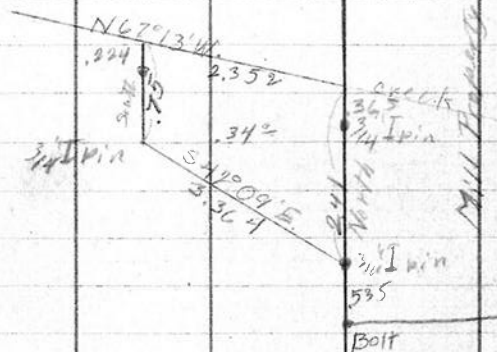
3364

1098

205

North

.526	10 3/4 I pin
77	in creek



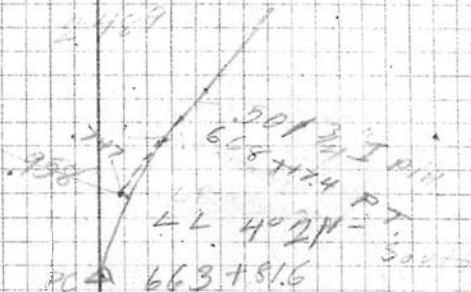
I. Eddy

Nov. 17, 1914.

2410
2045
365

221
800
1180

5 1/2"



750
526
224

3315

664
186

5 1/8"

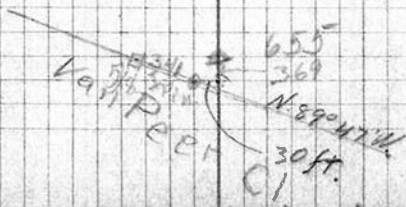
3756

660
378

5 1/8"

3314

448
658



20 Private Road For BA  
 Beginning at S.W. cor.  
 of Mill property

1	S. 7°16'E.	8498
2		3501
3	S. 1°55'E.	4631
4	S. 6°35'W.	7206
5	S. 10°6'W.	2738

Lyday

S. line of Mill Property  
 used as East

26874  
 60  
 161244  
 161244  
 1772584

13.900  
 12.299  
 701

8498  
 3501  
 4631  
 7206  
 2738  
 26874

26874  
 4545

134370  
 107496  
 134370  
 107496  
 -122142330