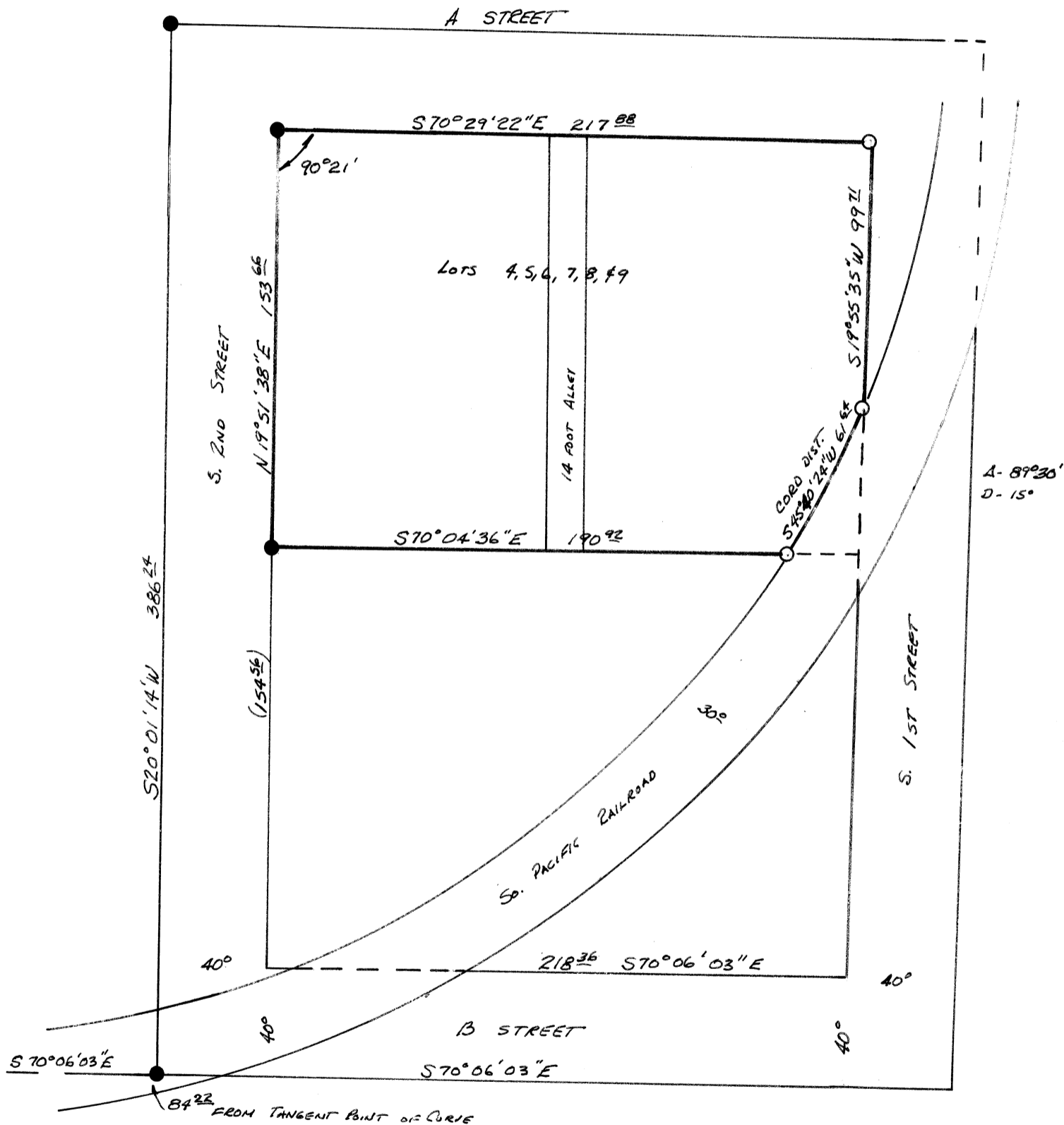
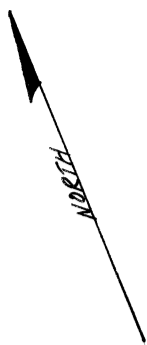


SURVEY: For John Ash BLOCK A  
Lots 2, 3, 4, 5, 6 & 7, <sup>A</sup>Averys Addition  
Corvallis, Benton County, Oregon  
December, 1969  
Scale: 1 inch = 50 feet  
Bearings from solar observation



- CORNERS FOUND
- CORNERS SET

REGISTERED  
OREGON  
LAND SURVEYOR

*Tom O. McCullough*

JULY 10, 1964  
TOM O. MCCULLOUGH  
650