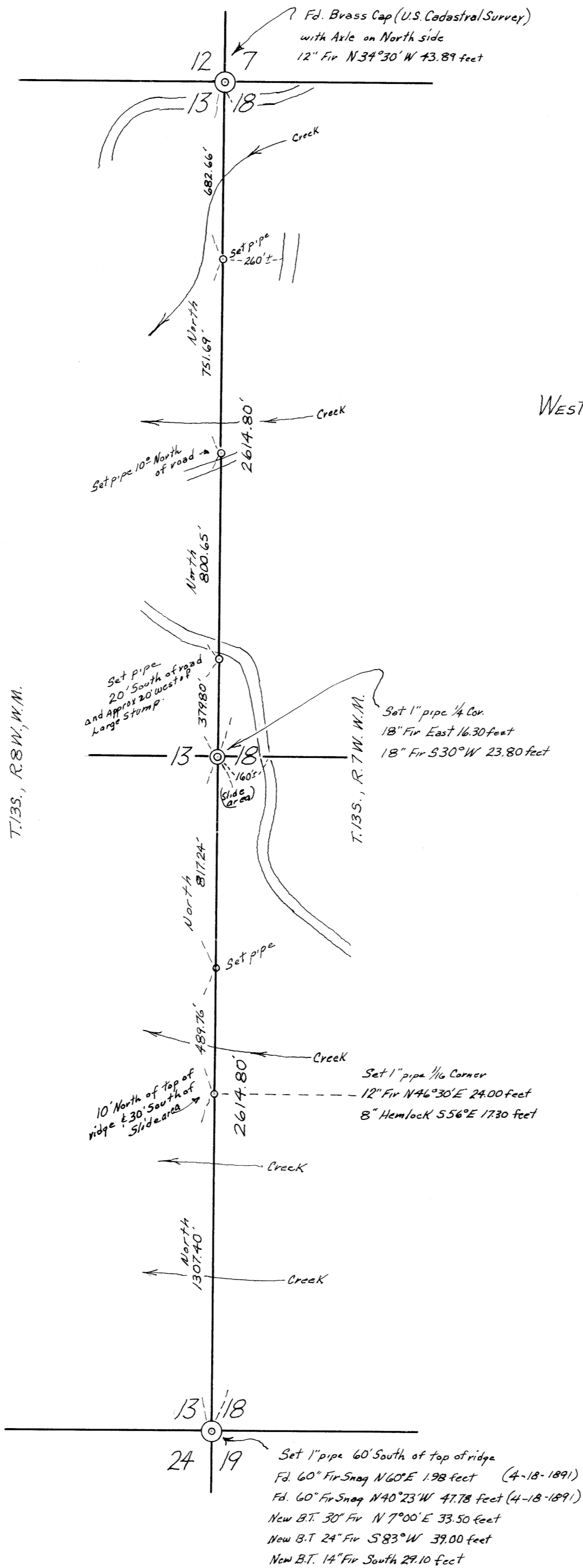


4852

4852



4852

BRUCE STARKER

West Boundary of Sec. 18, T.13S, R.7W, W.M.

BENTON COUNTY, OREGON

SCALE 1" = 400' NOVEMBER 26, 1969

B. OSBURN SHAW

O.L.S. #431

REGISTERED
OREGON
LAND SURVEYOR

B. Osburn Shaw

OCTOBER 4, 1957
B. OSBURN SHAW
431



Note: ran Transit chain Traverse
set pipes offsets of traverse.

B. Osburn Shaw

4852