

4869

COUNTRY ESTATES, INC.

Sec. 1, T. 11S., R. 5W., W. 1M.

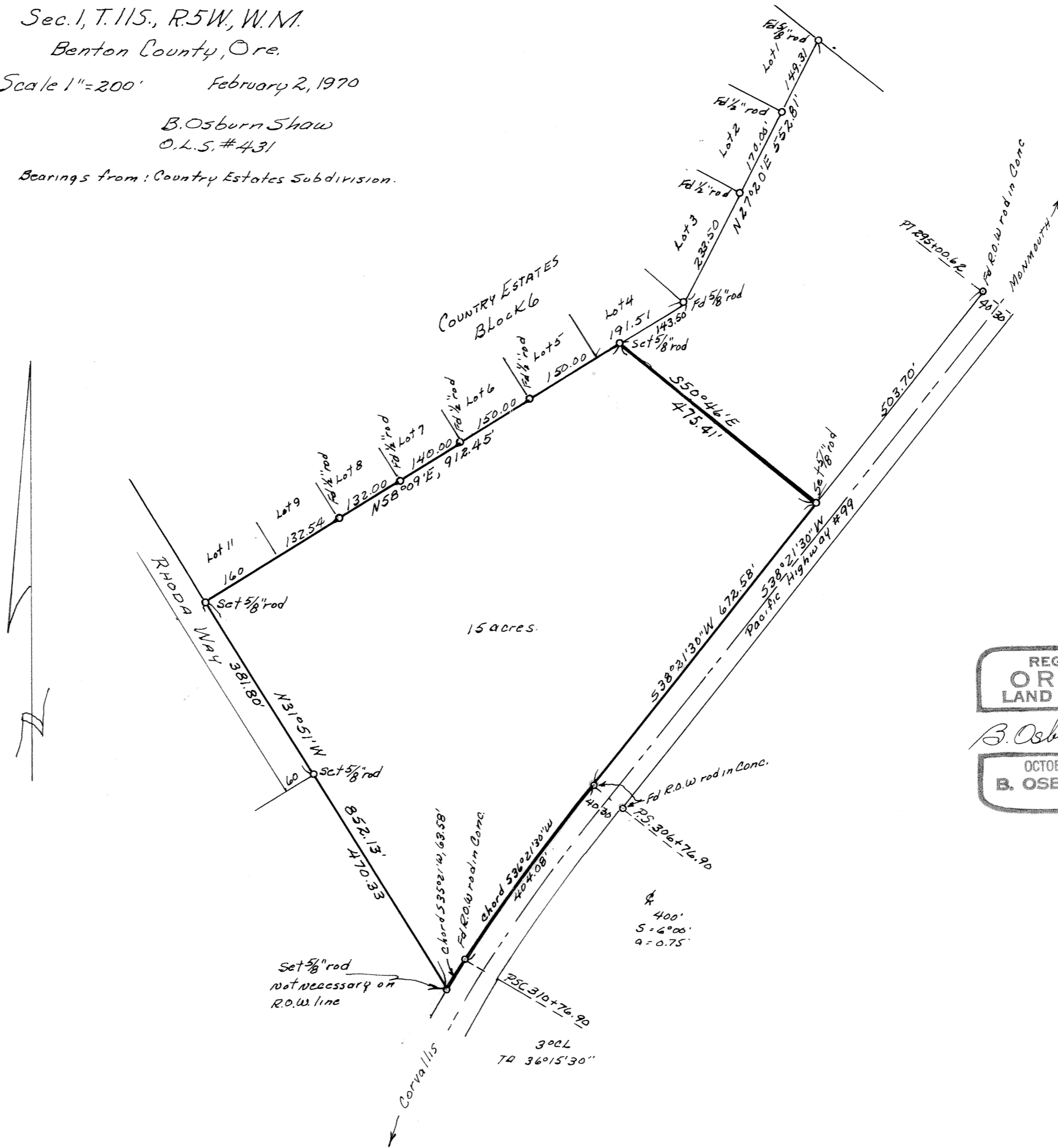
Benton County, Ore.

Scale 1"=200' February 2, 1970

B. Osburn Shaw

O.L.S. # 431

Bearings from: Country Estates Subdivision.



REGISTERED OREGON LAND SURVEYOR

B. Osburn Shaw

OCTOBER 4, 1957 B. OSBURN SHAW 431