

4957

# CITY OF MONROE

PACIFIC ADD. TO MONROE

SEC 33, T.14 S., R.5 W. W.M.

MONROE, BENTON CO., OREGON

SCALE: 1"=100'

JULY 29, 1970

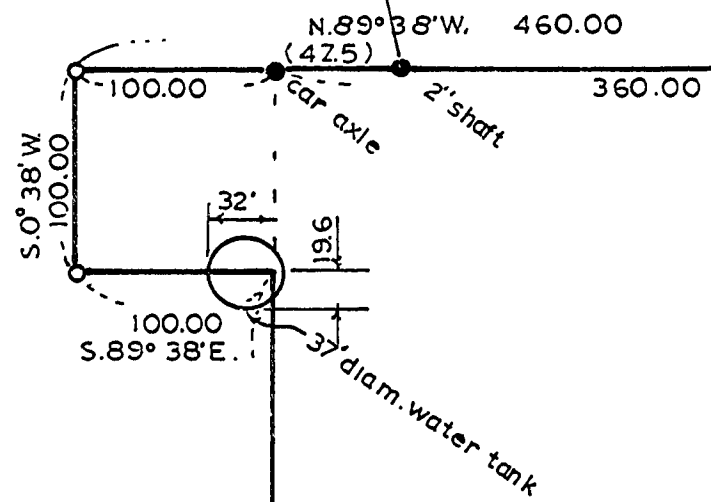
REGISTERED  
OREGON  
LAND SURVEYOR

*E. S. Castleberry*

JULY 9, 1965  
E. S. Castleberry  
684

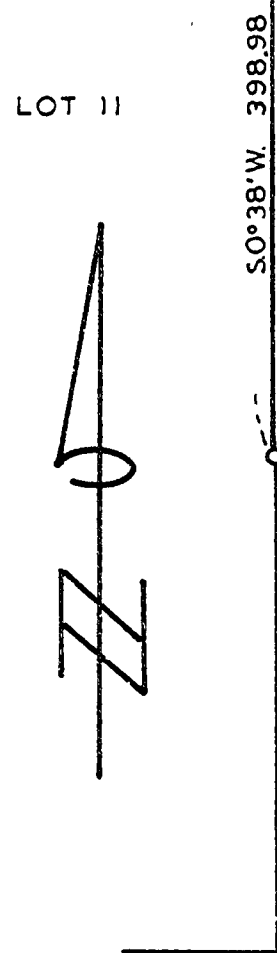
LOT 7 A  
2nd. AMENDED PACIFIC ADDITION

LOT 6



LOT 11

LOT 12



N. 0° 38' E. (BASE BEARING) 54.98 (95.4.9)

(MAIN ST.)

LOOKOUT ADDITION

(COMMERCIAL ST.)

HOWARD ADDITION

8th. ST.

- DENOTES 1/2" IRON ROD SET
- " MONUMENT FOUND

S. 89° 38' E.  
40.00

ORCHARD ST.

N. 88° 30' E.

1/2" I.R.

1/4" I.R.