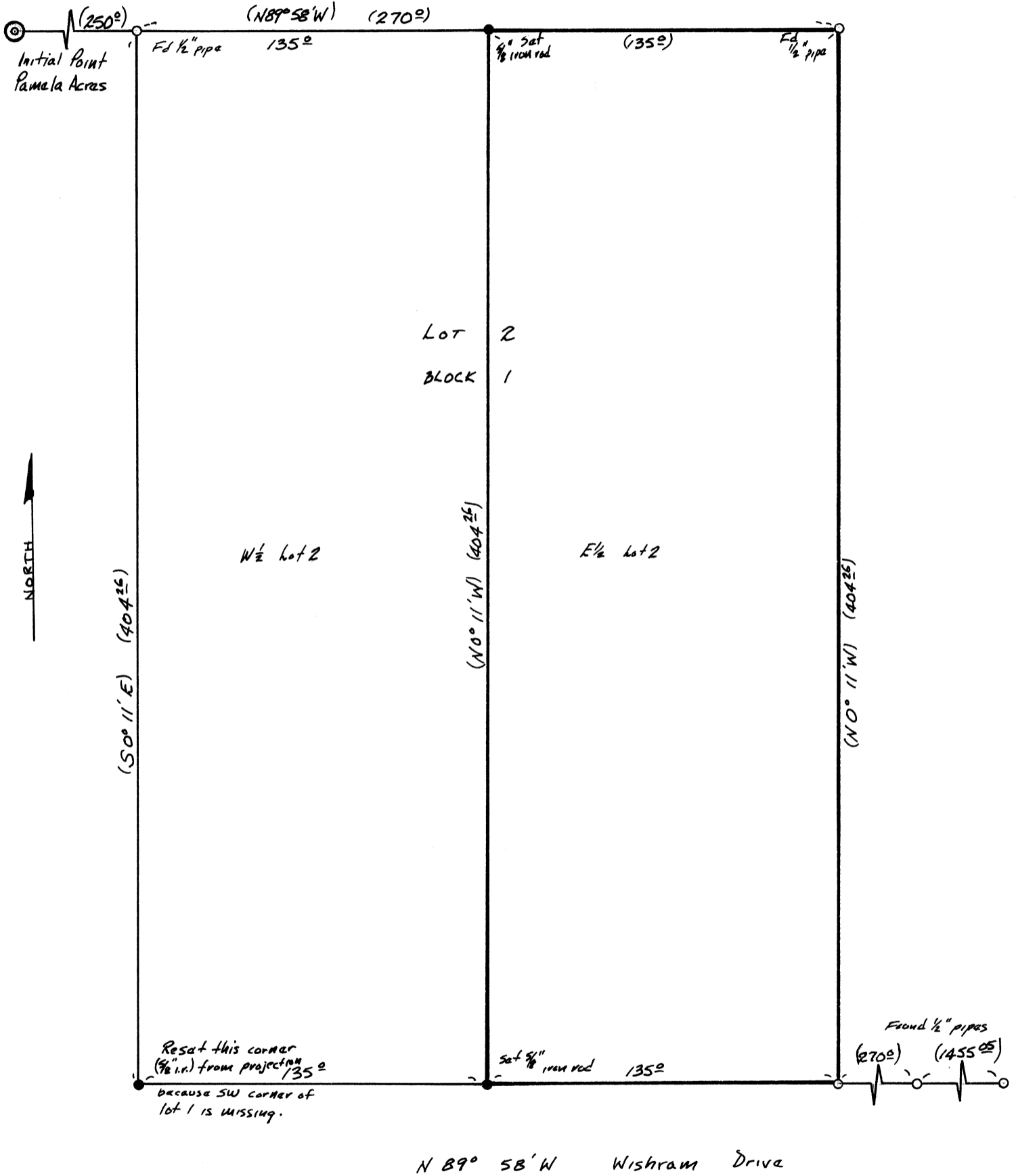


25. 5009

SURVEY: For Ronald Gillson  
E½ Lot 2, Block 1, Pamela Acres  
Sections 23 & 26, T10S, R4W, W.M.  
Benton County, Oregon  
Scale: 1 inch = 50 feet  
January 18, 1971

REGISTERED  
OREGON  
LAND SURVEYOR  
*Tom O. McCullough*  
JULY 10, 1964  
TOM O. McCULLOUGH  
650



Found alum.  
angle iron ± 59°  
south of SW corner  
of lot 2, Block 1  
Orig. 1/2" pipe missing

LOT 3 BLOCK 2

Found alum.  
angle iron ± 59°  
south of SE corner  
lot 2 Block 1 - Orig.  
1/2" pipe missing