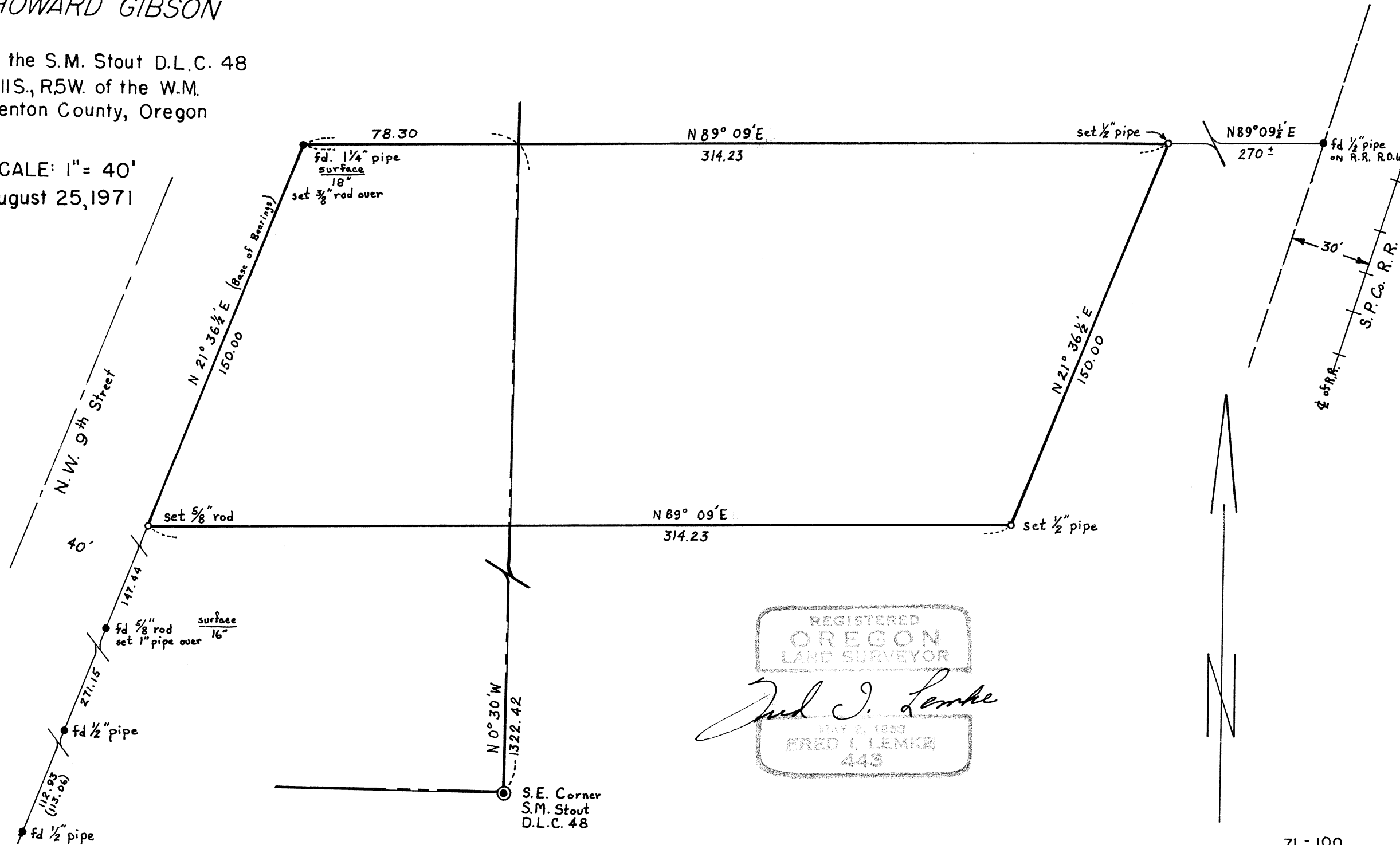


5160

Survey for
HOWARD GIBSON

In the S.M. Stout D.L.C. 48
T.11S., R.5W. of the W.M.
Benton County, Oregon

SCALE: 1" = 40'
August 25, 1971



REGISTERED
OREGON
LAND SURVEYOR

Fred J. Lemke

MAY 2, 1959
FRED J. LEMKE
443

