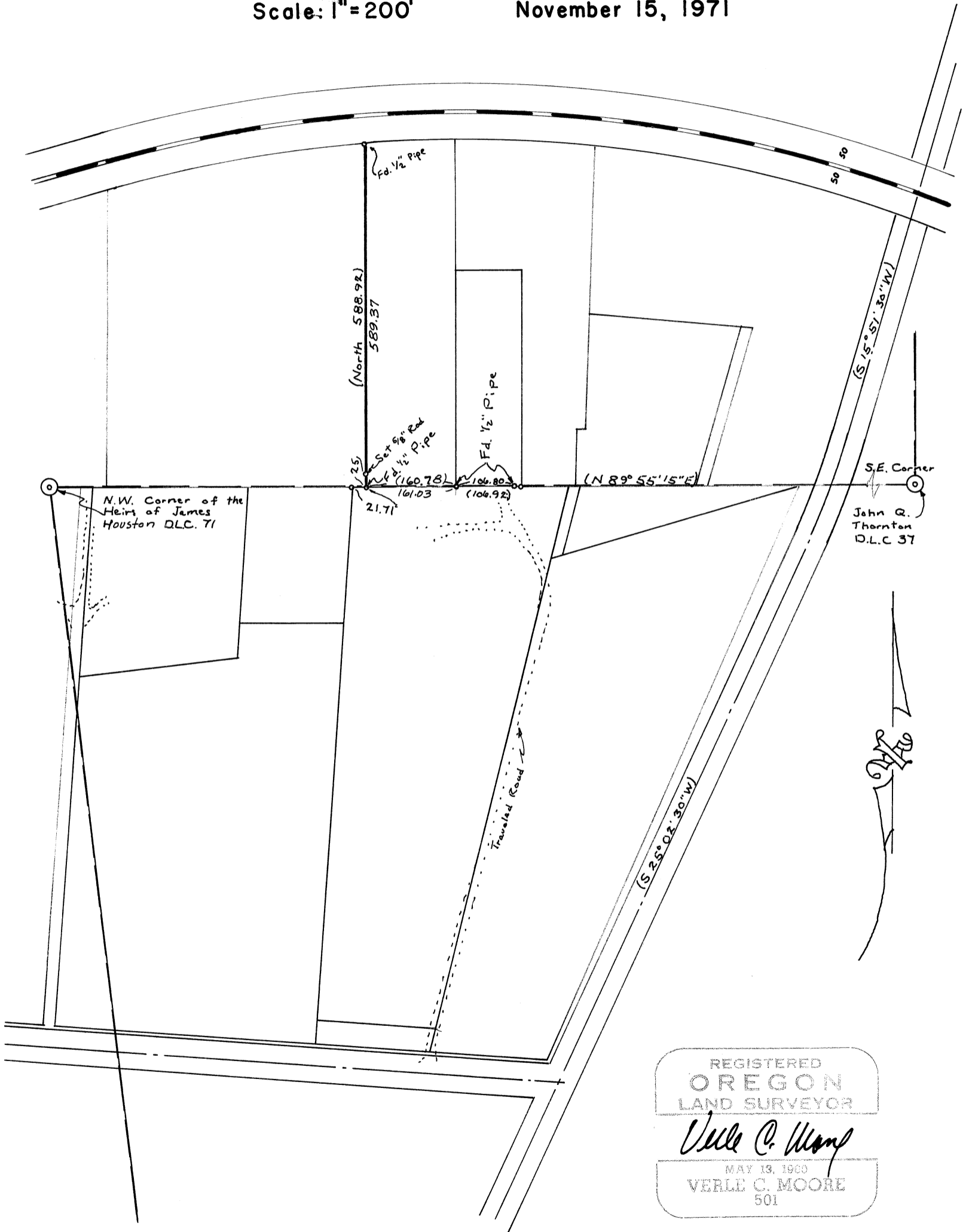


Record of Survey
 for
CLIFFORD WALKER
 in the
 NW 1/4 of Sec. 6, T.11S., R.3W. W.B.&M.
 Benton County, Oregon
 Scale: 1"=200' November 15, 1971



REGISTERED
OREGON
 LAND SURVEYOR
Verle C. Moore
 MAY 13, 1960
 VERLE C. MOORE
 501