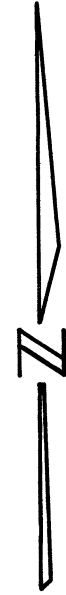


5200

ARTHUR SPENCER

SW 1/4 SECTION 25, T. 10 S., R. 4 W., W.M.
Benton County, Oregon

SCALE: 1" = 200'
FEBRUARY 21, 1972

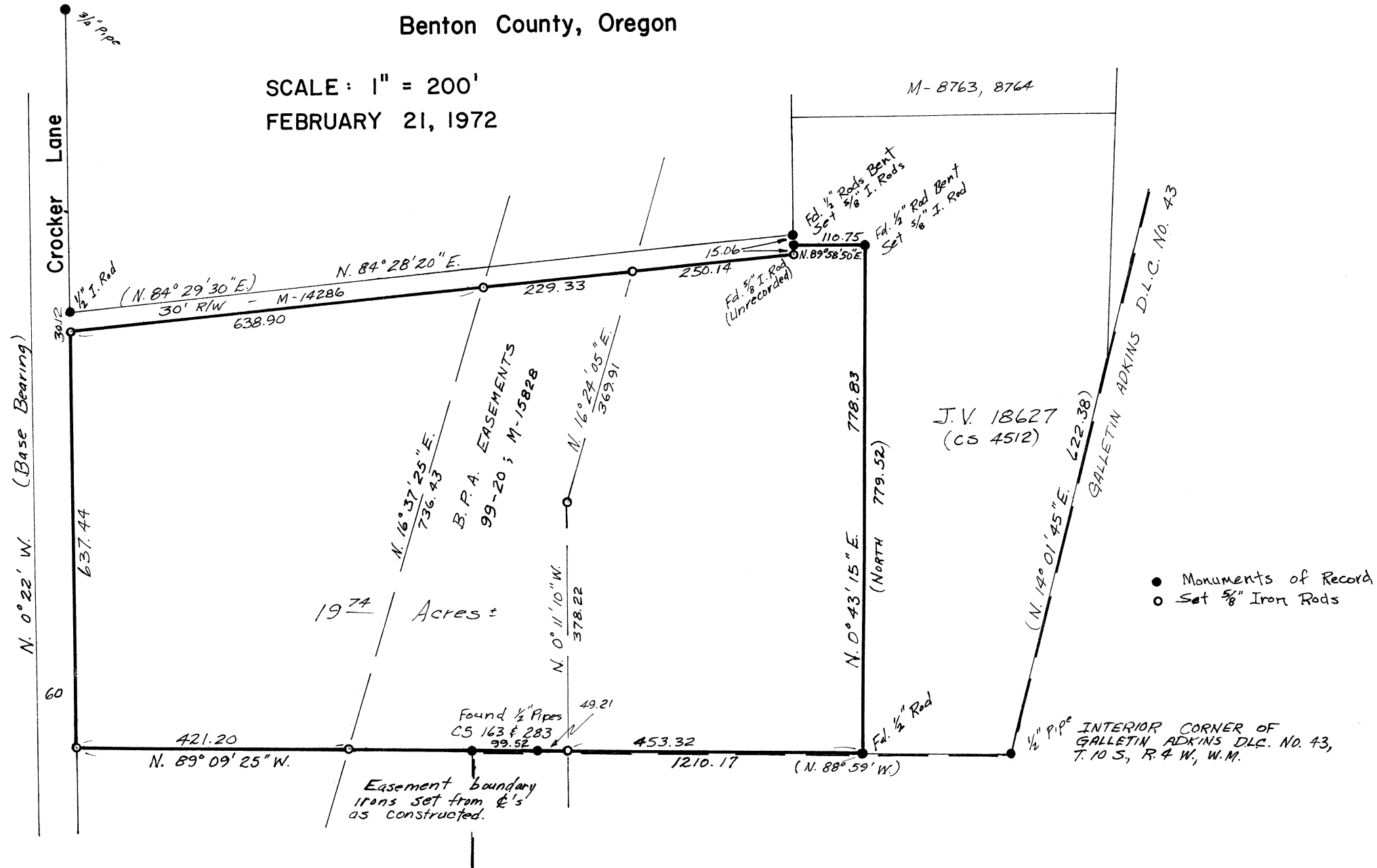


Based on CS 4512,
283 & 163

REGISTERED
PROFESSIONAL
LAND SURVEYOR

David R. Schmidt

OREGON
JULY 24, 1967
DAVID R. SCHMIDT
816



- Monuments of Record
- Set 5/8" Iron Rods