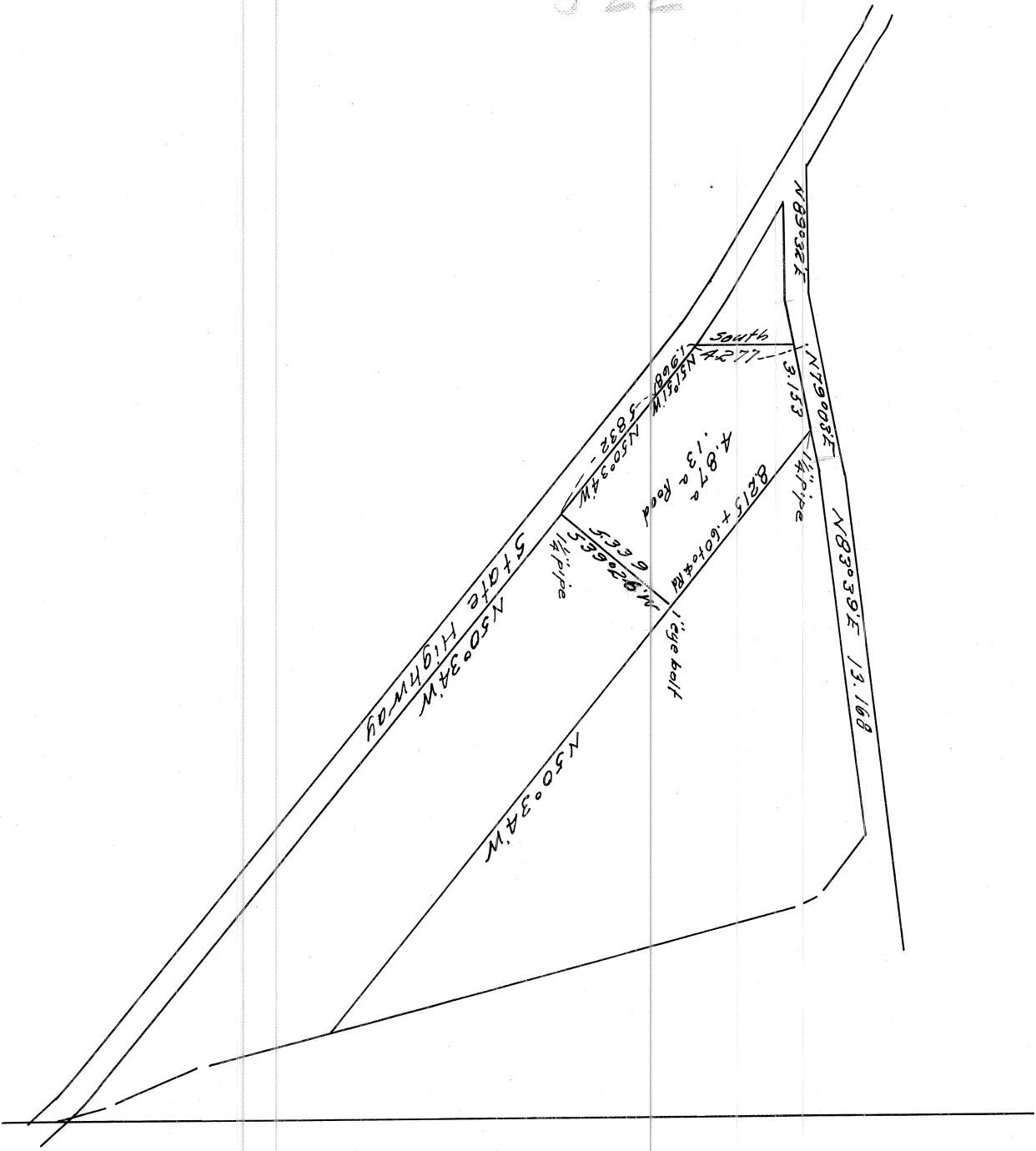


34-14-5

C.S. ~~272~~
522



12

C.S. # 242 #522

F/B 20, Pg 12-13
28-29-03
T. 14-5 60° 06'

Beg at 0 E. 1097

28/27 T. 14 S. R 5 W N. 005' of cor.

33/34 S. 89° 45' E.
correction S. 2'
2 L. Right 6° 33' 286.2 offset
326 S.

3 (S. 89° 43' E.) 35.803

+ .073

Remk. Striking S. of cor. 301

Set 3/4" galv. pipe

Remk. Ash 24" N. 67° E. 4.77 std.

S. 89° 45' E.

correction S. 3'

4 (S. 89° 42' E.) 8.004

+ 2.028

N. 292

Set 3/4" pipe W. of fence .158
Cor. of post 2.18 S.E.5 L. Left 2° 23' 12.467 offset
518 N.

6 19.262

+ .188

Striking N. of cor. 255

Remk. Set 3/4" galv. pipe

C.S. Pine 30" N. 42° E. 1.50 std.

W. Fir 18" S. 9° E. .567

Oak 12" S. 82° W. .63 "

W. fir 26" N. 12° W. .651

Back to A 4 + ore 2.028

7 S. 0° 15' W. 5.932

Correction E. 15'

For Alice Tally C.S. # 223

June 8, 1915 G.A. Grandall

J.M. Faris Virgil Kay

2862	2862	offsets
74397	70411	.005 N.
25758	2862	.326 S.
2575	286	.321 S.
85	114	.301 N.
11	2	.020 S.
2	3264	.00050 = 2'
28431	39.812	10200000
		199060
		9400

1093
2843
35.803
39.7394
.073
39.812

39.837 00095 = 3'

0380000

358533

214670

12.467 offsets

9514 .301 S.

49868 518 N.

1246 .217 N.

623 .255 S.

112 .038 S.

51849

9.959

7.931

2.028

4139.837

9.959

29.878

8.004

.073

7.931

12.456

19.262

39.649

.188

13

8

9

10

11

12

13

14

15

16

17

18

19

20

Δ

Δ

21

22

23

24

25

10.004 -0.69E.

5.513

8.379

E. 128 for line

7.576

3.679

.954

3.473

13.171

6.394

5.035

12.905

2.060

1.771

2.341

4.902

3.993

1.874

.726

9.249

7.994

7.982

4.408

-1.356

E. 338

+797 to head of nail in forked balm

S. 8° 11' E.

13.259

086

13.171

S. 14° 26' E. 455

Open a bolt N. 10° 35' W. 418

4112

1.771

2341

N. 24° 05' W. 5637

389° 51' E. 30.027 to Rest. set head oak stake 5" X 5" X 30"

Oak 36" N. 57° E. 40 down chs.

Ash 12" N. 76° E. chs.

Oak 12" N. 45° W. 45 "

4408

2221

4408

881

88

.05385

7576
128
7.804

30.12
424
120.18
6.02
1.20
127.70

30.120
00424 = 15'
40.095
170000
160380
262.00
801.90
1601.00

16.228
424
64.912
3.245
6.48
068806

31.743
26.017
5.726

00102E 4'
30.027
30.027
197300
180162
171380

39.57
29.978

39.81
29.958

40.011
10.000
30.010

292

5932

10.004

5.513

8.379

30.120

726

9.249

40.095

7.994

7.982

4.407

60.478

14.097

9.920

22.017

4112

4902

3993

13.007

Continued on Page 28

28	Alice Tally		14-5
	Continued from page 13		
	#522		
26		6.098	
27	L Right 1°8'	5.052	offset 100 W
28		7.139	
29		1.584	to line
	Set cor. East	550	
	Set 1/2" P.P. in glass		
30	N 89° 29' W	5.555	iron x
31	correction	2.002	W. Long Tam
32	N. 16° 30' W.	3.526	50-1/2' long
33	N. 56° 58' W.	2.895	38-1/2'
34	S. 62° 11' W.	3.537	1.0-50
35	N. 63° 41' W.	1.427	32
36		2.110	-29
37	S. 85° 59' W.	1.167	10-30
38		5.119	30 water
39	N. 52° 33' W.	1.763	28 corr.
40	N. 55° 51' W. 3°30'	4.124	-20
41		2.388	-10
42		5.221	-10
43	N. 66° 25' W.	4.506	-10
44	N. 47° 57' W.	6.804	-10
45	N. 58° 35' W.	5.211	-10
	Pipe at 1026 AB	1.190	-06
47	N. 0° 28' E.	1.829	
	correction W. 22'		

5052	offsets	30.027
8791	.054 W.	29.858
	100 W.	.169
5052	.154 W.	.394
4546	548 E.	.225
353	394 E.	
40		
09991	00490 = 7'	
	80.394	394000
6103		321576
5520		724240
546		723546
		40.2
		.2250
		2010
		2400
		2010
		3950
		3218
		282
		.550
		6.098
		5.555
		1.356
		2.002
		4.742
		8.107
		5.051
		7.139
		1.584
		18.516

886 to can Long Tam
Striking Nat. cor. 224
1896 to cor.
797
1206
6940
00700 = 24
028
00803 = 18
024
00762 = 28
092

stough
river little narrow
50 can. stough 30 W. W.
opposite end of stough on N. side, Island 100' long
about 50' wide
River 3.00 wide for 500

N. 45° E. To Point
end of stough on S. 76
& about 76 on S. from Δ 42 + 120 dist. at land N. 40
about 70 from Δ 42 to water. Water on R/W

stough 20 wide

offsets	00635 = 22'
.159 E.	189
.279 W.	1200
120 W.	1134
	660
	561
	930

1.829
.049
1.780
.178
1.800



29

48

17070

7.048

Striking E. of 33³⁴ cor. .279 1" pipe

49 N 0° 19' E.

5.744 w. 285

50

correction W. 4'

8.015

+ .223 to gun bbl.
+ .678 to cen. road
W. 294

51

6.553

-.027

.302

Striking E. of cor.

From 1/2" pipe on S. of road. Most E. N.E. cor.

Ths. 52 N. 14° 03' W.

2.264 3/4" pipe

53 N. 23° 58' W.

3.719 1" pipe

12 N. 14° 18' W.

23.180 1/2" pipe

Back to John Carpenter's S.W. cor.

at Δ 18 page 13

Ths. N 9° 57' E.

4.631 3/4" galv. pipe

N. 12° 53' W.

2.434 3/4" galv. pipe

N. 24° 45' W.

1.922 1/2" galv. pipe

N 37° 59' W.

3.335 3/4" galv. pipe

N 89° 43' W.

.865 3/4" galv. pipe

on sec. line

.302 W.
.279 E. 20113 = 1'20.237
- .023
20.237
2.7630
20.237
739.30
607.21455
223
67818.49
9.79
1.780
17.070
18.850
0.48
18.89818.898
98
17.9185.744
0.48
5.696
8.015
13.711
6.55313.711
678
14.38920.264
0.027
20.237
4.654
15.790
40.141
14.389
25.752

on sec. line

23.180
954
3.473
27.607
N. 15° 32' W.
N. 26° 25' W.24° 33'
12
454.631
3.194
1.437
10 9'
12
9.57NOTE 3.335
1.2
2.334