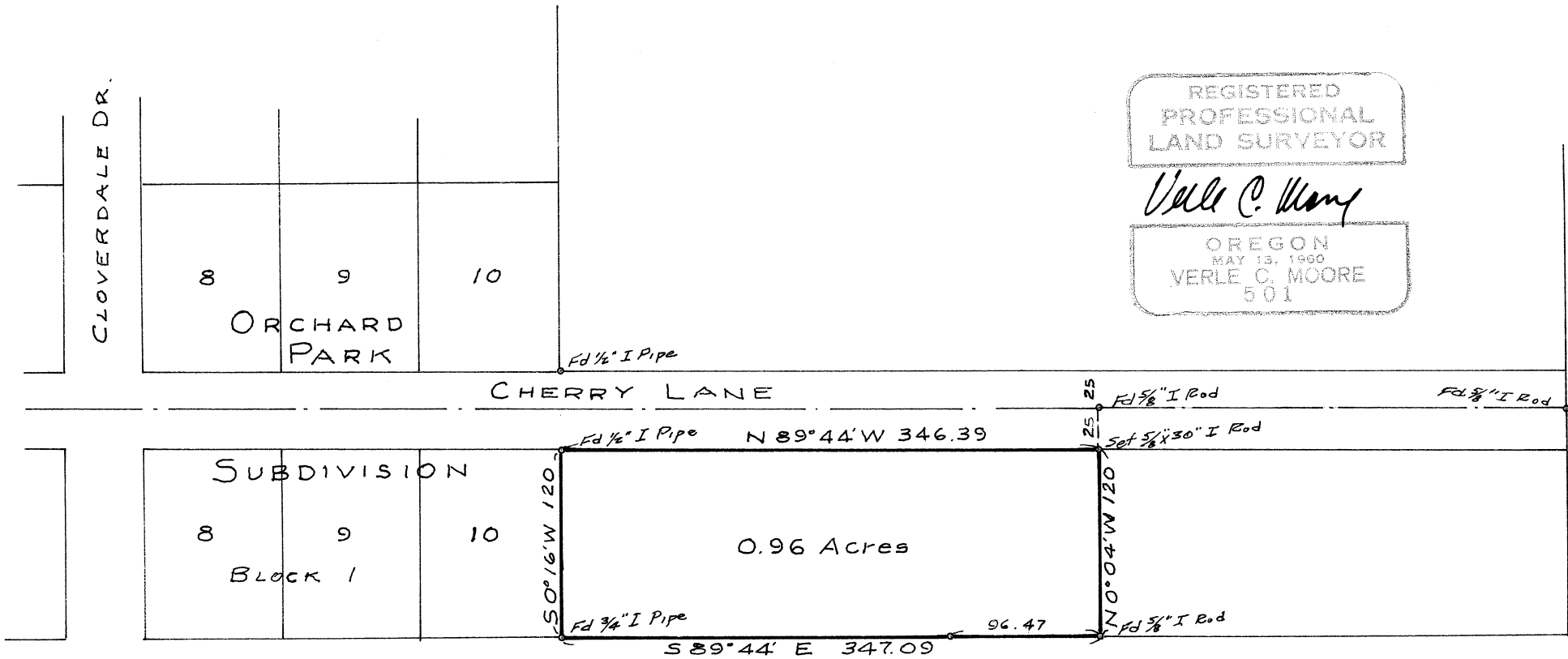


5380

Record of Survey
for
TOM HUGHSON
in the
S. E. 1/4 Section 31, T.10S., R.3W., W.B. & M.
Benton County, Oregon
Scale: 1" = 100' September 29, 1972



REGISTERED
PROFESSIONAL
LAND SURVEYOR
Verle C. Moore
OREGON
MAY 19, 1960
VERLE C. MOORE
501