

5405

ORA LOUISE WICKS

SE 1/4 SEC 6, T.12 S., R.5 W., W.M. & DLC#42

BENTON COUNTY, ORE.

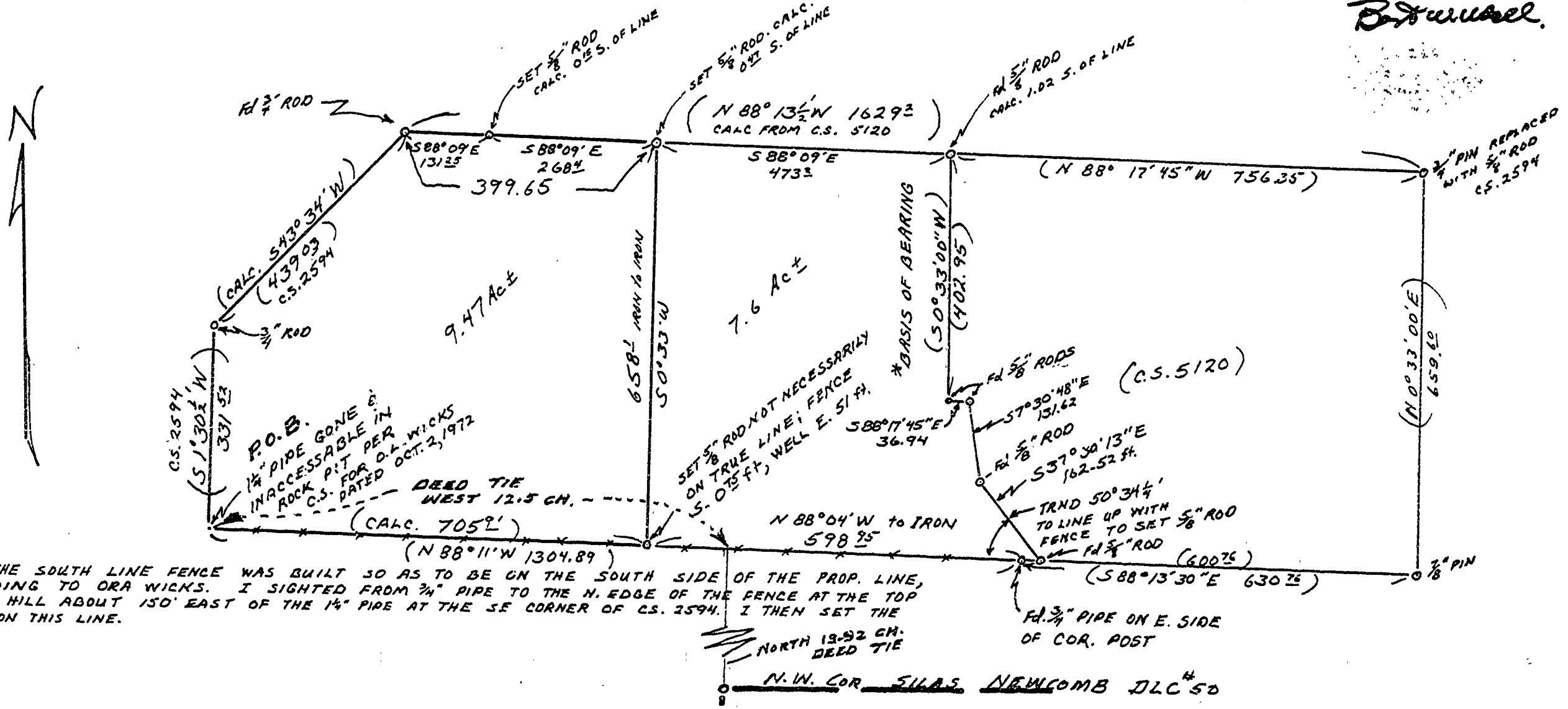
SCALE: 1" = 200'

FEB. 15, 1973

BASED ON CS 2594 & 5120

BERT W. UDELL RPE# 2301
BY ARNOLD BRUBAKER L.S.T.# 5

B. Uddell



NOTE: THE SOUTH LINE FENCE WAS BUILT SO AS TO BE ON THE SOUTH SIDE OF THE PROP. LINE, ACCORDING TO ORA WICKS. I SIGHTED FROM 3/4" PIPE TO THE N. EDGE OF THE FENCE AT THE TOP OF THE HILL ABOUT 150' EAST OF THE 1/4" PIPE AT THE SE CORNER OF CS. 2594. I THEN SET THE 5/8" ROD ON THIS LINE.

NORTH 13.92 CH. DEED TIE
N.W. COR. SILAS NEWCOMB DLC# 50