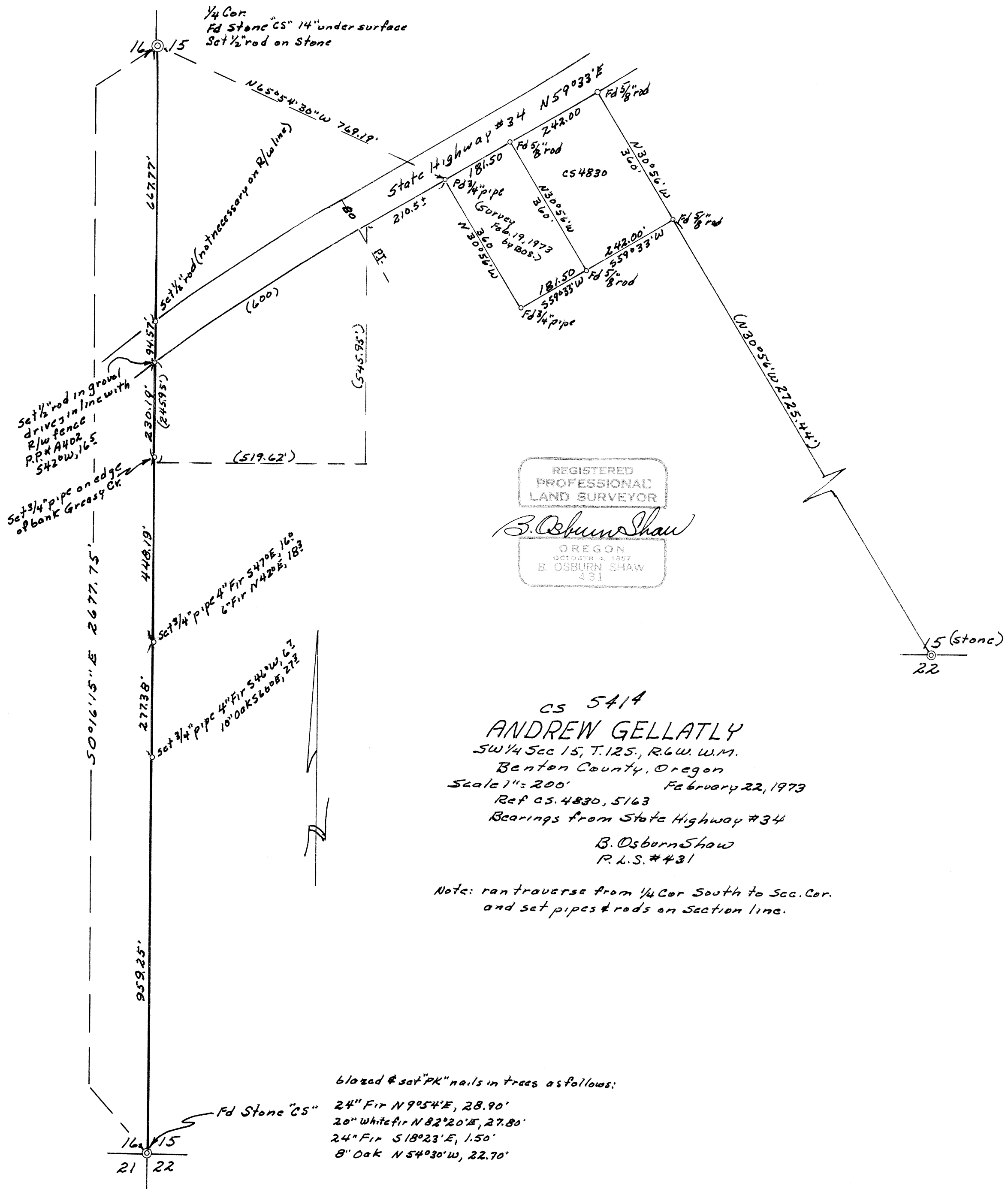


5414



REGISTERED
PROFESSIONAL
LAND SURVEYOR

B. Osburn Shaw

OREGON
OCTOBER 4, 1957
B. OSBURN SHAW
431

CS 5414
ANDREW GELLATLY
SW 1/4 Sec 15, T. 12S., R. 6W. W.M.
Benton County, Oregon
Scale 1" = 200' February 22, 1973
Ref CS. 4830, 5163
Bearings from State Highway #34

B. Osburn Shaw
R.L.S. #431

Note: ran traverse from 1/4 Cor South to Sec. Cor.
and set pipes & rods on Section line.

blazed & set "PK" nails in trees as follows:

- 24" Fir N 9°54'E, 28.90'
- 20" White fir N 82°20'E, 27.80'
- 24" Fir S 18°23'E, 1.50'
- 8" Oak N 54°30'W, 22.70'

5414

5414