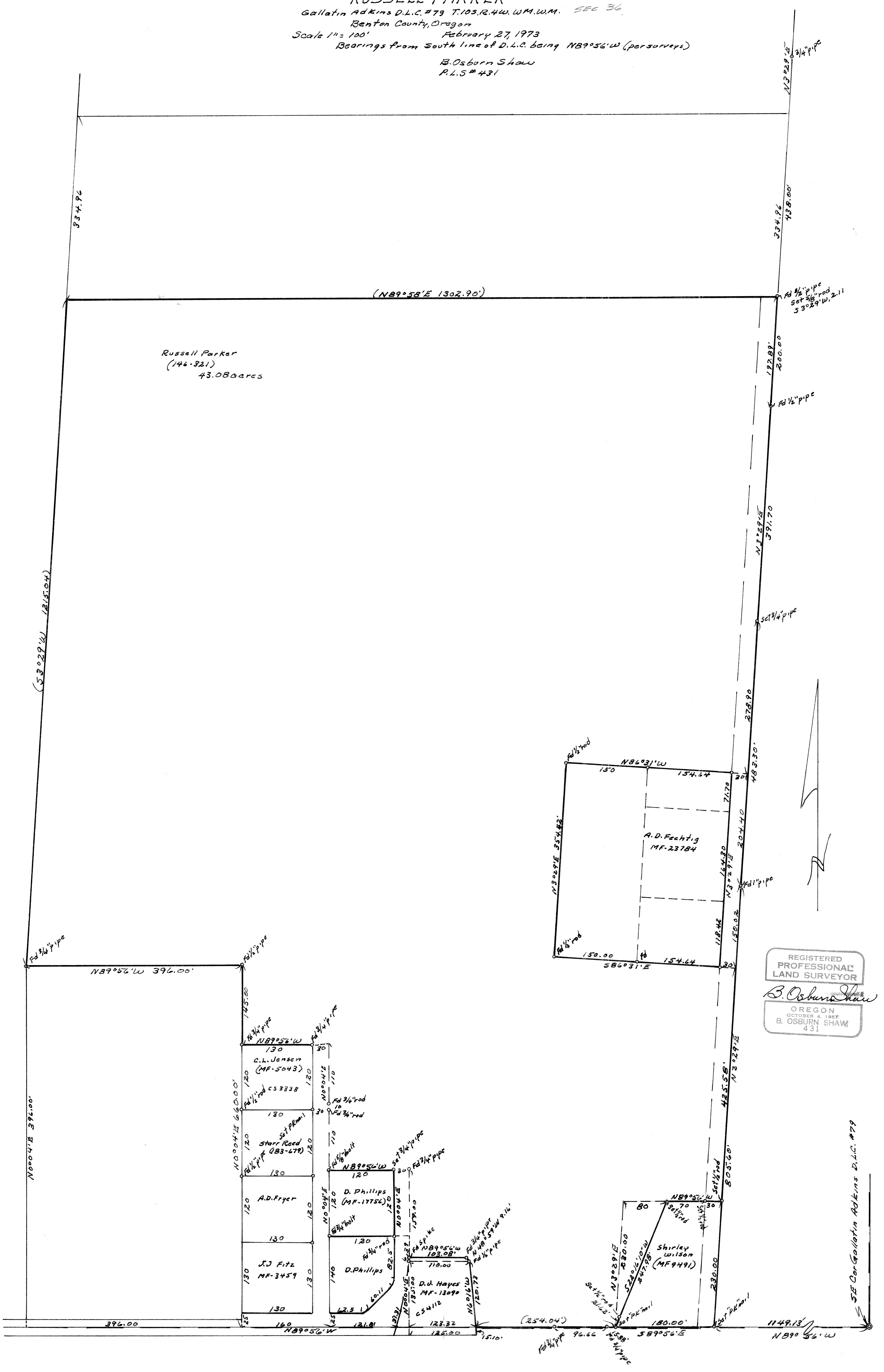


CS 5423
RUSSELL PARKER
 Gallatin Adkins D.L.C. #79 T.10S.R.4W.WM.W.M. SEC 36
 Benton County, Oregon
 Scale 1" = 100' February 27, 1973
 Bearings from South line of D.L.C. being NB9°56'W (per surveyors)
 B. Osburn Shaw
 P.L.S. #431



REGISTERED
 PROFESSIONAL
 LAND SURVEYOR
 B. Osburn Shaw
 OREGON
 OCTOBER 4, 1957
 B. OSBURN SHAW
 431

SE Cor. Gallatin Adkins D.L.C. #79