

CS 5435

CHARLES HOLT

SE 1/4 SECTION 22, T.13 S., R. 6 W., W.M.
Benton County, Oregon

SCALE: 1" = 100'

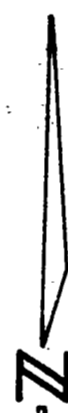
MARCH 30, 1973

At PI 1 set a 1/2" rod from which I set
1/2" rods 20.23 ft. on angle split of 81° 20'

Set spikes base of 2 firs:
25" fir N. 68° 34' 20" E. 69.50 ft. to spike
20" fir S. 40° 24' 40" E. 59.94 ft. to spike

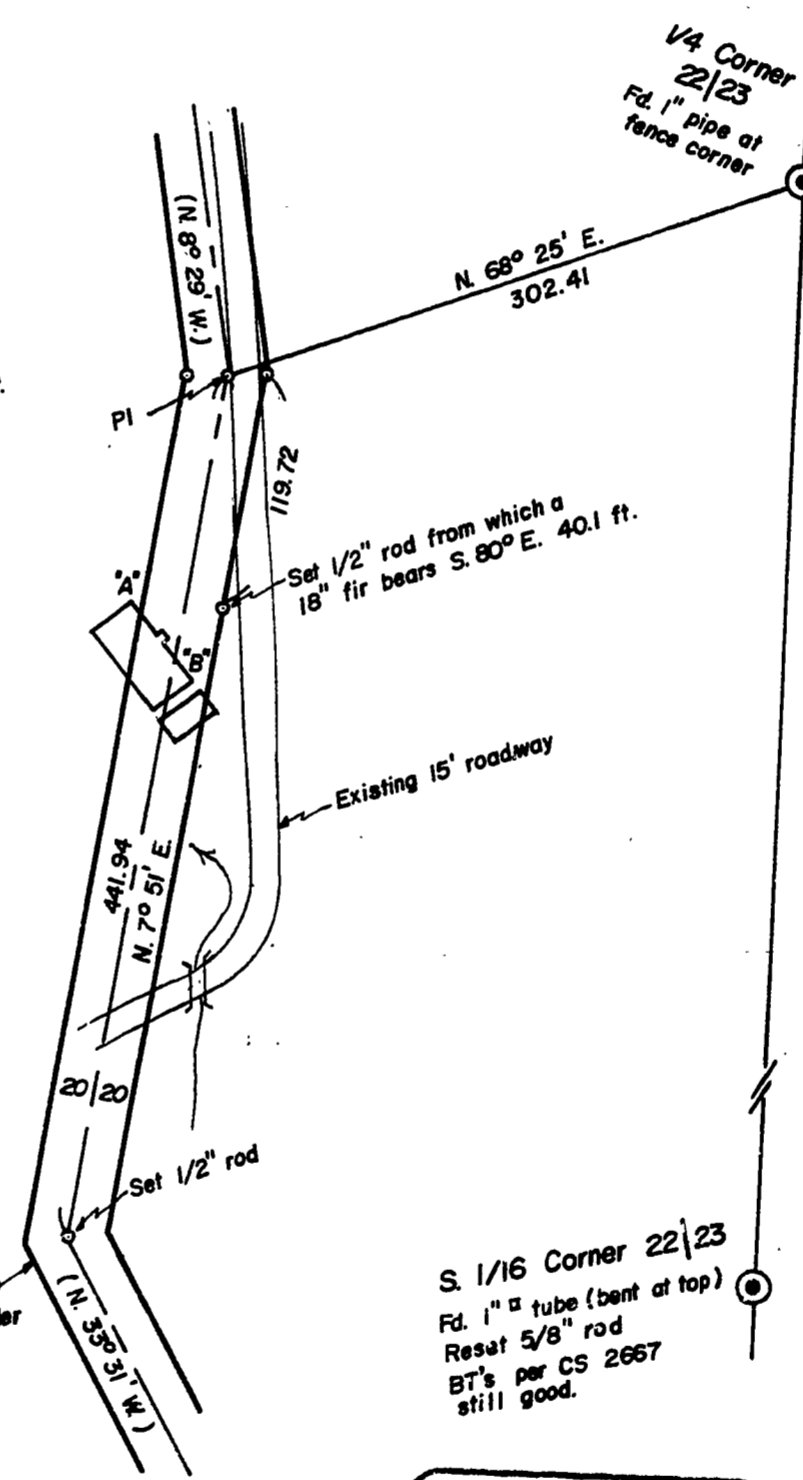
Corner "A" on house bears S. 20° 47' W. 123.8 ft.

Corner "B" on house bears S. 5° 11' W. 155.0 ft.



BASED ON CS 2667

County Road per Court Order
(Old CR 380)



S. 1/16 Corner 22|23
Fd. 1" tube (bent at top)
Reset 5/8" rod
BT's per CS 2667
still good.

REGISTERED
PROFESSIONAL
LAND SURVEYOR

Kenneth M. Wightman

OREGON
JULY 17, 1970
KENNETH M. WIGHTMAN II
942

TIMBERLAND SERVICES, INC.
P.O. Box 668 - Albany, Ore. 97321
Phone: 928-3539

NEEL FRAME 072

